

**CD38 Polyclonal Antibody**  
Catalog # AP73575**Specification****CD38 Polyclonal Antibody - Product Information**

Application	WB
Primary Accession	<a href="#">P28907</a>
Reactivity	Human
Host	Rabbit
Clonality	Polyclonal

**CD38 Polyclonal Antibody - Additional Information****Gene ID** 952**Other Names**

CD38; ADP-ribosyl cyclase 1; Cyclic ADP-ribose hydrolase 1; cADPr hydrolase 1; T10; CD38

**Dilution**

WB~~Western Blot: 1/500 - 1/2000. IHC-p: 1/100-1/300. ELISA: 1/20000. Not yet tested in other applications.

**Format**

Liquid in PBS containing 50% glycerol, 0.5% BSA and 0.09% (W/V) sodium azide.

**Storage Conditions**

-20°C

**CD38 Polyclonal Antibody - Protein Information****Name** CD38**Function**

Synthesizes cyclic ADP-ribose (cADPR), a second messenger for glucose-induced insulin secretion (PubMed: [7961800](http://www.uniprot.org/citations/7961800), PubMed: [8253715](http://www.uniprot.org/citations/8253715)). Synthesizes the Ca(2+) mobilizer nicotinate-adenine dinucleotide phosphate, NAADP(+), from 2'-phospho-cADPR and nicotinic acid, as well as from NADP(+) and nicotinic acid. At both pH 5.0 and pH 7.4 preferentially transforms 2'-phospho-cADPR into NAADP(+), while preferentially cleaving NADP(+) to cADPR and ADPRP rather than into NADDP(+) (PubMed: [16690024](http://www.uniprot.org/citations/16690024)). Has cADPR hydrolase activity (PubMed: [7961800](http://www.uniprot.org/citations/7961800), PubMed: [8253715](http://www.uniprot.org/citations/8253715)).

**Cellular Location**

Cell surface. Membrane; Single-pass type II membrane protein

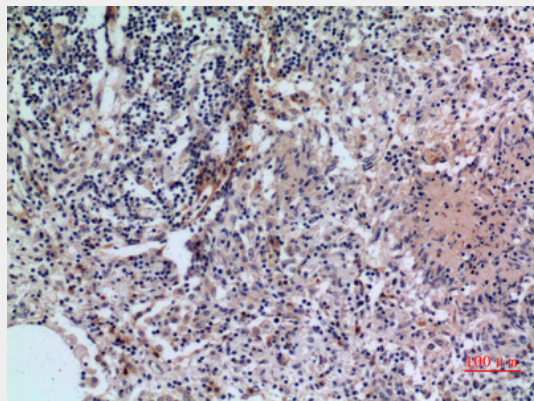
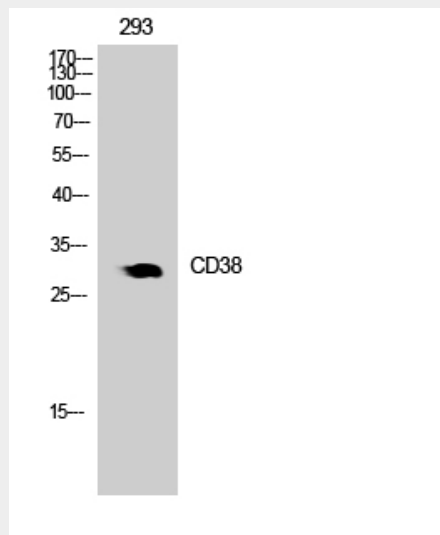
**Tissue Location**

Expressed at high levels in pancreas, liver, kidney, brain, testis, ovary, placenta, malignant lymphoma and neuroblastoma.

**CD38 Polyclonal Antibody - Protocols**

Provided below are standard protocols that you may find useful for product applications.

- [Western Blot](#)
- [Blocking Peptides](#)
- [Dot Blot](#)
- [Immunohistochemistry](#)
- [Immunofluorescence](#)
- [Immunoprecipitation](#)
- [Flow Cytometry](#)
- [Cell Culture](#)

**CD38 Polyclonal Antibody - Images****CD38 Polyclonal Antibody - Background**

Synthesizes the second messengers cyclic ADP-ribose and nicotinate-adenine dinucleotide phosphate, the former a second messenger for glucose-induced insulin secretion. Also has cADPr hydrolase activity. Also moonlights as a receptor in cells of the immune system.