

**Laminin  $\gamma$ -2 Polyclonal Antibody**  
Catalog # AP73562**Specification****Laminin  $\gamma$ -2 Polyclonal Antibody - Product Information**

Application	WB
Primary Accession	<a href="#">Q13753</a>
Reactivity	Human, Rat
Host	Rabbit
Clonality	Polyclonal

**Laminin  $\gamma$ -2 Polyclonal Antibody - Additional Information****Gene ID** 3918**Other Names**

LAMC2; LAMB2T; LAMNB2; Laminin subunit gamma-2; Cell-scattering factor 140 kDa subunit; CSF 140 kDa subunit; Epiligrin subunit gamma; Kalinin subunit gamma; Kalinin/nicein/epiligrin 100 kDa subunit; Ladsin 140 kDa subunit; Laminin B2t chain; Laminin-5 subunit gamma; Large adhesive scatter factor 140 kDa subunit; Nicein subunit gamma

**Dilution**

WB~~Western Blot: 1/500 - 1/2000. IHC-p: 1/100-1/300. ELISA: 1/20000. Not yet tested in other applications.

**Format**

Liquid in PBS containing 50% glycerol, 0.5% BSA and 0.09% (W/V) sodium azide.

**Storage Conditions**

-20°C

**Laminin  $\gamma$ -2 Polyclonal Antibody - Protein Information****Name** LAMC2**Synonyms** LAMB2T, LAMNB2**Function**

Binding to cells via a high affinity receptor, laminin is thought to mediate the attachment, migration and organization of cells into tissues during embryonic development by interacting with other extracellular matrix components. Ladsin exerts cell-scattering activity toward a wide variety of cells, including epithelial, endothelial, and fibroblastic cells.

**Cellular Location**

Secreted, extracellular space, extracellular matrix, basement membrane. Note=Major component

**Tissue Location**

The large variant is expressed only in specific epithelial cells of embryonic and neonatal tissues. In

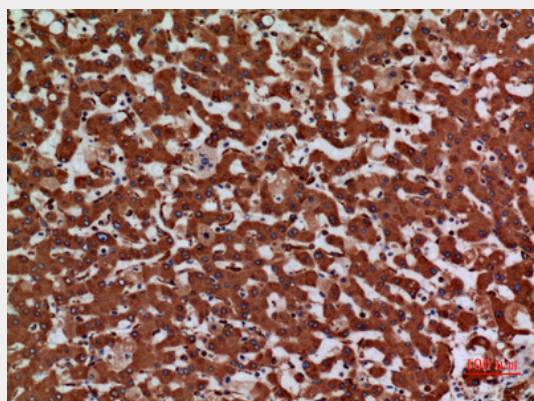
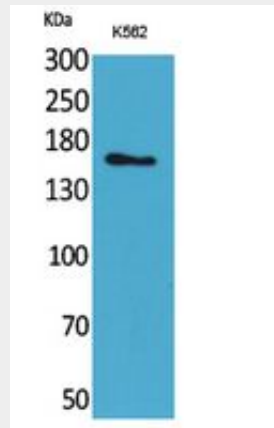
17-week old embryo the small variant is found in cerebral cortex, lung, and distal tubes of kidney, but not in epithelia except for distal tubuli

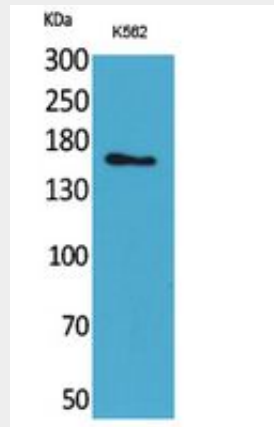
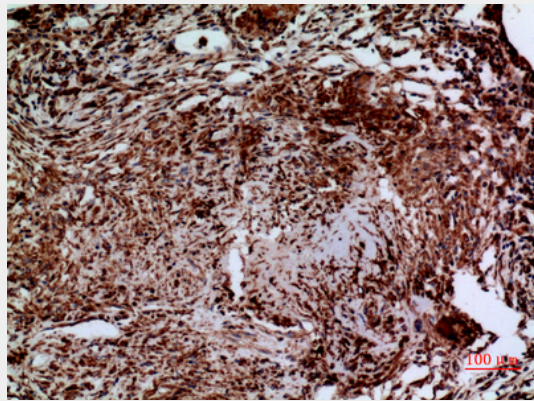
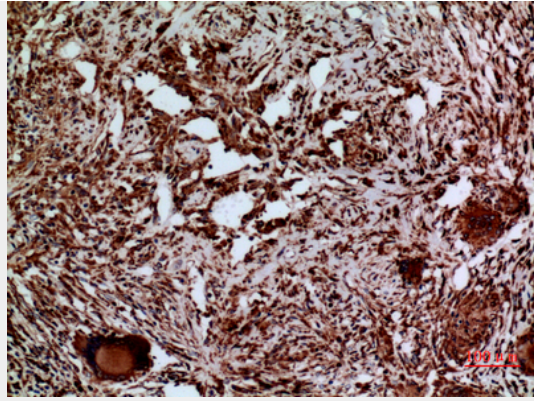
### Laminin $\gamma$ -2 Polyclonal Antibody - Protocols

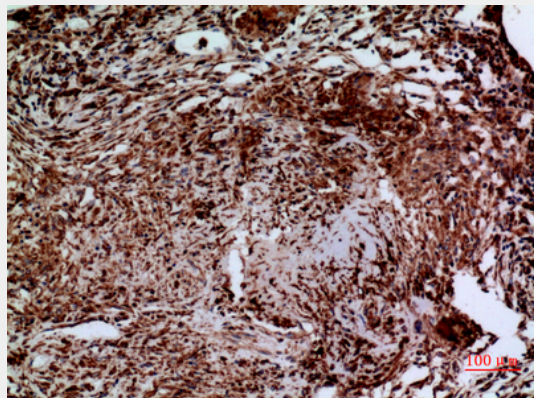
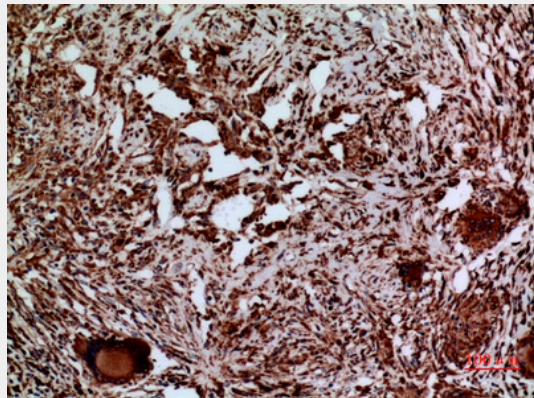
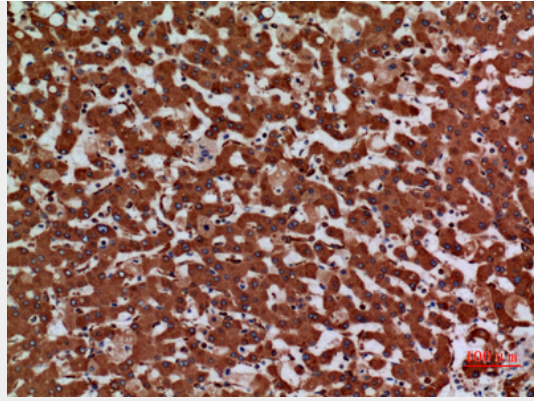
Provided below are standard protocols that you may find useful for product applications.

- [Western Blot](#)
- [Blocking Peptides](#)
- [Dot Blot](#)
- [Immunohistochemistry](#)
- [Immunofluorescence](#)
- [Immunoprecipitation](#)
- [Flow Cytometry](#)
- [Cell Culture](#)

### Laminin $\gamma$ -2 Polyclonal Antibody - Images







### **Laminin $\gamma$ -2 Polyclonal Antibody - Background**

Binding to cells via a high affinity receptor, laminin is thought to mediate the attachment, migration and organization of cells into tissues during embryonic development by interacting with other extracellular matrix components. Ladsin exerts cell- scattering activity toward a wide variety of cells, including epithelial, endothelial, and fibroblastic cells.