

**Apaf-1 Polyclonal Antibody**  
Catalog # AP73561**Specification**

---

**Apaf-1 Polyclonal Antibody - Product Information**

Application	WB
Primary Accession	<a href="#">O14727</a>
Reactivity	Human, Mouse, Rat
Host	Rabbit
Clonality	Polyclonal

**Apaf-1 Polyclonal Antibody - Additional Information****Gene ID** 317**Other Names**

APAF1; KIAA0413; Apoptotic protease-activating factor 1; APAF-1

**Dilution**

WB~~Western Blot: 1/500 - 1/2000. IHC-p: 1/100-1/300. ELISA: 1/20000. Not yet tested in other applications.

**Format**

Liquid in PBS containing 50% glycerol, 0.5% BSA and 0.09% (W/V) sodium azide.

**Storage Conditions**

-20°C

**Apaf-1 Polyclonal Antibody - Protein Information****Name** APAF1 ([HGNC:576](#))**Synonyms** KIAA0413**Function**

Oligomeric Apaf-1 mediates the cytochrome c-dependent autocatalytic activation of pro-caspase-9 (Apaf-3), leading to the activation of caspase-3 and apoptosis. This activation requires ATP. Isoform 6 is less effective in inducing apoptosis.

**Cellular Location**

Cytoplasm.

**Tissue Location**

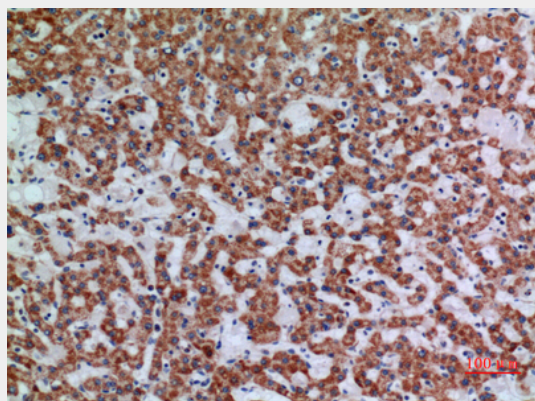
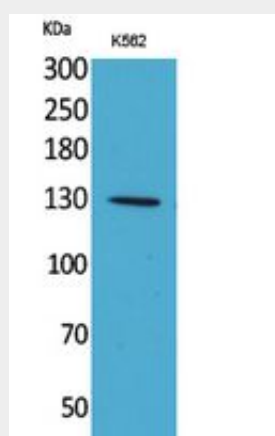
Ubiquitous. Highest levels of expression in adult spleen and peripheral blood leukocytes, and in fetal brain, kidney and lung. Isoform 1 is expressed in heart, kidney and liver

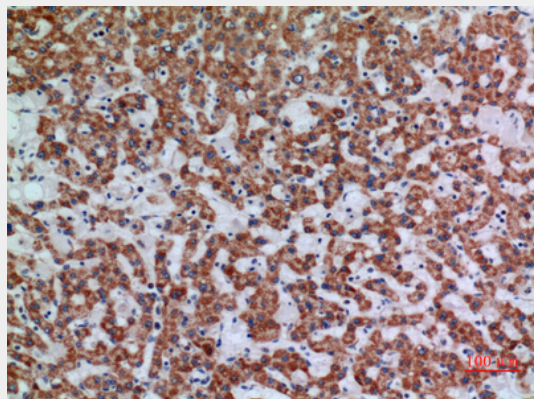
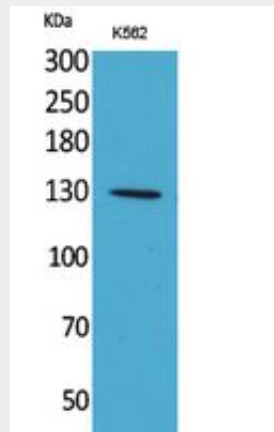
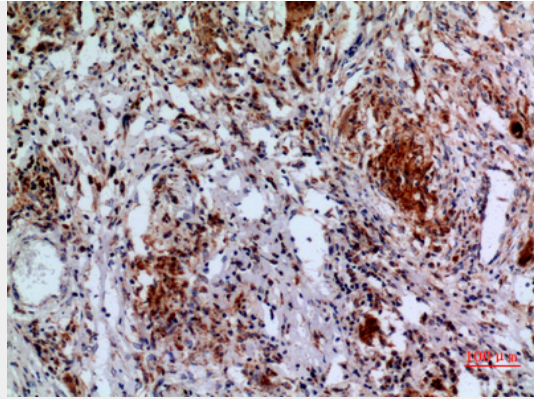
## Apaf-1 Polyclonal Antibody - Protocols

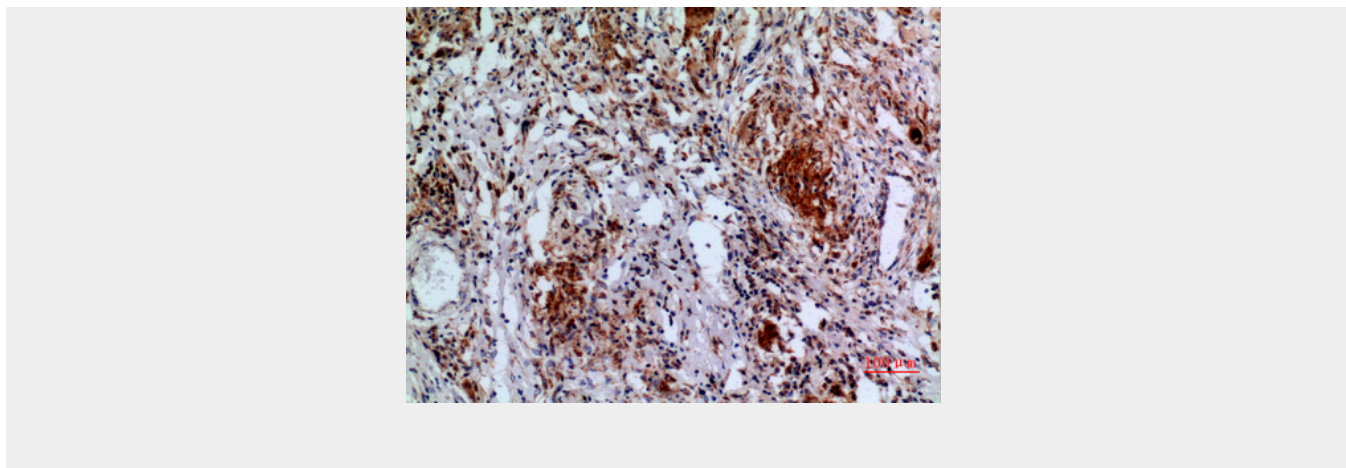
Provided below are standard protocols that you may find useful for product applications.

- [Western Blot](#)
- [Blocking Peptides](#)
- [Dot Blot](#)
- [Immunohistochemistry](#)
- [Immunofluorescence](#)
- [Immunoprecipitation](#)
- [Flow Cytometry](#)
- [Cell Culture](#)

## Apaf-1 Polyclonal Antibody - Images







### **Apaf-1 Polyclonal Antibody - Background**

Oligomeric Apaf-1 mediates the cytochrome c-dependent autocatalytic activation of pro-caspase-9 (Apaf-3), leading to the activation of caspase-3 and apoptosis. This activation requires ATP. Isoform 6 is less effective in inducing apoptosis.