

NTCP Polyclonal Antibody
Catalog # AP73555**Specification****NTCP Polyclonal Antibody - Product Information**

Application	WB
Primary Accession	Q14973
Reactivity	Human
Host	Rabbit
Clonality	Polyclonal

NTCP Polyclonal Antibody - Additional Information**Gene ID** 6554**Other Names**

SLC10A1; NTCP; GIG29; Sodium/bile acid cotransporter; Cell growth-inhibiting gene 29 protein; Na(+)/bile acid cotransporter; Na(+)/taurocholate transport protein; Sodium/taurocholate cotransporting polypeptide; Solute carrier family 10 member 1

Dilution

WB~~Western Blot: 1/500 - 1/2000. IHC-p: 1/100-1/300. ELISA: 1/20000. Not yet tested in other applications.

Format

Liquid in PBS containing 50% glycerol, 0.5% BSA and 0.09% (W/V) sodium azide.

Storage Conditions

-20°C

NTCP Polyclonal Antibody - Protein Information**Name** SLC10A1**Synonyms** NTCP**Function**

As a major transporter of conjugated bile salts from plasma into the hepatocyte, it plays a key role in the enterohepatic circulation of bile salts necessary for the solubilization and absorption of dietary fat and fat-soluble vitamins (PubMed: [14660639](http://www.uniprot.org/citations/14660639), PubMed: [24867799](http://www.uniprot.org/citations/24867799), PubMed: [34060352](http://www.uniprot.org/citations/34060352), PubMed: [8132774](http://www.uniprot.org/citations/8132774)). It is strictly dependent on the extracellular presence of sodium (PubMed: [14660639](http://www.uniprot.org/citations/14660639), PubMed: [24867799](http://www.uniprot.org/citations/24867799), PubMed: [34060352](http://www.uniprot.org/citations/34060352), PubMed: [8132774](http://www.uniprot.org/citations/8132774)).

exhibits broad substrate specificity and transports various bile acids, such as taurocholate, cholate, as well as non-bile acid organic compounds, such as estrone sulfate (PubMed:14660639, PubMed:34060352). Works collaboratively with the ileal transporter (NTCP2), the organic solute transporter (OST), and the bile salt export pump (BSEP), to ensure efficacious biological recycling of bile acids during enterohepatic circulation (PubMed:33222321).

Cellular Location

Cell membrane; Multi-pass membrane protein

Tissue Location

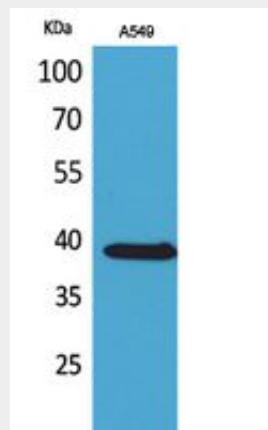
Expressed in liver (PubMed:11031103, PubMed:12409283). Expressed in placental trophoblasts (PubMed:12409283).

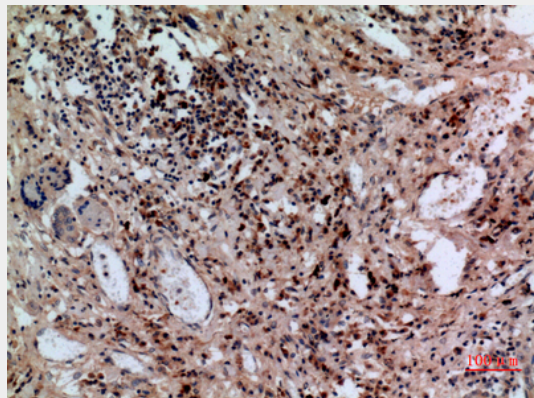
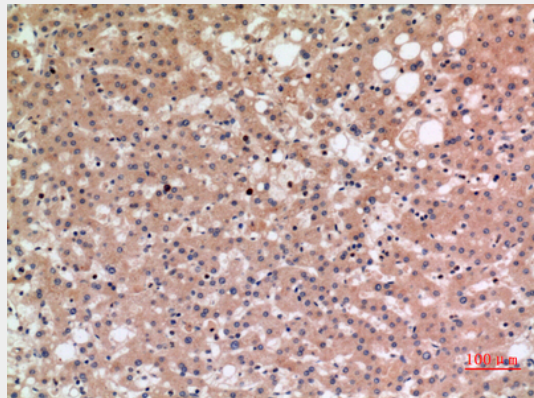
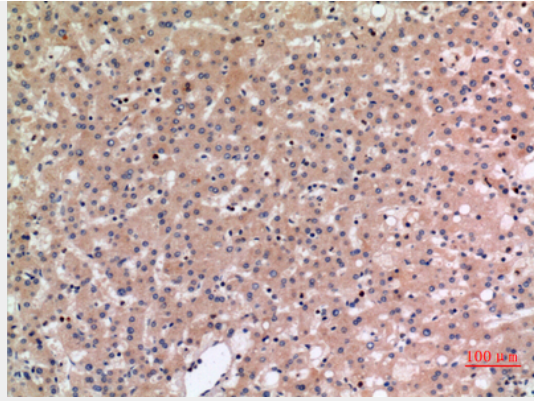
NTCP Polyclonal Antibody - Protocols

Provided below are standard protocols that you may find useful for product applications.

- [Western Blot](#)
- [Blocking Peptides](#)
- [Dot Blot](#)
- [Immunohistochemistry](#)
- [Immunofluorescence](#)
- [Immunoprecipitation](#)
- [Flow Cytometry](#)
- [Cell Culture](#)

NTCP Polyclonal Antibody - Images





NTCP Polyclonal Antibody - Background

The hepatic sodium/bile acid uptake system exhibits broad substrate specificity and transports various non-bile acid organic compounds as well. It is strictly dependent on the extracellular presence of sodium.