

MMP-9 Polyclonal Antibody

Catalog # AP73540

Specification

MMP-9 Polyclonal Antibody - Product Information

Application	IF
Primary Accession	P14780
Reactivity	Human
Host	Rabbit
Clonality	Polyclonal

MMP-9 Polyclonal Antibody - Additional Information

Gene ID 4318

Other Names

MMP9; CLG4B; Matrix metalloproteinase-9; MMP-9; 92 kDa gelatinase; 92 kDa type IV collagenase; Gelatinase B; GELB

Dilution

IF~IF: 1:50-200 Western Blot: 1/500 - 1/2000. IHC-p: 1/100-1/300. ELISA: 1/20000. Not yet tested in other applications.

Format

Liquid in PBS containing 50% glycerol, 0.5% BSA and 0.09% (W/V) sodium azide.

Storage Conditions

-20°C

MMP-9 Polyclonal Antibody - Protein Information

Name MMP9

Synonyms CLG4B

Function

Matrix metalloproteinase that plays an essential role in local proteolysis of the extracellular matrix and in leukocyte migration (PubMed: [12879005](http://www.uniprot.org/citations/12879005), PubMed: [1480034](http://www.uniprot.org/citations/1480034), PubMed: [2551898](http://www.uniprot.org/citations/2551898)). Could play a role in bone osteoclastic resorption (By similarity). Cleaves KiSS1 at a Gly-I-Leu bond (PubMed: [12879005](http://www.uniprot.org/citations/12879005)). Cleaves NINJ1 to generate the Secreted ninjurin-1 form (PubMed: [32883094](http://www.uniprot.org/citations/32883094)). Cleaves type IV and type V collagen into large C-terminal three quarter fragments and shorter N-terminal one quarter fragments (PubMed: [1480034](http://www.uniprot.org/citations/1480034)). Degrades fibronectin but not laminin or Pz-peptide.

Cellular Location

Secreted, extracellular space, extracellular matrix

Tissue Location

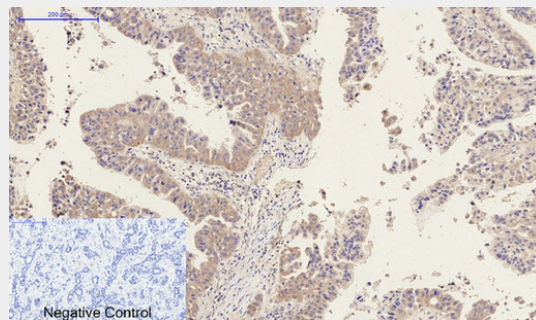
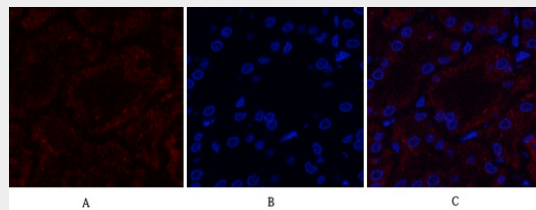
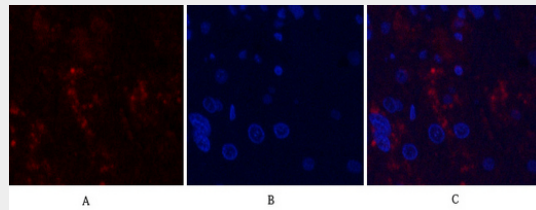
Detected in neutrophils (at protein level) (PubMed:7683678). Produced by normal alveolar macrophages and granulocytes.

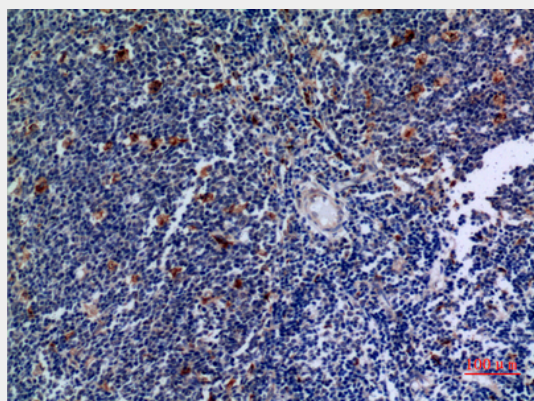
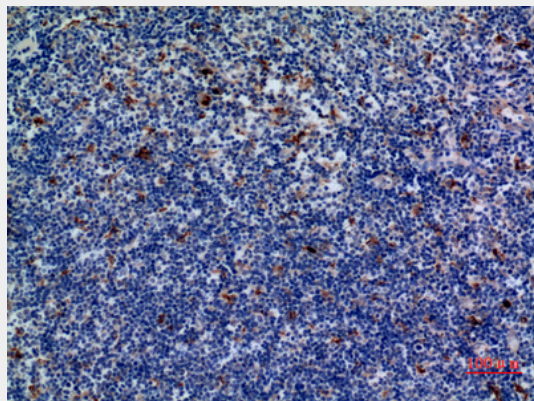
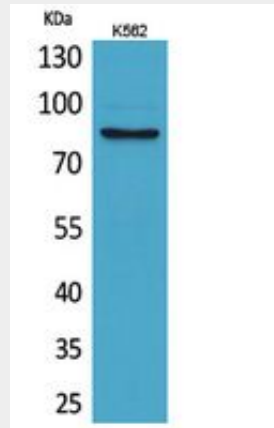
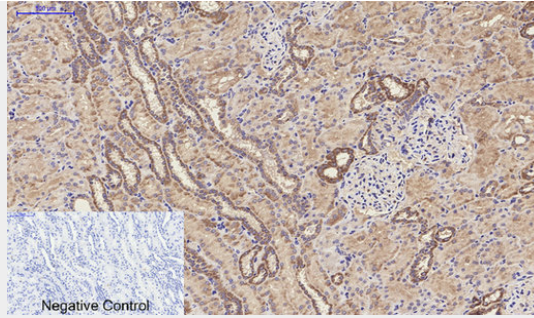
MMP-9 Polyclonal Antibody - Protocols

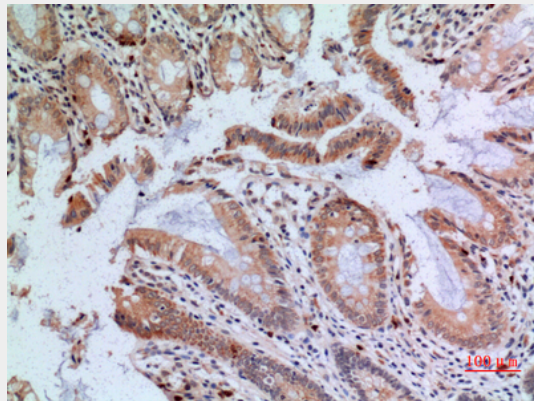
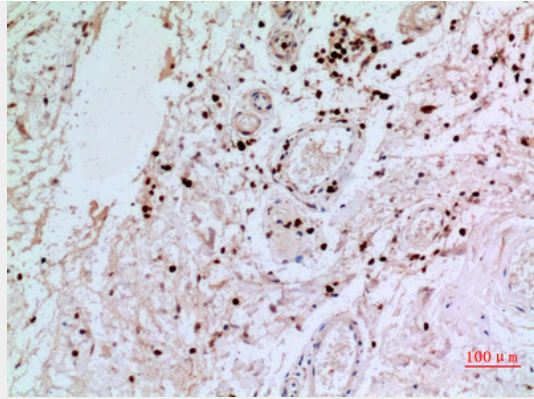
Provided below are standard protocols that you may find useful for product applications.

- [Western Blot](#)
- [Blocking Peptides](#)
- [Dot Blot](#)
- [Immunohistochemistry](#)
- [Immunofluorescence](#)
- [Immunoprecipitation](#)
- [Flow Cytometry](#)
- [Cell Culture](#)

MMP-9 Polyclonal Antibody - Images







MMP-9 Polyclonal Antibody - Background

May play an essential role in local proteolysis of the extracellular matrix and in leukocyte migration. Could play a role in bone osteoclastic resorption. Cleaves KiSS1 at a Gly-|-Leu bond. Cleaves type IV and type V collagen into large C-terminal three quarter fragments and shorter N-terminal one quarter fragments. Degrades fibronectin but not laminin or Pz-peptide.