

**Smad1 Polyclonal Antibody**  
Catalog # AP73530**Specification****Smad1 Polyclonal Antibody - Product Information**

Application	WB
Primary Accession	<a href="#">Q15797</a>
Reactivity	Human, Mouse, Rat
Host	Rabbit
Clonality	Polyclonal

**Smad1 Polyclonal Antibody - Additional Information****Gene ID** 4086**Other Names**

SMAD1; BSP1; MADH1; MADR1; Mothers against decapentaplegic homolog 1; MAD homolog 1; Mothers against DPP homolog 1; JV4-1; Mad-related protein 1; SMAD family member 1; SMAD 1; Smad1; hSMAD1; Transforming growth factor-beta-signaling protein 1; BSP-1

**Dilution**

WB~~Western Blot: 1/500 - 1/2000. ELISA: 1/20000. Not yet tested in other applications.

**Format**

Liquid in PBS containing 50% glycerol, 0.5% BSA and 0.09% (W/V) sodium azide.

**Storage Conditions**

-20°C

**Smad1 Polyclonal Antibody - Protein Information****Name** SMAD1**Synonyms** BSP1, MADH1, MADR1**Function**

Transcriptional modulator that plays a role in various cellular processes, including embryonic development, cell differentiation, and tissue homeostasis (PubMed:[9335504](http://www.uniprot.org/citations/9335504)). Upon BMP ligand binding to their receptors at the cell surface, is phosphorylated by activated type I BMP receptors (BMPRI) and associates with SMAD4 to form a heteromeric complex which translocates into the nucleus acting as transcription factor (PubMed:[33667543](http://www.uniprot.org/citations/33667543)). In turn, the hetero-trimeric complex recognizes cis-regulatory elements containing Smad Binding Elements (SBEs) to modulate the outcome of the signaling network (PubMed:[33667543](http://www.uniprot.org/citations/33667543)). SMAD1/OAZ1/PSMB4 complex mediates the degradation of the CREBBP/EP300 repressor SNIP1. Positively regulates BMP4-induced expression of odontogenic development regulator MSX1

following IPO7-mediated nuclear import (By similarity).

#### Cellular Location

Cytoplasm. Nucleus Note=Cytoplasmic in the absence of ligand. Migrates to the nucleus when complexed with SMAD4 (PubMed:15647271). Co-localizes with LEMD3 at the nucleus inner membrane (PubMed:15647271). Exported from the nucleus to the cytoplasm when dephosphorylated (By similarity) {ECO:0000250|UniProtKB:P70340, ECO:0000269|PubMed:15647271}

#### Tissue Location

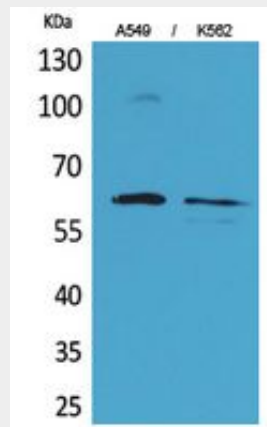
Ubiquitous. Highest expression seen in the heart and skeletal muscle

### Smad1 Polyclonal Antibody - Protocols

Provided below are standard protocols that you may find useful for product applications.

- [Western Blot](#)
- [Blocking Peptides](#)
- [Dot Blot](#)
- [Immunohistochemistry](#)
- [Immunofluorescence](#)
- [Immunoprecipitation](#)
- [Flow Cytometry](#)
- [Cell Culture](#)

### Smad1 Polyclonal Antibody - Images



### Smad1 Polyclonal Antibody - Background

Transcriptional modulator activated by BMP (bone morphogenetic proteins) type 1 receptor kinase. SMAD1 is a receptor-regulated SMAD (R-SMAD). SMAD1/OAZ1/PSMB4 complex mediates the degradation of the CREBBP/EP300 repressor SNIP1. May act synergistically with SMAD4 and YY1 in bone morphogenetic protein (BMP)-mediated cardiac-specific gene expression.