

Cytokeratin 8 Polyclonal Antibody
Catalog # AP73511**Specification**

Cytokeratin 8 Polyclonal Antibody - Product Information

Application	WB
Primary Accession	P05787
Reactivity	Human
Host	Rabbit
Clonality	Polyclonal

Cytokeratin 8 Polyclonal Antibody - Additional Information**Gene ID** 3856**Other Names**

KRT8; CYK8; Keratin, type II cytoskeletal 8; Cytokeratin-8; CK-8; Keratin-8; K8; Type-II keratin Kb8

Dilution

WB~~Western Blot: 1/500 - 1/2000. IHC-p: 1/100-1/300. ELISA: 1/20000. Not yet tested in other applications.

Format

Liquid in PBS containing 50% glycerol, 0.5% BSA and 0.09% (W/V) sodium azide.

Storage Conditions

-20°C

Cytokeratin 8 Polyclonal Antibody - Protein Information**Name** KRT8**Synonyms** CYK8**Function**

Together with KRT19, helps to link the contractile apparatus to dystrophin at the costameres of striated muscle.

Cellular Location

Cytoplasm. Nucleus, nucleoplasm {ECO:0000250|UniProtKB:Q10758}. Nucleus matrix {ECO:0000250|UniProtKB:Q10758}

Tissue Location

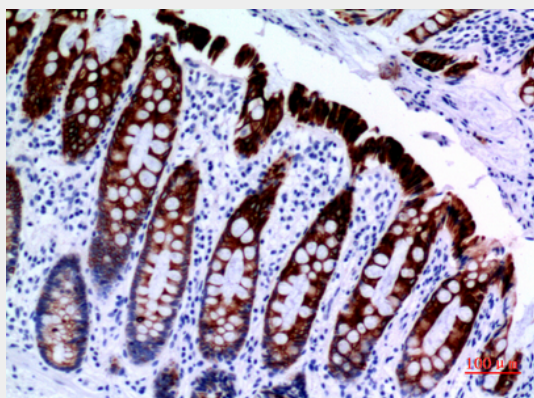
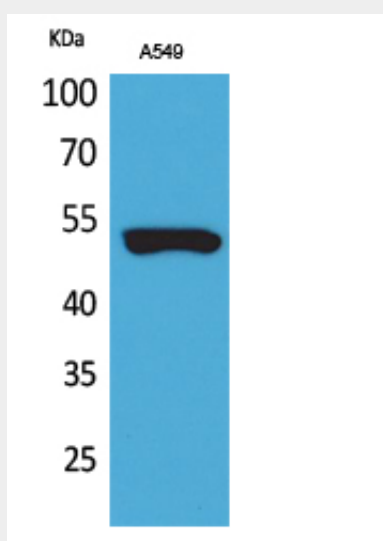
Observed in muscle fibers accumulating in the costameres of myoplasm at the sarcolemma membrane in structures that contain dystrophin and spectrin. Expressed in gingival mucosa and hard palate of the oral cavity.

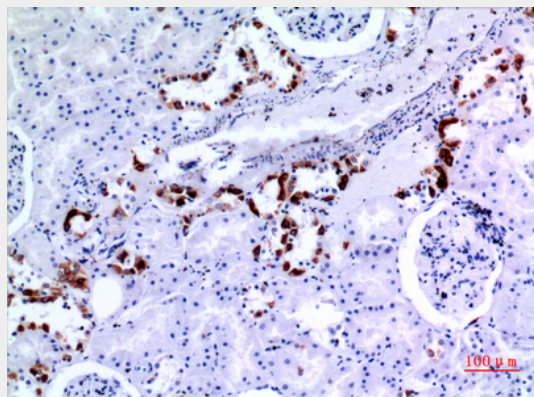
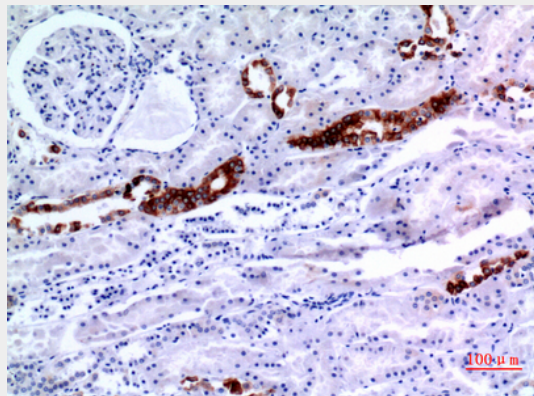
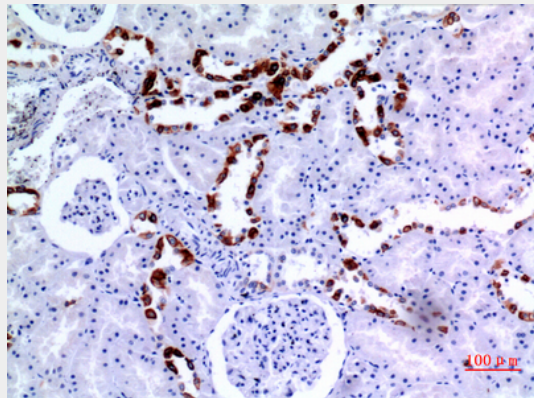
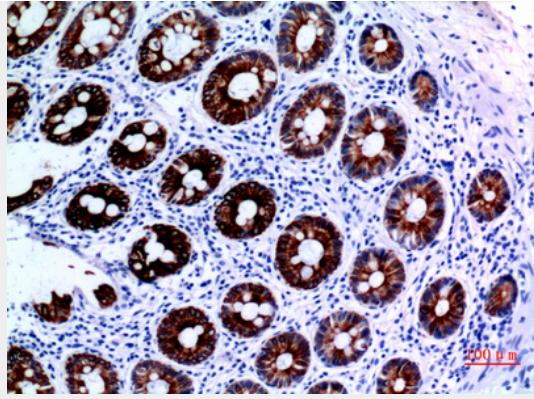
Cytokeratin 8 Polyclonal Antibody - Protocols

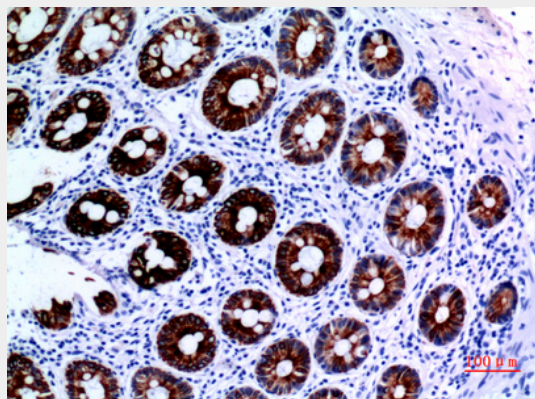
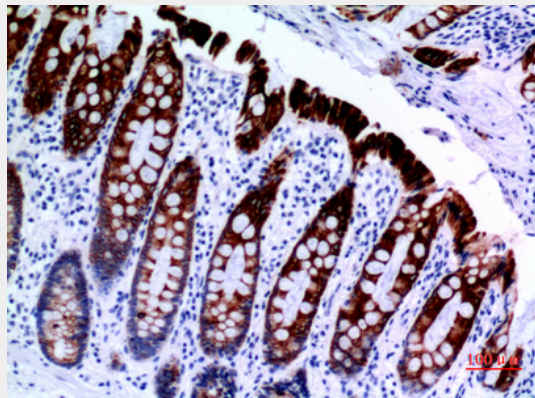
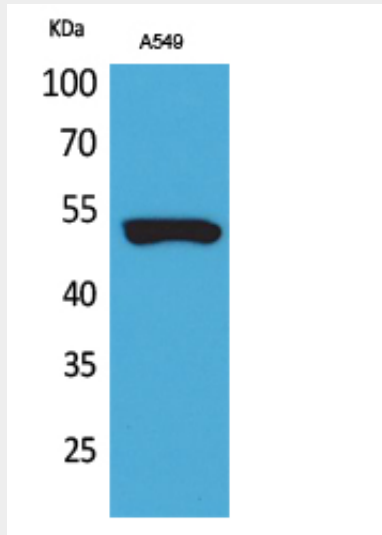
Provided below are standard protocols that you may find useful for product applications.

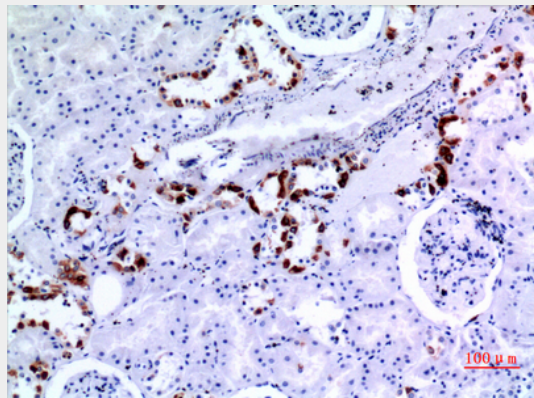
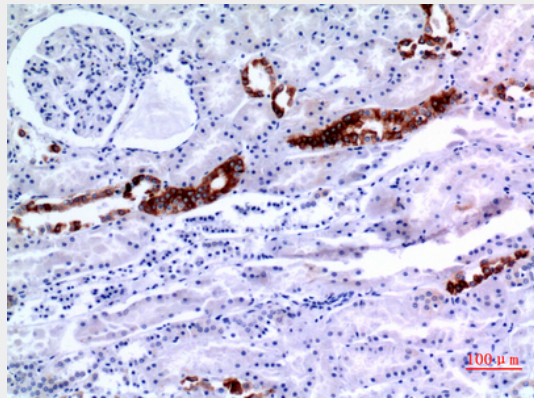
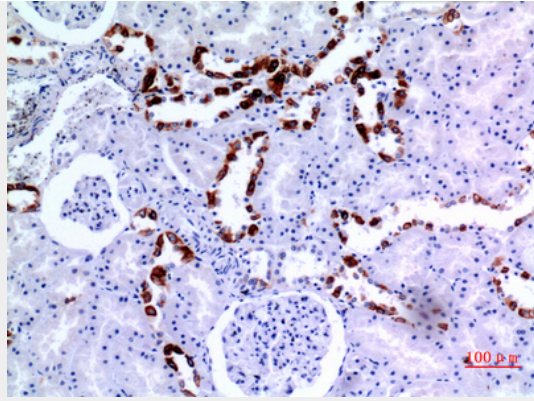
- [Western Blot](#)
- [Blocking Peptides](#)
- [Dot Blot](#)
- [Immunohistochemistry](#)
- [Immunofluorescence](#)
- [Immunoprecipitation](#)
- [Flow Cytometry](#)
- [Cell Culture](#)

Cytokeratin 8 Polyclonal Antibody - Images









Cytokeratin 8 Polyclonal Antibody - Background

Together with KRT19, helps to link the contractile apparatus to dystrophin at the costameres of striated muscle.