

**ZKSCAN4 Polyclonal Antibody**  
Catalog # AP73498**Specification**

---

**ZKSCAN4 Polyclonal Antibody - Product Information**

Application	WB
Primary Accession	<a href="#">Q969J2</a>
Reactivity	Human
Host	Rabbit
Clonality	Polyclonal

**ZKSCAN4 Polyclonal Antibody - Additional Information****Gene ID** 387032**Other Names**

ZKSCAN4; ZNF307; ZNF427; Zinc finger protein with KRAB and SCAN domains 4; P373c6.1; Zinc finger protein 307; Zinc finger protein 427

**Dilution**

WB~~Western Blot: 1/500 - 1/2000. IHC-p: 1/100-1/300. ELISA: 1/20000. Not yet tested in other applications.

**Format**

Liquid in PBS containing 50% glycerol, 0.5% BSA and 0.09% (W/V) sodium azide.

**Storage Conditions**

-20°C

**ZKSCAN4 Polyclonal Antibody - Protein Information****Name** ZKSCAN4**Synonyms** ZNF307, ZNF427**Function**

May be involved in the transcriptional activation of MDM2 and EP300 genes.

**Cellular Location**

Nucleus {ECO:0000255|PROSITE-ProRule:PRU00187, ECO:0000269|PubMed:17910948}

**Tissue Location**

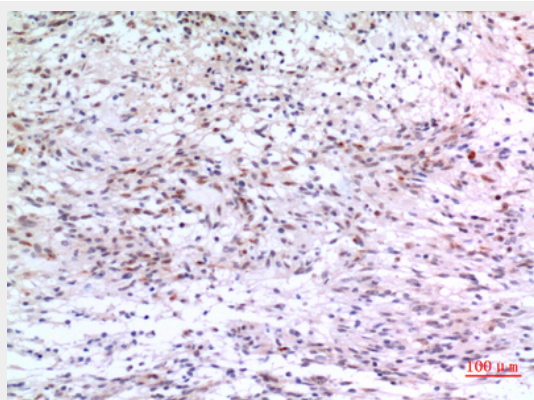
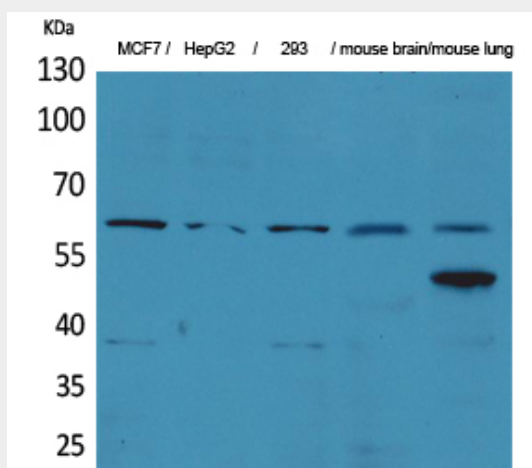
Expressed in adult heart, brain, placenta, lung and kidney, but not in adult liver and skeletal muscle. In 17-day old embryo, detected in liver, skeletal muscle, brain, heart and small intestine.

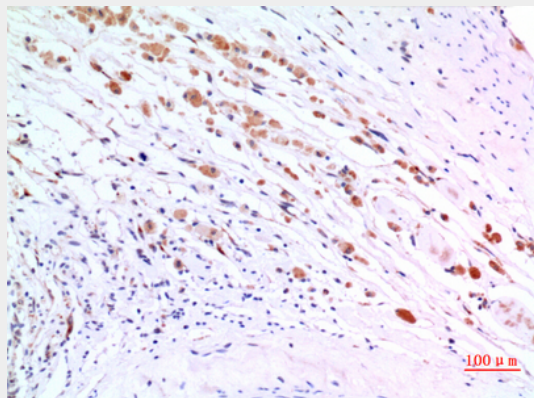
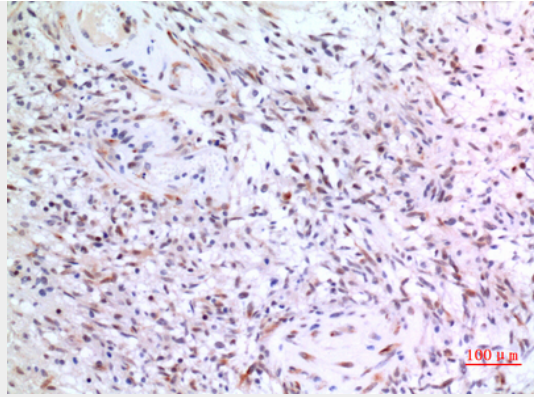
**ZKSCAN4 Polyclonal Antibody - Protocols**

Provided below are standard protocols that you may find useful for product applications.

- [Western Blot](#)
- [Blocking Peptides](#)
- [Dot Blot](#)
- [Immunohistochemistry](#)
- [Immunofluorescence](#)
- [Immunoprecipitation](#)
- [Flow Cytometry](#)
- [Cell Culture](#)

### ZKSCAN4 Polyclonal Antibody - Images





### **ZKSCAN4 Polyclonal Antibody - Background**

May be involved in the transcriptional activation of MDM2 and EP300 genes.