

**SCCA1/2 Polyclonal Antibody**  
Catalog # AP73493**Specification**

---

**SCCA1/2 Polyclonal Antibody - Product Information**

Application	WB
Primary Accession	<a href="#">P29508</a>
Reactivity	Human
Host	Rabbit
Clonality	Polyclonal

**SCCA1/2 Polyclonal Antibody - Additional Information****Gene ID** 6317**Other Names**

SERPINB3; SCCA; SCCA1; Serpin B3; Protein T4-A; Squamous cell carcinoma antigen 1; SCCA-1

**Dilution**

WB~~Western Blot: 1/500 - 1/2000. IHC-p: 1/100-1/300. ELISA: 1/20000. Not yet tested in other applications.

**Format**

Liquid in PBS containing 50% glycerol, 0.5% BSA and 0.09% (W/V) sodium azide.

**Storage Conditions**

-20°C

**SCCA1/2 Polyclonal Antibody - Protein Information****Name** SERPINB3**Synonyms** SCCA, SCCA1**Function**

May act as a papain-like cysteine protease inhibitor to modulate the host immune response against tumor cells. Also functions as an inhibitor of UV-induced apoptosis via suppression of the activity of c-Jun NH(2)-terminal kinase (JNK1).

**Cellular Location**

Cytoplasm. Note=Seems to also be secreted in plasma by cancerous cells but at a low level

**Tissue Location**

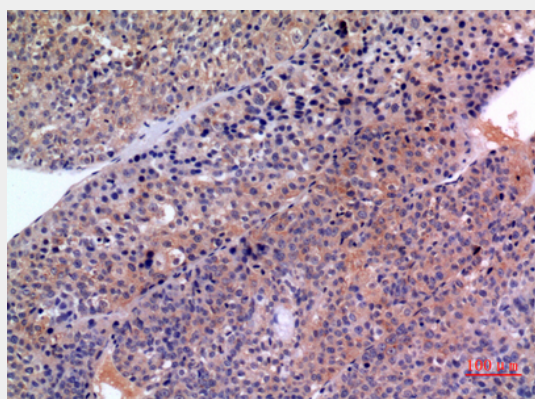
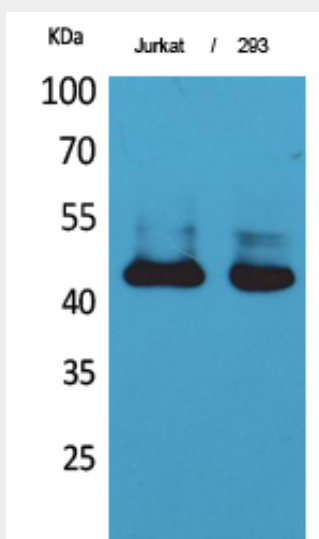
Squamous cells. Expressed in some hepatocellular carcinoma (at protein level).

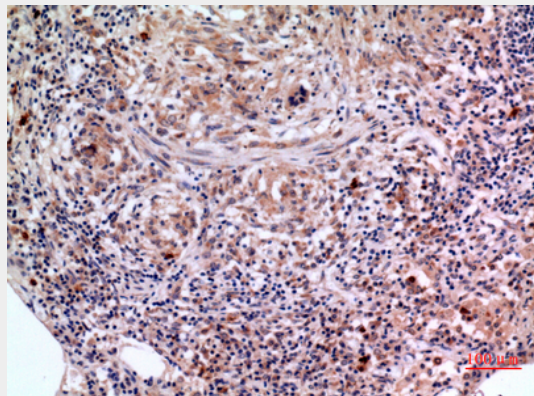
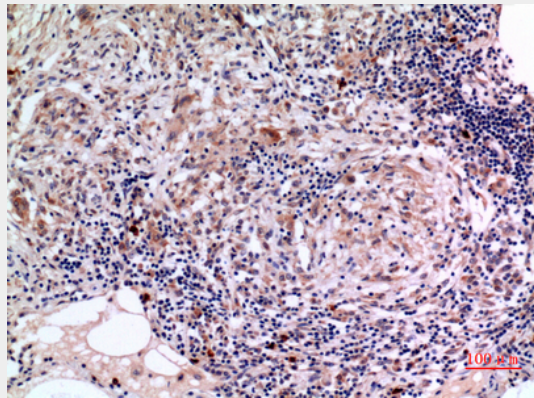
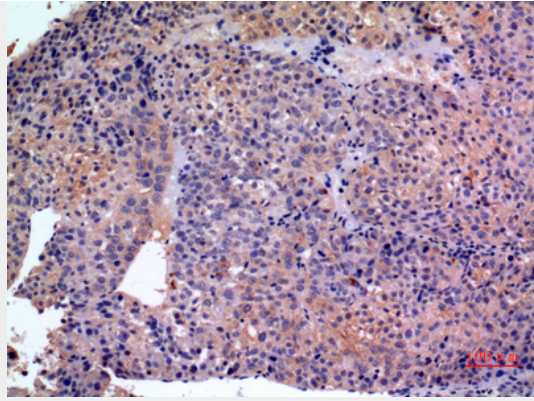
**SCCA1/2 Polyclonal Antibody - Protocols**

Provided below are standard protocols that you may find useful for product applications.

- [Western Blot](#)
- [Blocking Peptides](#)
- [Dot Blot](#)
- [Immunohistochemistry](#)
- [Immunofluorescence](#)
- [Immunoprecipitation](#)
- [Flow Cytometry](#)
- [Cell Culture](#)

#### SCCA1/2 Polyclonal Antibody - Images





### **SCCA1/2 Polyclonal Antibody - Background**

May act as a papain-like cysteine protease inhibitor to modulate the host immune response against tumor cells. Also functions as an inhibitor of UV-induced apoptosis via suppression of the activity of c-Jun NH(2)-terminal kinase (JNK1).