

**S100A6 Antibody (C-term)**  
**Purified Rabbit Polyclonal Antibody (Pab)**  
**Catalog # AP7346b**

**Specification**

---

**S100A6 Antibody (C-term) - Product Information**

|                   |                        |
|-------------------|------------------------|
| Application       | WB, FC,E               |
| Primary Accession | <a href="#">P06703</a> |
| Reactivity        | Human, Mouse           |
| Host              | Rabbit                 |
| Clonality         | Polyclonal             |
| Isotype           | Rabbit IgG             |
| Calculated MW     | 10180                  |
| Antigen Region    | 37-67                  |

**S100A6 Antibody (C-term) - Additional Information**

**Gene ID** 6277

**Other Names**

Protein S100-A6, Calcyclin, Growth factor-inducible protein 2A9, MLN 4, Prolactin receptor-associated protein, PRA, S100 calcium-binding protein A6, S100A6, CACY

**Target/Specificity**

This S100A6 antibody is generated from rabbits immunized with a KLH conjugated synthetic peptide between 37-67 amino acids from the C-terminal region of human S100A6.

**Dilution**

WB~~1:1000  
FC~~1:10~50

**Format**

Purified polyclonal antibody supplied in PBS with 0.09% (W/V) sodium azide. This antibody is prepared by Saturated Ammonium Sulfate (SAS) precipitation followed by dialysis against PBS.

**Storage**

Maintain refrigerated at 2-8°C for up to 2 weeks. For long term storage store at -20°C in small aliquots to prevent freeze-thaw cycles.

**Precautions**

S100A6 Antibody (C-term) is for research use only and not for use in diagnostic or therapeutic procedures.

**S100A6 Antibody (C-term) - Protein Information**

**Name** S100A6

**Synonyms** CACY

**Function** May function as calcium sensor and modulator, contributing to cellular calcium signaling. May function by interacting with other proteins, such as TPR-containing proteins, and indirectly play a role in many physiological processes such as the reorganization of the actin cytoskeleton and in cell motility. Binds 2 calcium ions. Calcium binding is cooperative.

**Cellular Location**

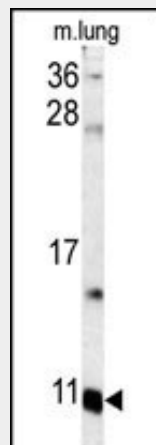
Nucleus envelope. Cytoplasm. Cell membrane; Peripheral membrane protein; Cytoplasmic side

**S100A6 Antibody (C-term) - Protocols**

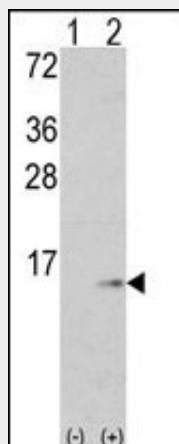
Provided below are standard protocols that you may find useful for product applications.

- [Western Blot](#)
- [Blocking Peptides](#)
- [Dot Blot](#)
- [Immunohistochemistry](#)
- [Immunofluorescence](#)
- [Immunoprecipitation](#)
- [Flow Cytometry](#)
- [Cell Culture](#)

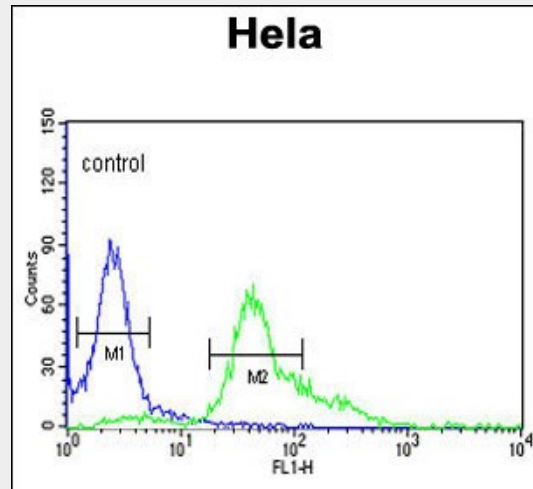
**S100A6 Antibody (C-term) - Images**



Western blot analysis of S100A6 antibody (C-term) (Cat.#AP7346b) in mouse lung tissue lysates (35ug/lane). S100A6 (arrow) was detected using the purified Pab.



Western blot analysis of S100A6 (arrow) using rabbit polyclonal S100A6 Antibody (C-term) (Cat. #AP7346b). 293 cell lysates (2 ug/lane) either nontransfected (Lane 1) or transiently transfected with the S100A6 gene (Lane 2) (Origene Technologies).



S100A6 Antibody (C-term) (Cat. #AP7346b) flow cytometric analysis of Hela cells (right histogram) compared to a negative control cell (left histogram). FITC-conjugated goat-anti-rabbit secondary antibodies were used for the analysis.

#### **S100A6 Antibody (C-term) - Background**

S100A6 is a member of the S100 family of proteins containing 2 EF-hand calcium-binding motifs. S100 proteins are localized in the cytoplasm and/or nucleus of a wide range of cells, and involved in the regulation of a number of cellular processes such as cell cycle progression and differentiation. This protein may function in stimulation of Ca<sup>2+</sup>-dependent insulin release, stimulation of prolactin secretion, and exocytosis.

#### **S100A6 Antibody (C-term) - References**

- van Dieck, J. J. Biol. Chem. 284 (20), 13804-13811 (2009)
- Tsoporis, J.N., Izhar, S. J. Biol. Chem. 283 (44), 30174-30183 (2008)
- Lee, Y.T., Dimitrova, Y.N. Biochemistry 47 (41), 10921-10932 (2008)
- Melle, C., Ernst, G. PLoS ONE 3 (12), E3767 (2008)