

**CD107a Polyclonal Antibody**  
Catalog # AP73443**Specification****CD107a Polyclonal Antibody - Product Information**

Application	<b>WB</b>
Primary Accession	<a href="#">P11279</a>
Reactivity	<b>Human, Rat</b>
Host	<b>Rabbit</b>
Clonality	<b>Polyclonal</b>

**CD107a Polyclonal Antibody - Additional Information****Gene ID** 3916**Other Names**

LAMP1; Lysosome-associated membrane glycoprotein 1; LAMP-1; Lysosome-associated membrane protein 1; CD107 antigen-like family member A; CD107a

**Dilution**

WB~~Western Blot: 1/500 - 1/2000. ELISA: 1/20000. Not yet tested in other applications.

**Format**

Liquid in PBS containing 50% glycerol, 0.5% BSA and 0.09% (W/V) sodium azide.

**Storage Conditions**

-20°C

**CD107a Polyclonal Antibody - Protein Information****Name** LAMP1 {ECO:0000303|PubMed:23632890, ECO:0000312|HGNC:HGNC:6499}**Function**

Lysosomal membrane glycoprotein which plays an important role in lysosome biogenesis, lysosomal pH regulation, autophagy and cholesterol homeostasis (PubMed:<a href="http://www.uniprot.org/citations/37390818" target="\_blank">37390818</a>). Acts as an important regulator of lysosomal lumen pH regulation by acting as a direct inhibitor of the proton channel TMEM175, facilitating lysosomal acidification for optimal hydrolase activity (PubMed:<a href="http://www.uniprot.org/citations/37390818" target="\_blank">37390818</a>). Also plays an important role in NK-cells cytotoxicity (PubMed:<a href="http://www.uniprot.org/citations/2022921" target="\_blank">2022921</a>, PubMed:<a href="http://www.uniprot.org/citations/23632890" target="\_blank">23632890</a>). Mechanistically, participates in cytotoxic granule movement to the cell surface and perforin trafficking to the lytic granule (PubMed:<a href="http://www.uniprot.org/citations/23632890" target="\_blank">23632890</a>). In addition, protects NK-cells from degranulation-associated damage induced by their own cytotoxic granule content (PubMed:<a href="http://www.uniprot.org/citations/23847195" target="\_blank">23847195</a>). Presents carbohydrate ligands to selectins (PubMed:<a href="http://www.uniprot.org/citations/7685349" target="\_blank">7685349</a>).

target="\_blank">7685349</a>).

#### Cellular Location

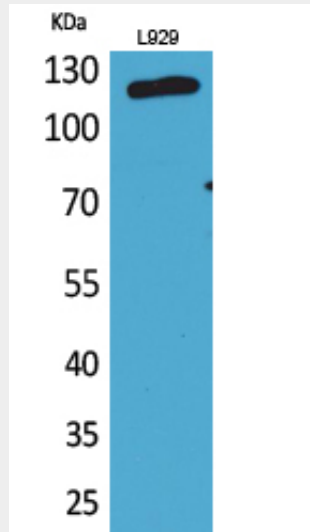
Lysosome membrane; Single-pass type I membrane protein. Endosome membrane; Single-pass type I membrane protein. Late endosome membrane; Single-pass type I membrane protein. Cell membrane; Single-pass type I membrane protein. Cytolytic granule membrane; Single-pass type I membrane protein. Note=This protein shuttles between lysosomes, endosomes, and the plasma membrane (By similarity). Colocalizes with OSBPL1A at the late endosome (PubMed:16176980). {ECO:0000250|UniProtKB:P05300, ECO:0000269|PubMed:16176980, ECO:0000269|PubMed:17897319}

#### CD107a Polyclonal Antibody - Protocols

Provided below are standard protocols that you may find useful for product applications.

- [Western Blot](#)
- [Blocking Peptides](#)
- [Dot Blot](#)
- [Immunohistochemistry](#)
- [Immunofluorescence](#)
- [Immunoprecipitation](#)
- [Flow Cytometry](#)
- [Cell Culture](#)

#### CD107a Polyclonal Antibody - Images



#### CD107a Polyclonal Antibody - Background

Presents carbohydrate ligands to selectins. Also implicated in tumor cell metastasis.