

CD32-A Polyclonal Antibody
Catalog # AP73428**Specification**

CD32-A Polyclonal Antibody - Product Information

Application	WB
Primary Accession	P12318
Reactivity	Human
Host	Rabbit
Clonality	Polyclonal

CD32-A Polyclonal Antibody - Additional Information**Gene ID** 2212**Other Names**

FCGR2A; CD32; FCG2; FCGR2A1; IGFR2; Low affinity immunoglobulin gamma Fc region receptor II-a; IgG Fc receptor II-a; CDw32; Fc-gamma RII-a; Fc-gamma-RIIa; FcRII-a; CD32

Dilution

WB~~Western Blot: 1/500 - 1/2000. ELISA: 1/20000. Not yet tested in other applications.

Format

Liquid in PBS containing 50% glycerol, 0.5% BSA and 0.09% (W/V) sodium azide.

Storage Conditions

-20°C

CD32-A Polyclonal Antibody - Protein Information**Name** FCGR2A**Synonyms** CD32, FCG2, FCGR2A1, IGFR2**Function**

Binds to the Fc region of immunoglobulins gamma. Low affinity receptor. By binding to IgG it initiates cellular responses against pathogens and soluble antigens. Promotes phagocytosis of opsonized antigens.

Cellular Location

Cell membrane; Single-pass type I membrane protein

Tissue Location

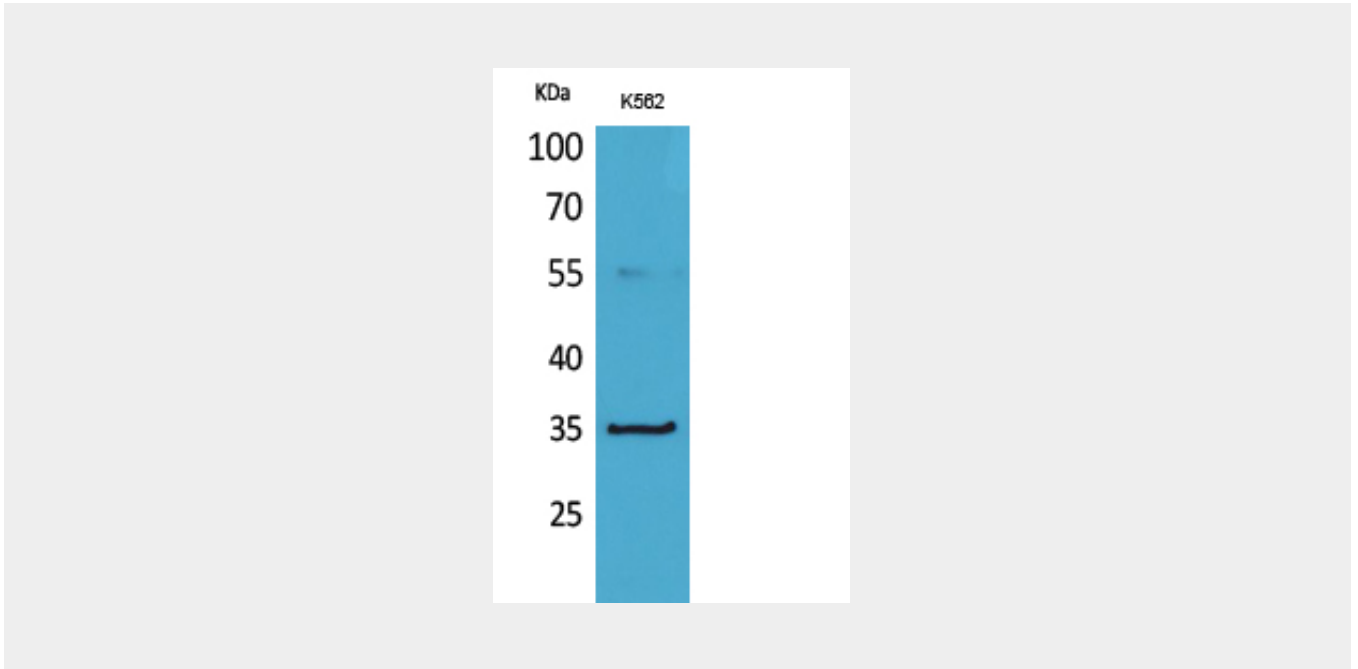
Found on monocytes, neutrophils and eosinophil platelets

CD32-A Polyclonal Antibody - Protocols

Provided below are standard protocols that you may find useful for product applications.

- [Western Blot](#)
- [Blocking Peptides](#)
- [Dot Blot](#)
- [Immunohistochemistry](#)
- [Immunofluorescence](#)
- [Immunoprecipitation](#)
- [Flow Cytometry](#)
- [Cell Culture](#)

CD32-A Polyclonal Antibody - Images



CD32-A Polyclonal Antibody - Background

Binds to the Fc region of immunoglobulins gamma. Low affinity receptor. By binding to IgG it initiates cellular responses against pathogens and soluble antigens. Promotes phagocytosis of opsonized antigens.