

CD7 Polyclonal Antibody
Catalog # AP73425**Specification**

CD7 Polyclonal Antibody - Product Information

Application	WB
Primary Accession	P09564
Reactivity	Human
Host	Rabbit
Clonality	Polyclonal

CD7 Polyclonal Antibody - Additional Information**Gene ID** 924**Other Names**

CD7; T-cell antigen CD7; GP40; T-cell leukemia antigen; T-cell surface antigen Leu-9; TP41; CD7

Dilution

WB~~Western Blot: 1/500 - 1/2000. IHC-p: 1:100-300 ELISA: 1/20000. Not yet tested in other applications.

Format

Liquid in PBS containing 50% glycerol, 0.5% BSA and 0.09% (W/V) sodium azide.

Storage Conditions

-20°C

CD7 Polyclonal Antibody - Protein Information**Name** CD7**Function**

Not yet known.

Cellular Location

Membrane; Single-pass type I membrane protein.

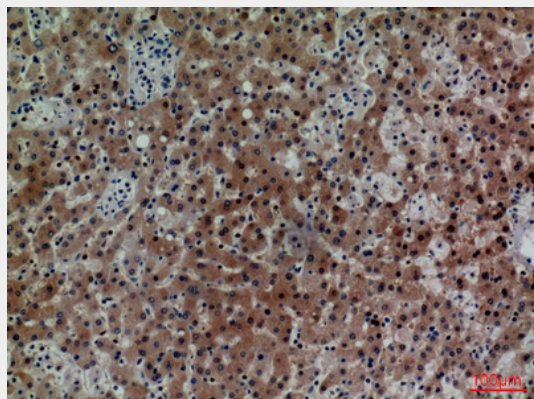
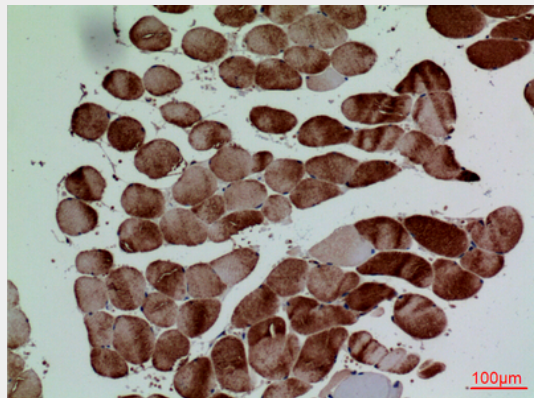
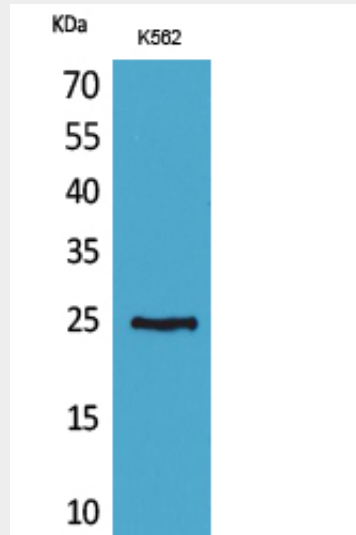
CD7 Polyclonal Antibody - Protocols

Provided below are standard protocols that you may find useful for product applications.

- [Western Blot](#)
- [Blocking Peptides](#)
- [Dot Blot](#)
- [Immunohistochemistry](#)

- [Immunofluorescence](#)
- [Immunoprecipitation](#)
- [Flow Cytometry](#)
- [Cell Culture](#)

CD7 Polyclonal Antibody - Images



CD7 Polyclonal Antibody - Background

Not yet known.