

CD1D Polyclonal Antibody
Catalog # AP73422**Specification**

CD1D Polyclonal Antibody - Product Information

Application	WB
Primary Accession	P15813
Reactivity	Human
Host	Rabbit
Clonality	Polyclonal

CD1D Polyclonal Antibody - Additional Information**Gene ID** 912**Other Names**

CD1D; Antigen-presenting glycoprotein CD1d; R3G1; CD1d

Dilution

WB~~Western Blot: 1/500 - 1/2000. IHC-p: 1:100-300 ELISA: 1/20000. Not yet tested in other applications.

Format

Liquid in PBS containing 50% glycerol, 0.5% BSA and 0.09% (W/V) sodium azide.

Storage Conditions

-20°C

CD1D Polyclonal Antibody - Protein Information**Name** CD1D**Function**

Antigen-presenting protein that binds self and non-self glycolipids and presents them to T-cell receptors on natural killer T- cells.

Cellular Location

Cell membrane; Single-pass type I membrane protein. Basolateral cell membrane; Single-pass type I membrane protein. Endosome membrane; Single-pass type I membrane protein. Lysosome membrane; Single-pass type I membrane protein. Endoplasmic reticulum membrane; Single-pass type I membrane protein. Note=Subject to intracellular trafficking between the cell membrane, endosomes and lysosomes.

Tissue Location

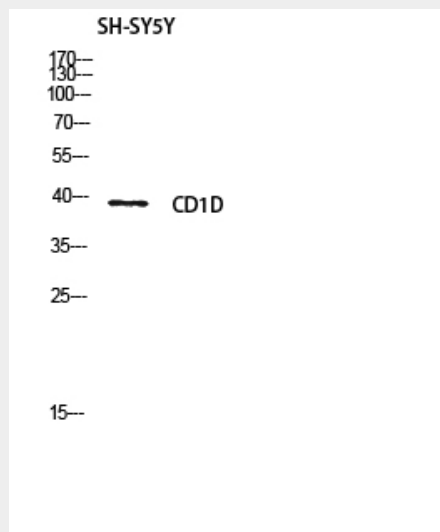
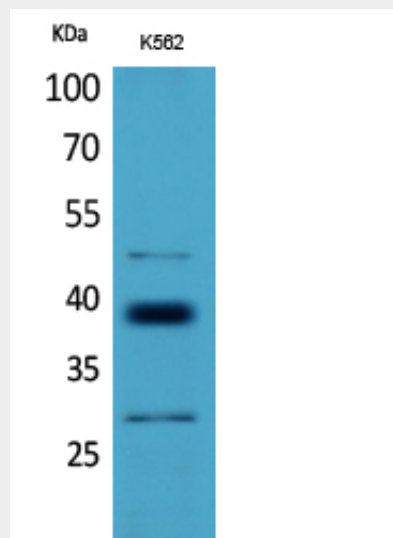
Expressed on cortical thymocytes, on certain T-cell leukemias, and in various other tissues

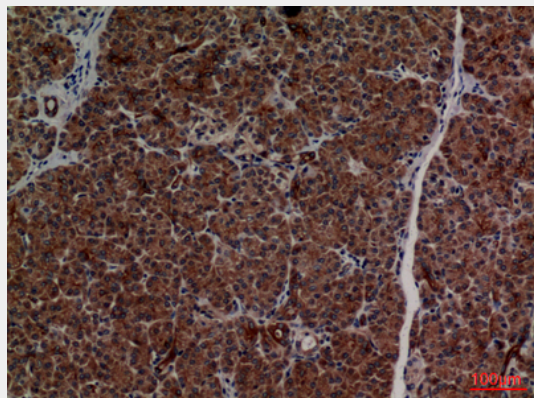
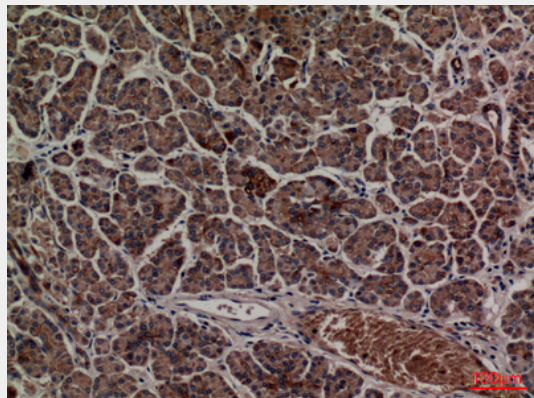
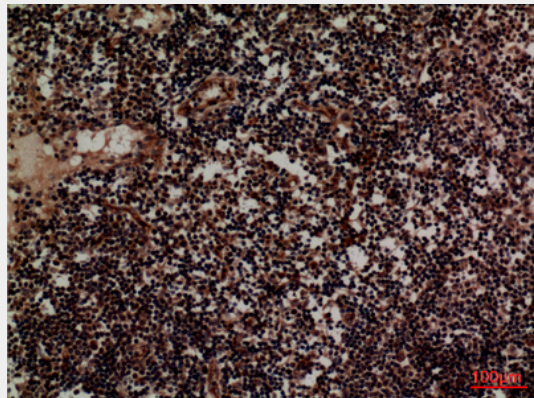
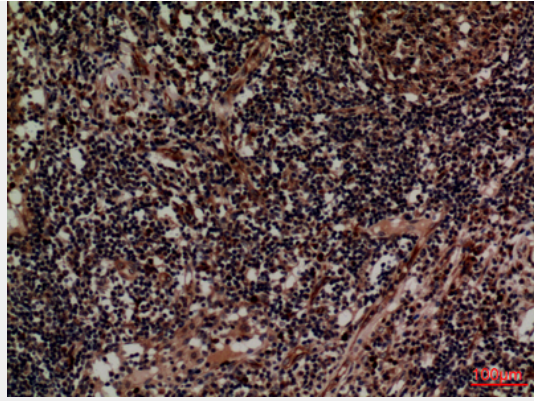
CD1D Polyclonal Antibody - Protocols

Provided below are standard protocols that you may find useful for product applications.

- [Western Blot](#)
- [Blocking Peptides](#)
- [Dot Blot](#)
- [Immunohistochemistry](#)
- [Immunofluorescence](#)
- [Immunoprecipitation](#)
- [Flow Cytometry](#)
- [Cell Culture](#)

CD1D Polyclonal Antibody - Images





CD1D Polyclonal Antibody - Background

Antigen-presenting protein that binds self and non-self glycolipids and presents them to T-cell receptors on natural killer T-cells.