

**CD1C Polyclonal Antibody**  
Catalog # AP73421**Specification**

---

**CD1C Polyclonal Antibody - Product Information**

Application	<b>WB</b>
Primary Accession	<a href="#">P29017</a>
Reactivity	<b>Human</b>
Host	<b>Rabbit</b>
Clonality	<b>Polyclonal</b>

**CD1C Polyclonal Antibody - Additional Information****Gene ID** 911**Other Names**

CD1C; T-cell surface glycoprotein CD1c; CD1c

**Dilution**

WB~~Western Blot: 1/500 - 1/2000. ELISA: 1/20000. Not yet tested in other applications.

**Format**

Liquid in PBS containing 50% glycerol, 0.5% BSA and 0.09% (W/V) sodium azide.

**Storage Conditions**

-20°C

**CD1C Polyclonal Antibody - Protein Information****Name** CD1C**Function**

Antigen-presenting protein that binds self and non-self lipid and glycolipid antigens and presents them to T-cell receptors on natural killer T-cells.

**Cellular Location**

Cell membrane; Single-pass type I membrane protein. Endosome membrane; Single-pass type I membrane protein Lysosome. Note=Subject to intracellular trafficking between the cell membrane and endosomes

**Tissue Location**

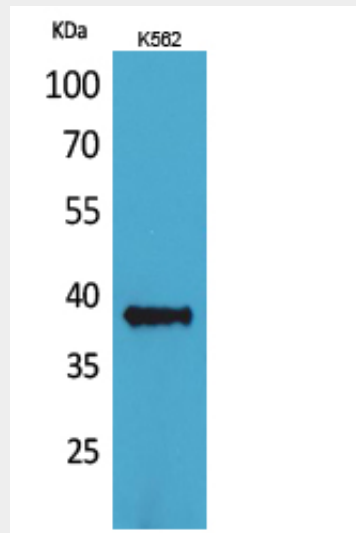
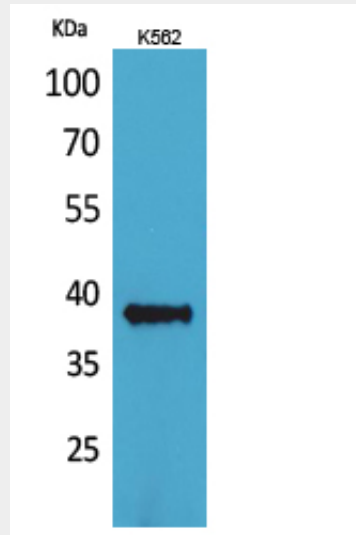
Expressed on cortical thymocytes, on certain T-cell leukemias, and in various other tissues

**CD1C Polyclonal Antibody - Protocols**

Provided below are standard protocols that you may find useful for product applications.

- [Western Blot](#)
- [Blocking Peptides](#)
- [Dot Blot](#)
- [Immunohistochemistry](#)
- [Immunofluorescence](#)
- [Immunoprecipitation](#)
- [Flow Cytometry](#)
- [Cell Culture](#)

### CD1C Polyclonal Antibody - Images



### CD1C Polyclonal Antibody - Background

Antigen-presenting protein that binds self and non-self lipid and glycolipid antigens and presents them to T-cell receptors on natural killer T-cells.