

## SNAP 23 Polyclonal Antibody Catalog # AP73414

### Specification

---

#### SNAP 23 Polyclonal Antibody - Product Information

Application	WB
Primary Accession	<a href="#">O00161</a>
Reactivity	Human
Host	Rabbit
Clonality	Polyclonal

#### SNAP 23 Polyclonal Antibody - Additional Information

Gene ID 8773

#### Other Names

SNAP23; Synaptosomal-associated protein 23; SNAP-23; Vesicle-membrane fusion protein SNAP-23

#### Dilution

WB~~Western Blot: 1/500 - 1/2000. IHC-p: 1:100-300 ELISA: 1/20000. Not yet tested in other applications.

#### Format

Liquid in PBS containing 50% glycerol, 0.5% BSA and 0.09% (W/V) sodium azide.

#### Storage Conditions

-20°C

#### SNAP 23 Polyclonal Antibody - Protein Information

Name SNAP23

#### Function

Essential component of the high affinity receptor for the general membrane fusion machinery and an important regulator of transport vesicle docking and fusion.

#### Cellular Location

Cell membrane; Peripheral membrane protein. Cell membrane; Lipid-anchor. Synapse, synaptosome. Note=Mainly localized to the plasma membrane

#### Tissue Location

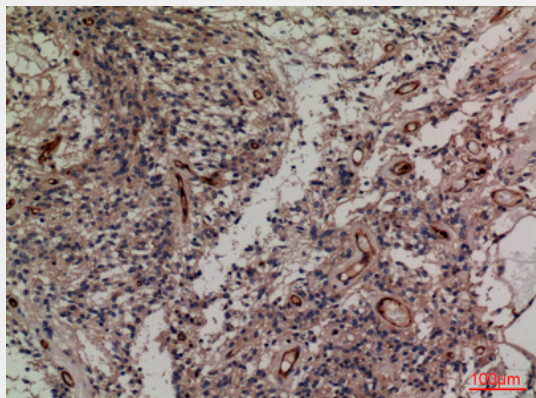
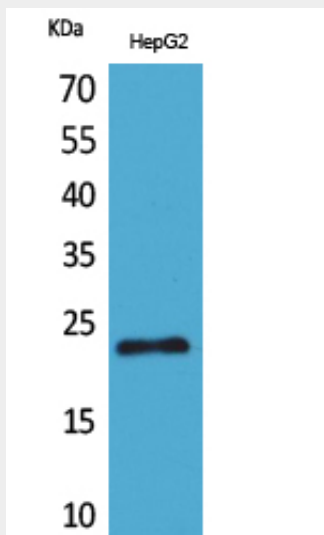
Ubiquitous. Highest levels where found in placenta.

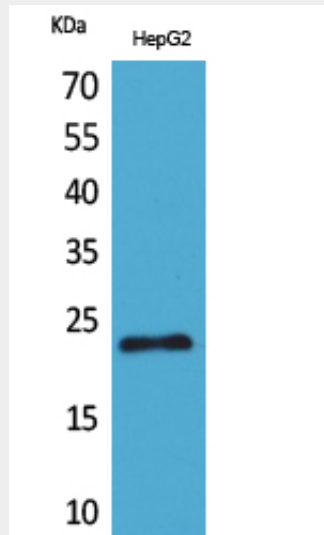
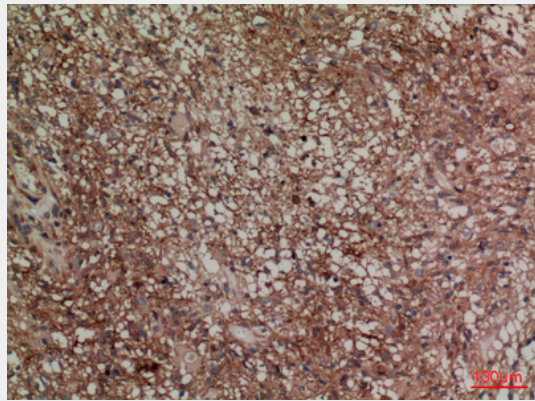
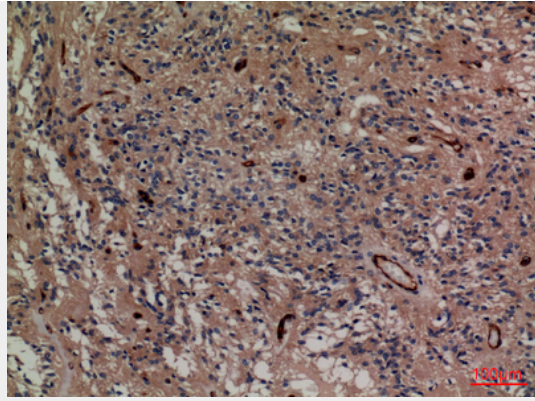
#### SNAP 23 Polyclonal Antibody - Protocols

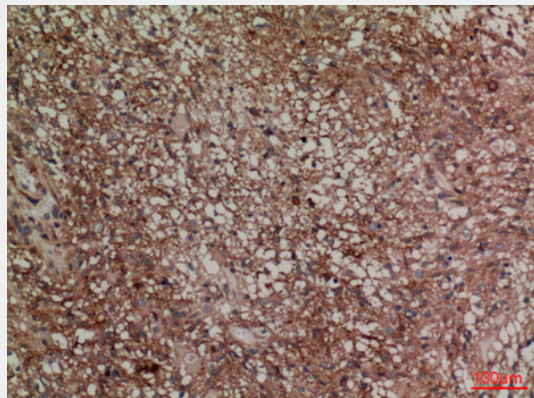
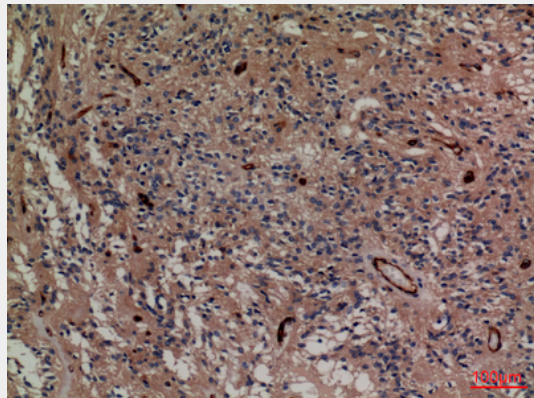
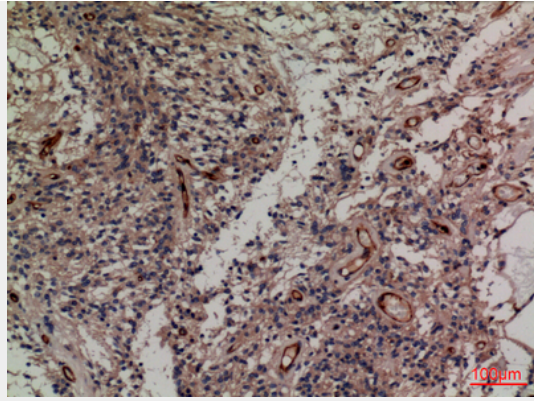
Provided below are standard protocols that you may find useful for product applications.

- [Western Blot](#)
- [Blocking Peptides](#)
- [Dot Blot](#)
- [Immunohistochemistry](#)
- [Immunofluorescence](#)
- [Immunoprecipitation](#)
- [Flow Cytometry](#)
- [Cell Culture](#)

### SNAP 23 Polyclonal Antibody - Images







### **SNAP 23 Polyclonal Antibody - Background**

Essential component of the high affinity receptor for the general membrane fusion machinery and an important regulator of transport vesicle docking and fusion.