

**Protein C Polyclonal Antibody**  
Catalog # AP73404**Specification**

---

**Protein C Polyclonal Antibody - Product Information**

Application	WB
Primary Accession	<a href="#">P04070</a>
Reactivity	Human
Host	Rabbit
Clonality	Polyclonal

**Protein C Polyclonal Antibody - Additional Information****Gene ID** 5624**Other Names**

PROC; Vitamin K-dependent protein C; Anticoagulant protein C; Autoprothrombin IIA; Blood coagulation factor XIV

**Dilution**

WB~~Western Blot: 1/500 - 1/2000. IHC-p: 1:100-300 ELISA: 1/20000. Not yet tested in other applications.

**Format**

Liquid in PBS containing 50% glycerol, 0.5% BSA and 0.09% (W/V) sodium azide.

**Storage Conditions**

-20°C

**Protein C Polyclonal Antibody - Protein Information****Name** PROC**Function**

Protein C is a vitamin K-dependent serine protease that regulates blood coagulation by inactivating factors Va and VIIIa in the presence of calcium ions and phospholipids (PubMed:&lt;a href="http://www.uniprot.org/citations/25618265" target="\_blank"&gt;25618265&lt;/a&gt;). Exerts a protective effect on the endothelial cell barrier function (PubMed:&lt;a href="http://www.uniprot.org/citations/25651845" target="\_blank"&gt;25651845&lt;/a&gt;).

**Cellular Location**

Secreted. Golgi apparatus Endoplasmic reticulum

**Tissue Location**

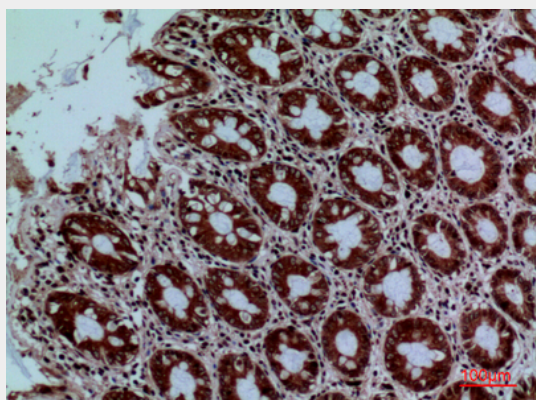
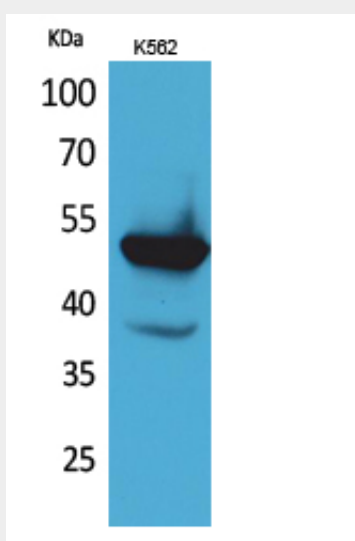
Plasma; synthesized in the liver.

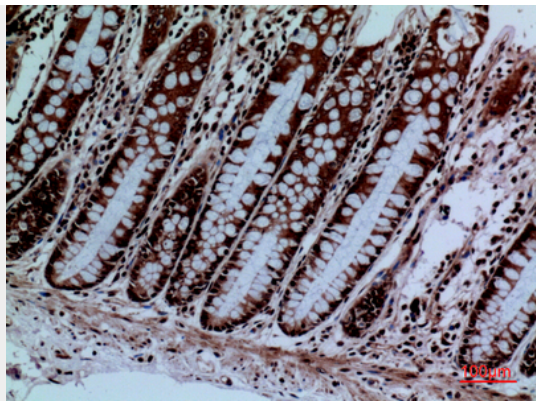
## Protein C Polyclonal Antibody - Protocols

Provided below are standard protocols that you may find useful for product applications.

- [Western Blot](#)
- [Blocking Peptides](#)
- [Dot Blot](#)
- [Immunohistochemistry](#)
- [Immunofluorescence](#)
- [Immunoprecipitation](#)
- [Flow Cytometry](#)
- [Cell Culture](#)

## Protein C Polyclonal Antibody - Images





### **Protein C Polyclonal Antibody - Background**

Protein C is a vitamin K-dependent serine protease that regulates blood coagulation by inactivating factors Va and VIIIa in the presence of calcium ions and phospholipids (PubMed:25618265). Exerts a protective effect on the endothelial cell barrier function (PubMed:25651845).