

CPN1 Antibody (N-term)
Purified Rabbit Polyclonal Antibody (Pab)
Catalog # AP7337a

Specification

CPN1 Antibody (N-term) - Product Information

Application	WB,E
Primary Accession	P15169
Reactivity	Human, Mouse
Host	Rabbit
Clonality	Polyclonal
Isotype	Rabbit IgG
Calculated MW	52286
Antigen Region	52-81

CPN1 Antibody (N-term) - Additional Information

Gene ID 1369

Other Names

Carboxypeptidase N catalytic chain, CPN, Anaphylatoxin inactivator, Arginine carboxypeptidase, Carboxypeptidase N polypeptide 1, Carboxypeptidase N small subunit, Kininase-1, Lysine carboxypeptidase, Plasma carboxypeptidase B, Serum carboxypeptidase N, SCPN, CPN1, ACBP

Target/Specificity

This CPN1 antibody is generated from rabbits immunized with a KLH conjugated synthetic peptide between 52-81 amino acids from the N-terminal region of human CPN1.

Dilution

WB~~1:1000

Format

Purified polyclonal antibody supplied in PBS with 0.09% (W/V) sodium azide. This antibody is prepared by Saturated Ammonium Sulfate (SAS) precipitation followed by dialysis against PBS.

Storage

Maintain refrigerated at 2-8°C for up to 2 weeks. For long term storage store at -20°C in small aliquots to prevent freeze-thaw cycles.

Precautions

CPN1 Antibody (N-term) is for research use only and not for use in diagnostic or therapeutic procedures.

CPN1 Antibody (N-term) - Protein Information

Name CPN1

Synonyms ACBP

Function Protects the body from potent vasoactive and inflammatory peptides containing C-terminal Arg or Lys (such as kinins or anaphylatoxins) which are released into the circulation.

Cellular Location

Secreted, extracellular space.

Tissue Location

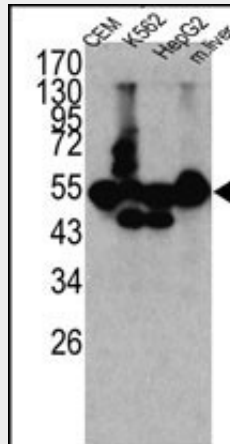
Synthesized in the liver and secreted in plasma.

CPN1 Antibody (N-term) - Protocols

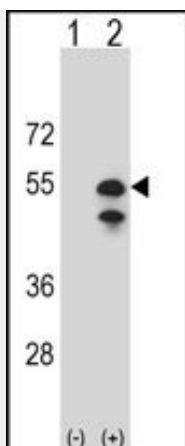
Provided below are standard protocols that you may find useful for product applications.

- [Western Blot](#)
- [Blocking Peptides](#)
- [Dot Blot](#)
- [Immunohistochemistry](#)
- [Immunofluorescence](#)
- [Immunoprecipitation](#)
- [Flow Cytometry](#)
- [Cell Culture](#)

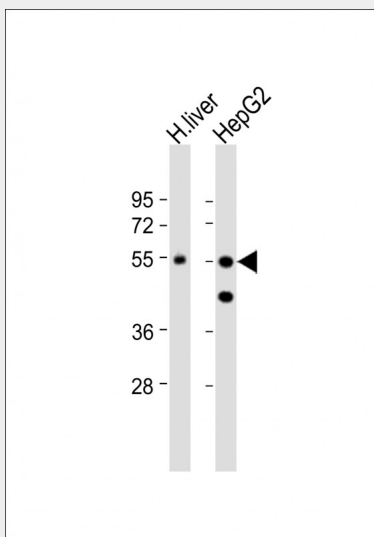
CPN1 Antibody (N-term) - Images



Western blot analysis of CPN1 antibody (N-term) (Cat.#AP7337a) in K562, CEM, HEpG2 cell line lysates and mouse liver tissue lysates (35ug/lane). CPN1 (arrow) was detected using the purified Pab.



Western blot analysis of CPN1 (arrow) using rabbit polyclonal CPN1 Antibody (N-term) (Cat. #AP7337a). 293 cell lysates (2 ug/lane) either nontransfected (Lane 1) or transiently transfected (Lane 2) with the CPN1 gene.



All lanes : Anti-CPN1 Antibody (N-term) at 1:1000 dilution Lane 1: human liver lysate Lane 2: HepG2 whole cell lysate Lysates/proteins at 20 µg per lane. Secondary Goat Anti-Rabbit IgG, (H+L), Peroxidase conjugated at 1/10000 dilution. Predicted band size : 52 kDa Blocking/Dilution buffer: 5% NFDm/TBST.

CPN1 Antibody (N-term) - Background

CPN1 is a plasma metallo-protease that cleaves basic amino acids from the C terminal of peptides and proteins. The protein is important in the regulation of peptides like kinins and anaphylatoxins, and has also been known as kininase-1 and anaphylatoxin inactivator. This protein is a tetramer comprised of two identical regulatory subunits and two identical catalytic subunits.

CPN1 Antibody (N-term) - References

- Davis,D.A., Singer,K.E. Blood 105 (12), 4561-4568 (2005)
- Riley,D.A., Tan,F. Genomics 50 (1), 105-108 (1998)
- Hendriks,D., Vingron,M. Biol. Chem. Hoppe-Seyler 374 (9), 843-849 (1993)