

CRP Polyclonal Antibody
Catalog # AP73379**Specification**

CRP Polyclonal Antibody - Product Information

Application	WB
Primary Accession	P02741
Reactivity	Human, Rat
Host	Rabbit
Clonality	Polyclonal

CRP Polyclonal Antibody - Additional Information**Gene ID** 1401**Other Names**

CRP; PTX1; C-reactive protein

Dilution

WB~~Western Blot: 1/500 - 1/2000. IHC-p: 1:100-300 ELISA: 1/20000. Not yet tested in other applications.

Format

Liquid in PBS containing 50% glycerol, 0.5% BSA and 0.09% (W/V) sodium azide.

Storage Conditions

-20°C

CRP Polyclonal Antibody - Protein Information**Name** CRP**Synonyms** PTX1**Function**

Displays several functions associated with host defense: it promotes agglutination, bacterial capsular swelling, phagocytosis and complement fixation through its calcium-dependent binding to phosphorylcholine. Can interact with DNA and histones and may scavenge nuclear material released from damaged circulating cells.

Cellular Location

Secreted.

Tissue Location

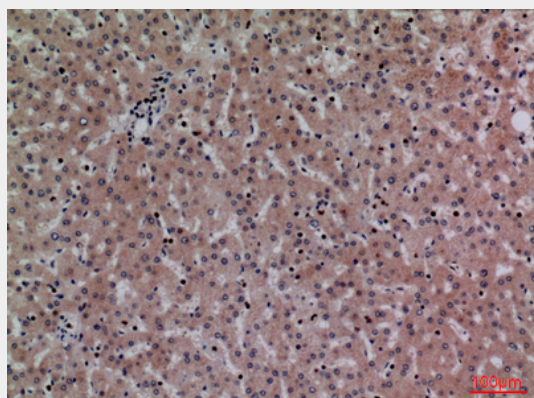
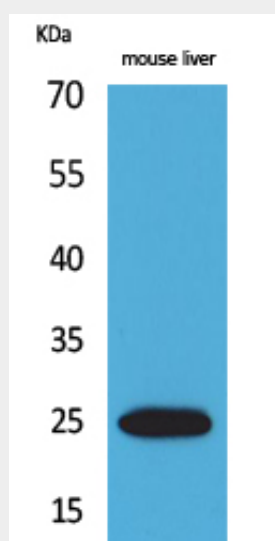
Found in plasma.

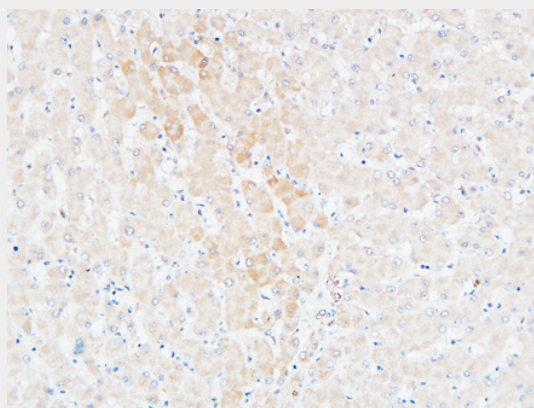
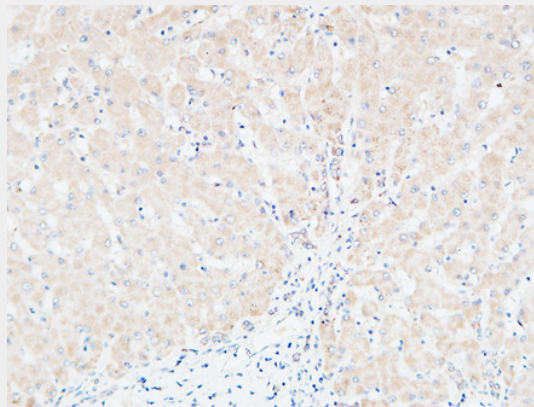
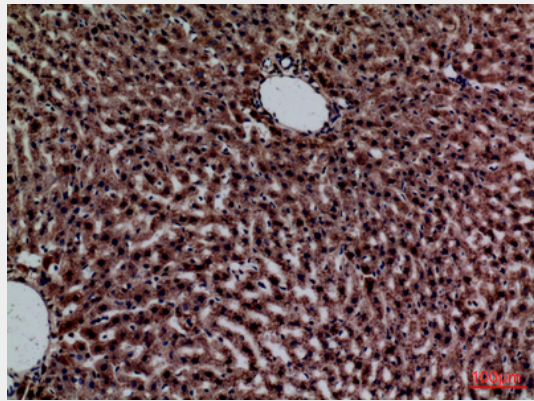
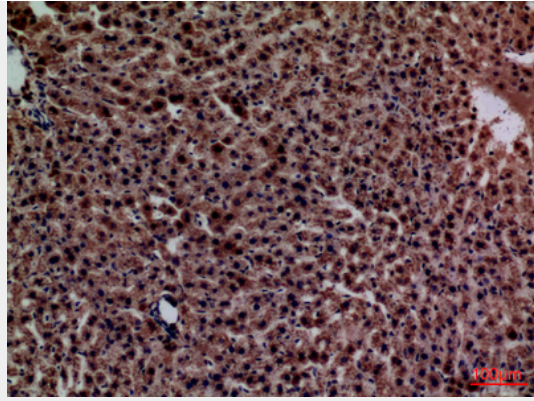
CRP Polyclonal Antibody - Protocols

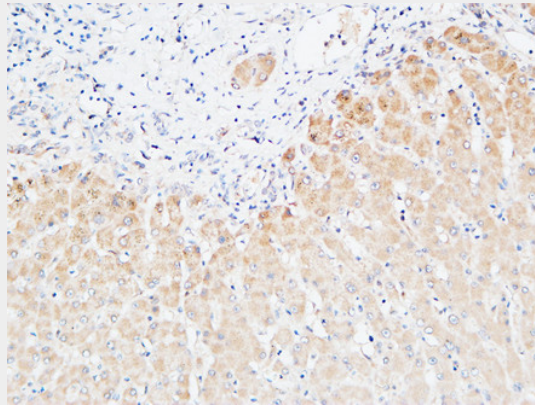
Provided below are standard protocols that you may find useful for product applications.

- [Western Blot](#)
- [Blocking Peptides](#)
- [Dot Blot](#)
- [Immunohistochemistry](#)
- [Immunofluorescence](#)
- [Immunoprecipitation](#)
- [Flow Cytometry](#)
- [Cell Culture](#)

CRP Polyclonal Antibody - Images







CRP Polyclonal Antibody - Background

Displays several functions associated with host defense: it promotes agglutination, bacterial capsular swelling, phagocytosis and complement fixation through its calcium-dependent binding to phosphorylcholine. Can interact with DNA and histones and may scavenge nuclear material released from damaged circulating cells.