

**FGF-20 Polyclonal Antibody**  
Catalog # AP73361**Specification**

---

**FGF-20 Polyclonal Antibody - Product Information**

Application	WB
Primary Accession	<a href="#">Q9NP95</a>
Reactivity	Human, Mouse, Rat
Host	Rabbit
Clonality	Polyclonal

**FGF-20 Polyclonal Antibody - Additional Information****Gene ID** 26281**Other Names**

FGF20; Fibroblast growth factor 20; FGF-20

**Dilution**

WB~~Western Blot: 1/500 - 1/2000. IHC-p: 1:100-300 ELISA: 1/20000. Not yet tested in other applications.

**Format**

Liquid in PBS containing 50% glycerol, 0.5% BSA and 0.09% (W/V) sodium azide.

**Storage Conditions**

-20°C

**FGF-20 Polyclonal Antibody - Protein Information****Name** FGF20**Function**

Neurotrophic factor that regulates central nervous development and function.

**Cellular Location**

Secreted.

**Tissue Location**

Predominantly expressed in the cerebellum.

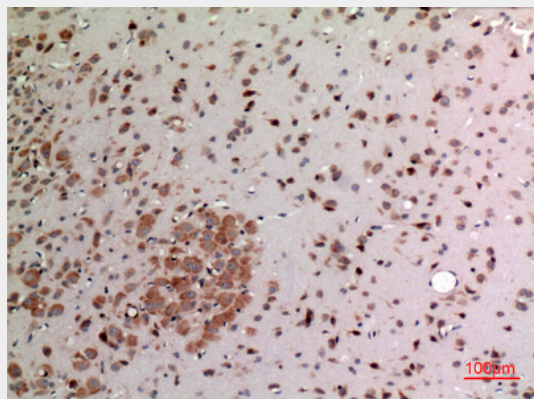
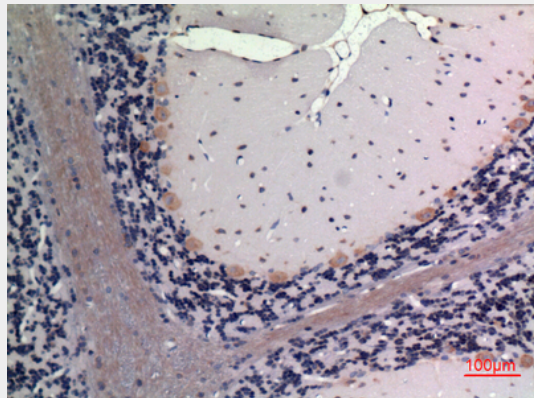
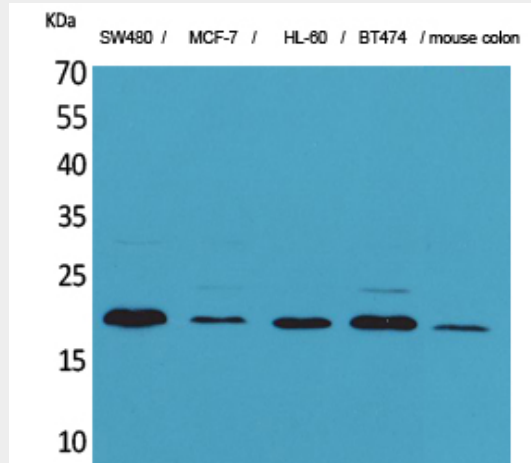
**FGF-20 Polyclonal Antibody - Protocols**

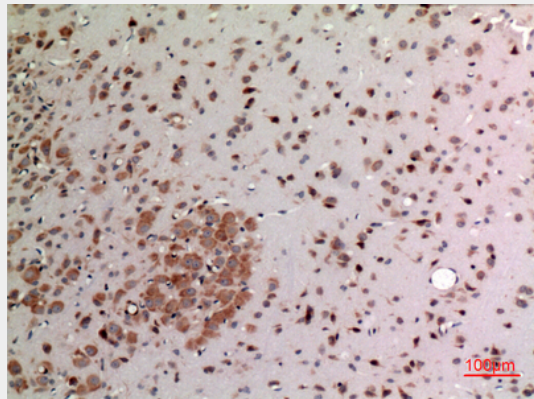
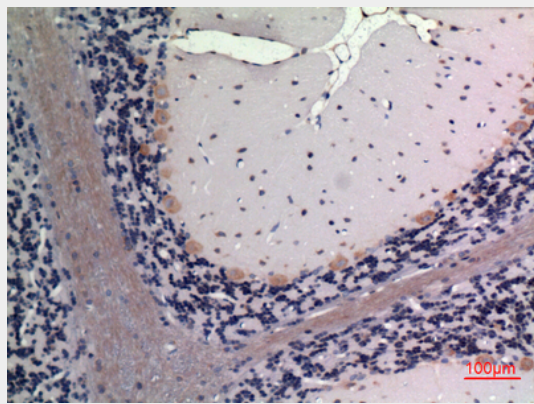
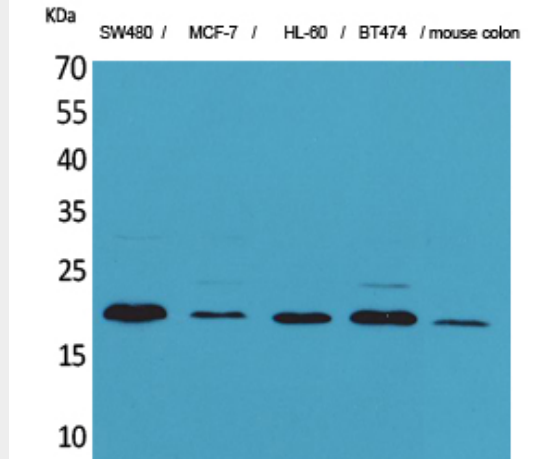
Provided below are standard protocols that you may find useful for product applications.

- [Western Blot](#)

- [Blocking Peptides](#)
- [Dot Blot](#)
- [Immunohistochemistry](#)
- [Immunofluorescence](#)
- [Immunoprecipitation](#)
- [Flow Cytometry](#)
- [Cell Culture](#)

### FGF-20 Polyclonal Antibody - Images





### FGF-20 Polyclonal Antibody - Background

Neurotrophic factor that regulates central nervous development and function.