

**PITX1 Antibody (Center)**  
**Purified Rabbit Polyclonal Antibody (Pab)**  
**Catalog # AP7334c**

**Specification**

---

**PITX1 Antibody (Center) - Product Information**

Application	<b>WB, IHC-P, FC,E</b>
Primary Accession	<a href="#">P78337</a>
Other Accession	<a href="#">P52906</a> , <a href="#">O18400</a> , <a href="#">O9I8K3</a> , <a href="#">O6OU75</a> , <a href="#">O9PWR3</a> , <a href="#">O9R0W1</a> , <a href="#">P97474</a> , <a href="#">O99697</a> , <a href="#">O9W5Z2</a> , <a href="#">O93385</a> , <a href="#">O9W751</a> , <a href="#">O99NA7</a> , <a href="#">P70314</a> , <a href="#">P56673</a>
Reactivity	<b>Human</b>
Predicted	<b>Chicken, Mouse, Rat, Xenopus, Zebrafish, Drosophila, C.Elegans</b>
Host	<b>Rabbit</b>
Clonality	<b>Polyclonal</b>
Isotype	<b>Rabbit IgG</b>
Antigen Region	<b>123-150</b>

**PITX1 Antibody (Center) - Additional Information**

**Gene ID** 5307

**Other Names**

Pituitary homeobox 1, Hindlimb-expressed homeobox protein backfoot, Homeobox protein PITX1, Paired-like homeodomain transcription factor 1, PITX1, BFT, PTX1

**Target/Specificity**

This PITX1 antibody is generated from rabbits immunized with a KLH conjugated synthetic peptide between 123-150 amino acids from the Central region of human PITX1.

**Dilution**

WB~~1:1000  
IHC-P~~1:50~100  
FC~~1:10~50

**Format**

Purified polyclonal antibody supplied in PBS with 0.09% (W/V) sodium azide. This antibody is prepared by Saturated Ammonium Sulfate (SAS) precipitation followed by dialysis against PBS.

**Storage**

Maintain refrigerated at 2-8°C for up to 2 weeks. For long term storage store at -20°C in small aliquots to prevent freeze-thaw cycles.

**Precautions**

PITX1 Antibody (Center) is for research use only and not for use in diagnostic or therapeutic procedures.

**PITX1 Antibody (Center) - Protein Information**

**Name** PITX1

**Synonyms** BFT, PTX1

**Function** Sequence-specific transcription factor that binds gene promoters and activates their transcription. May play a role in the development of anterior structures, and in particular, the brain and facies and in specifying the identity or structure of hindlimb.

**Cellular Location**

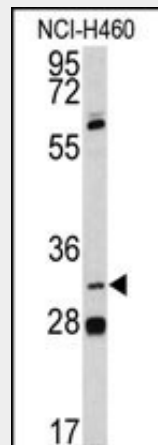
Nucleus.

### **PITX1 Antibody (Center) - Protocols**

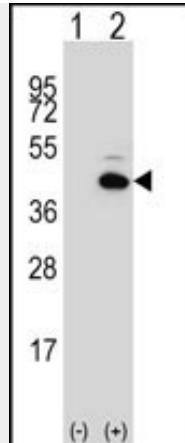
Provided below are standard protocols that you may find useful for product applications.

- [Western Blot](#)
- [Blocking Peptides](#)
- [Dot Blot](#)
- [Immunohistochemistry](#)
- [Immunofluorescence](#)
- [Immunoprecipitation](#)
- [Flow Cytometry](#)
- [Cell Culture](#)

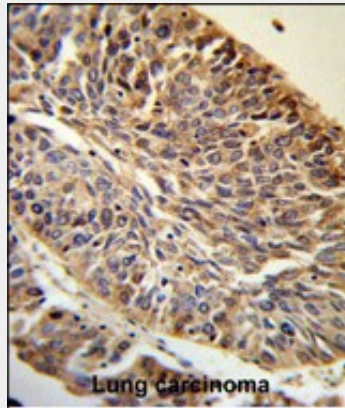
### **PITX1 Antibody (Center) - Images**



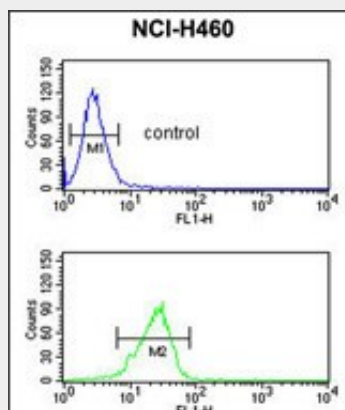
Western blot analysis of PITX1 antibody (Center) (Cat.#AP7334c) in NCI-H460 cell line lysates (35ug/lane). PITX1 (arrow) was detected using the purified Pab.



Western blot analysis of PITX1 (arrow) using rabbit polyclonal PITX1 Antibody (Center) (Cat. #AP7334c). 293 cell lysates (2 ug/lane) either nontransfected (Lane 1) or transiently transfected (Lane 2) with the PITX1 gene.



PITX1 Antibody (Center) (RB18913) IHC analysis in formalin fixed and paraffin embedded human Lung carcinoma followed by peroxidase conjugation of the secondary antibody and DAB staining. This data demonstrates the use of the PITX1 Antibody (Center) for immunohistochemistry. Clinical relevance has not been evaluated.



PITX1 Antibody (Center) (Cat. #AP7334c) flow cytometric analysis of NCI-H460 cells (bottom histogram) compared to a negative control cell (top histogram). FITC-conjugated goat-anti-rabbit secondary antibodies were used for the analysis.

### **PITX1 Antibody (Center) - Background**

PITX1 is a member of the RIEG/PITX homeobox family, which is in the bicoid class of homeodomain

proteins. Members of this family are involved in organ development and left-right asymmetry. This protein acts as a transcriptional regulator involved in basal and hormone-regulated activity of prolactin.

#### **PITX1 Antibody (Center) - References**

- Grimminger,P., Ling,F.C. Anticancer Res. 29 (4), 1281-1286 (2009)  
Gurnett,C.A., Alaei,F. Am. J. Hum. Genet. 83 (5), 616-622 (2008)  
Philippi,A., Tores,F. BMC Med. Genet. 8, 74 (2007)  
Shang,J., Li,X. Genomics 40 (1), 108-113 (1997)