

**TALL-1 Polyclonal Antibody**  
Catalog # AP73349**Specification**

---

**TALL-1 Polyclonal Antibody - Product Information**

Application	WB
Primary Accession	<a href="#">O9Y275</a>
Reactivity	Human, Mouse
Host	Rabbit
Clonality	Polyclonal

**TALL-1 Polyclonal Antibody - Additional Information****Gene ID** 10673**Other Names**

TNFSF13B; BAFF; BLYS; TALL1; TNFSF20; ZTNF4; Tumor necrosis factor ligand superfamily member 13B; B lymphocyte stimulator; BLyS; B-cell-activating factor; BAFF; Dendritic cell-derived TNF-like molecule; TNF- and APOL-related leukocyte expressed ligand 1; TALL-1; CD257

**Dilution**

WB~~Western Blot: 1/500 - 1/2000. IHC-p: 1:100-300 ELISA: 1/20000. Not yet tested in other applications.

**Format**

Liquid in PBS containing 50% glycerol, 0.5% BSA and 0.09% (W/V) sodium azide.

**Storage Conditions**

-20°C

**TALL-1 Polyclonal Antibody - Protein Information****Name** TNFSF13B**Synonyms** BAFF, BLYS, TALL1, TNFSF20, ZTNF4**Function**

Cytokine that binds to TNFRSF13B/TACI and TNFRSF17/BCMA. TNFSF13/APRIL binds to the same 2 receptors. Together, they form a 2 ligands -2 receptors pathway involved in the stimulation of B- and T- cell function and the regulation of humoral immunity. A third B-cell specific BAFF-receptor (BAFFR/BR3) promotes the survival of mature B- cells and the B-cell response.

**Cellular Location**

Cell membrane; Single-pass type II membrane protein

**Tissue Location**

Abundantly expressed in peripheral blood Leukocytes and is specifically expressed in monocytes and macrophages. Also found in the spleen, lymph node, bone marrow, T-cells and dendritic cells.

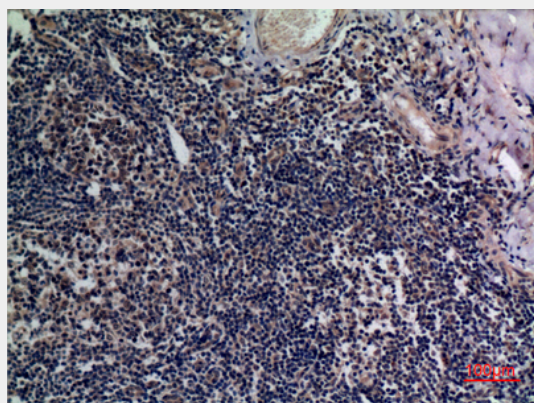
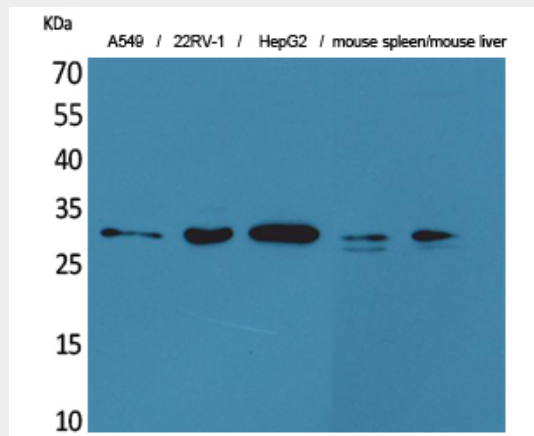
A lower expression seen in placenta, heart, lung, fetal liver, thymus, and pancreas. Isoform 2 is expressed in many myeloid cell lines

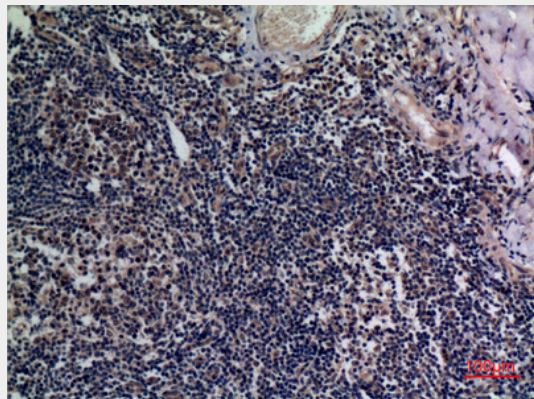
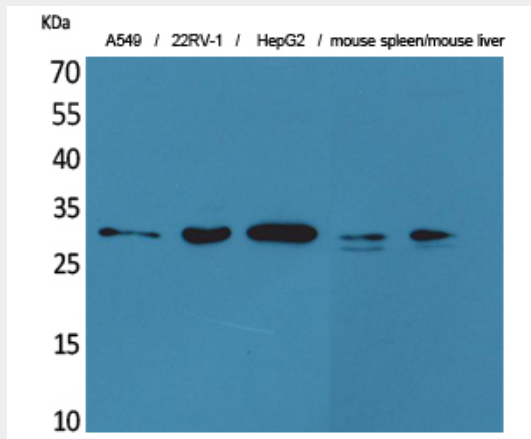
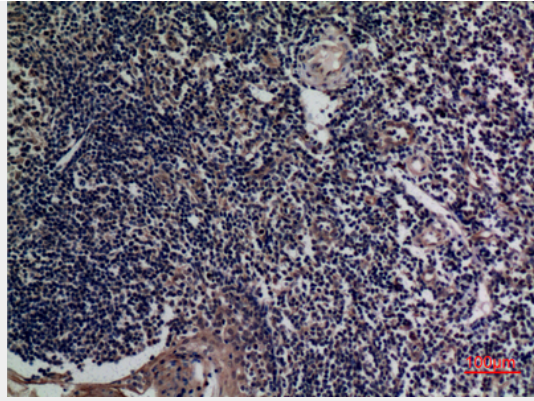
### TALL-1 Polyclonal Antibody - Protocols

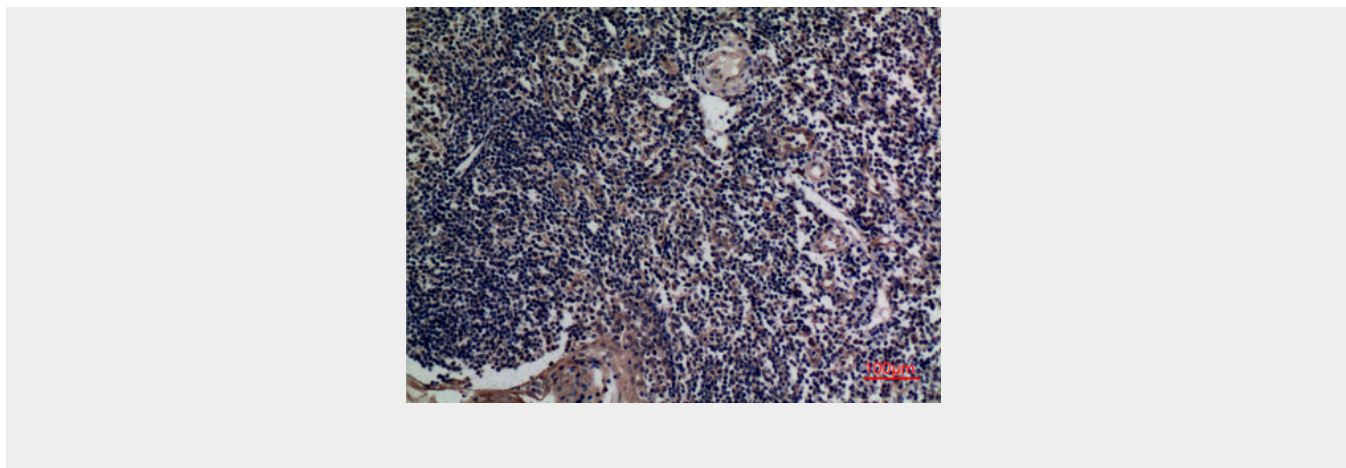
Provided below are standard protocols that you may find useful for product applications.

- [Western Blot](#)
- [Blocking Peptides](#)
- [Dot Blot](#)
- [Immunohistochemistry](#)
- [Immunofluorescence](#)
- [Immunoprecipitation](#)
- [Flow Cytometry](#)
- [Cell Culture](#)

### TALL-1 Polyclonal Antibody - Images







### **TALL-1 Polyclonal Antibody - Background**

Cytokine that binds to TNFRSF13B/TACI and TNFRSF17/BCMA. TNFSF13/APRIL binds to the same 2 receptors. Together, they form a 2 ligands -2 receptors pathway involved in the stimulation of B- and T-cell function and the regulation of humoral immunity. A third B-cell specific BAFF-receptor (BAFFR/BR3) promotes the survival of mature B-cells and the B-cell response.