

**ET-1 Polyclonal Antibody**  
Catalog # AP73330**Specification**

---

**ET-1 Polyclonal Antibody - Product Information**

Application	IHC
Primary Accession	<a href="#">P05305</a>
Reactivity	Human
Host	Rabbit
Clonality	Polyclonal

**ET-1 Polyclonal Antibody - Additional Information****Gene ID** 1906**Other Names**

EDN1; Endothelin-1; Preproendothelin-1; PPET1

**Dilution**

IHC~~IHC-p: 100-300. Western Blot: 1/500 - 1/2000. ELISA: 1/20000. Not yet tested in other applications.

**Format**

Liquid in PBS containing 50% glycerol, 0.5% BSA and 0.09% (W/V) sodium azide.

**Storage Conditions**

-20°C

**ET-1 Polyclonal Antibody - Protein Information****Name** EDN1**Function**

Endothelins are endothelium-derived vasoconstrictor peptides (By similarity). Probable ligand for G-protein coupled receptors EDNRA and EDNRB which activates PTK2B, BCAR1, BCAR3 and, GTPases RAP1 and RHOA cascade in glomerular mesangial cells (PubMed:<a href="http://www.uniprot.org/citations/19086031" target="\_blank">19086031</a>). Also binds the DEAR/FBXW7-AS1 receptor (PubMed:<a href="http://www.uniprot.org/citations/17446437" target="\_blank">17446437</a>). Promotes mesenteric arterial wall remodeling via activation of ROCK signaling and subsequent colocalization of NFATC3 with F-actin filaments (By similarity). NFATC3 then translocates to the nucleus where it subsequently promotes the transcription of the smooth muscle hypertrophy and differentiation marker ACTA2 (By similarity).

**Cellular Location**

Secreted.

**Tissue Location**

Expressed in lung, placental stem villi vessels and in cultured placental vascular smooth muscle

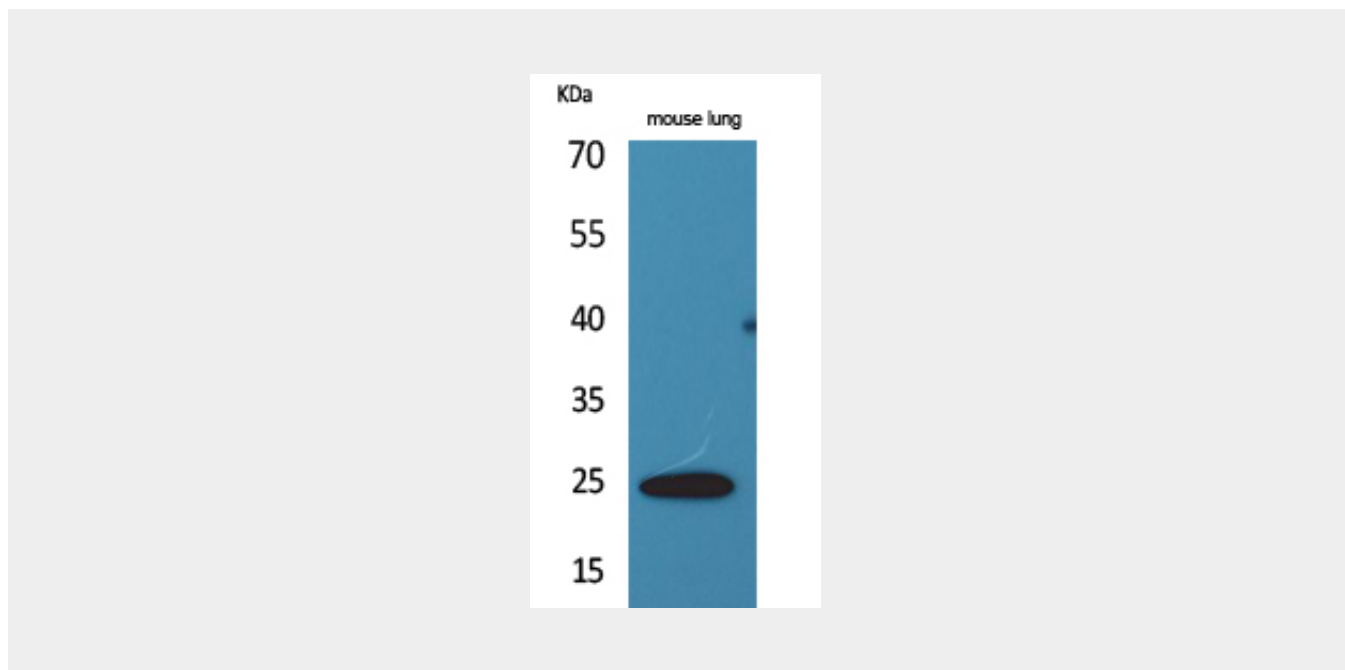
cells

### ET-1 Polyclonal Antibody - Protocols

Provided below are standard protocols that you may find useful for product applications.

- [Western Blot](#)
- [Blocking Peptides](#)
- [Dot Blot](#)
- [Immunohistochemistry](#)
- [Immunofluorescence](#)
- [Immunoprecipitation](#)
- [Flow Cytometry](#)
- [Cell Culture](#)

### ET-1 Polyclonal Antibody - Images



### ET-1 Polyclonal Antibody - Background

Endothelins are endothelium-derived vasoconstrictor peptides.