

CD56 Polyclonal Antibody
Catalog # AP73329**Specification**

CD56 Polyclonal Antibody - Product Information

Application	WB
Primary Accession	P13591
Reactivity	Human
Host	Rabbit
Clonality	Polyclonal

CD56 Polyclonal Antibody - Additional Information**Gene ID** 4684**Other Names**

NCAM1; NCAM; Neural cell adhesion molecule 1; N-CAM-1; NCAM-1; CD56

Dilution

WB~~Western Blot: 1/500 - 1/2000. ELISA: 1/20000. Not yet tested in other applications.

Format

Liquid in PBS containing 50% glycerol, 0.5% BSA and 0.09% (W/V) sodium azide.

Storage Conditions

-20°C

CD56 Polyclonal Antibody - Protein Information**Name** NCAM1 ([HGNC:7656](#))**Synonyms** NCAM**Function**

This protein is a cell adhesion molecule involved in neuron- neuron adhesion, neurite fasciculation, outgrowth of neurites, etc. (Microbial infection) Acts as a receptor for Zika virus.

Cellular Location

[Isoform 1]: Cell membrane; Single-pass type I membrane protein [Isoform 3]: Cell membrane; Lipid-anchor, GPI- anchor [Isoform 5]: Secreted.

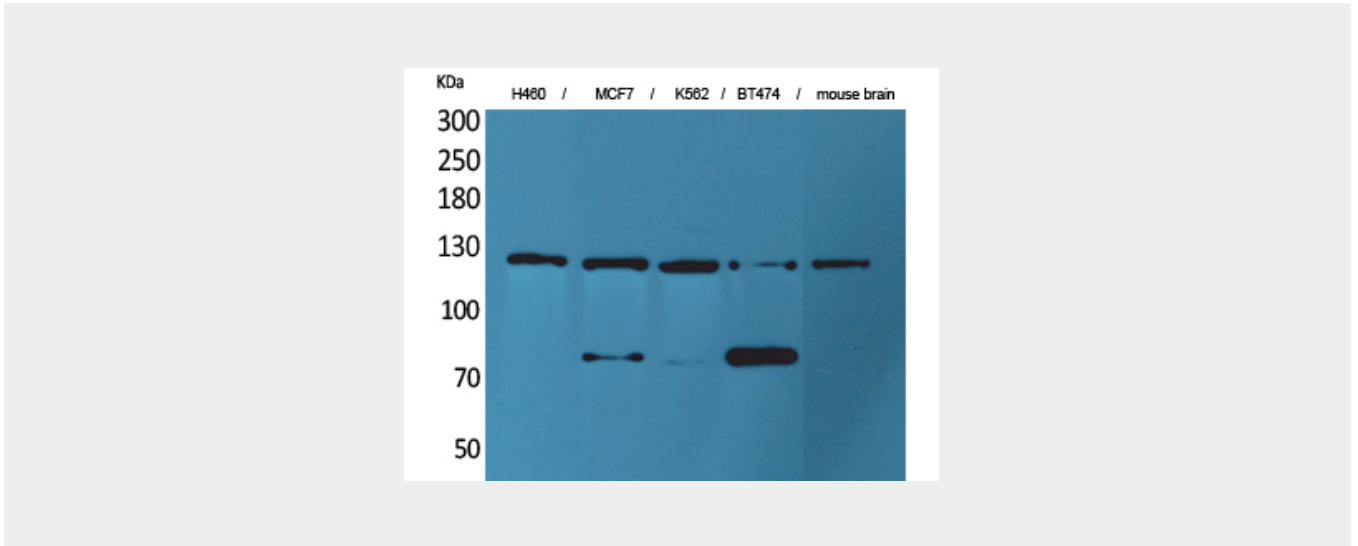
CD56 Polyclonal Antibody - Protocols

Provided below are standard protocols that you may find useful for product applications.

- [Western Blot](#)

- [Blocking Peptides](#)
- [Dot Blot](#)
- [Immunohistochemistry](#)
- [Immunofluorescence](#)
- [Immunoprecipitation](#)
- [Flow Cytometry](#)
- [Cell Culture](#)

CD56 Polyclonal Antibody - Images



CD56 Polyclonal Antibody - Background

This protein is a cell adhesion molecule involved in neuron-neuron adhesion, neurite fasciculation, outgrowth of neurites, etc.