

**AFP Polyclonal Antibody**  
Catalog # AP73323**Specification**

---

**AFP Polyclonal Antibody - Product Information**

Application	<b>WB</b>
Primary Accession	<a href="#">P02771</a>
Reactivity	<b>Human</b>
Host	<b>Rabbit</b>
Clonality	<b>Polyclonal</b>

**AFP Polyclonal Antibody - Additional Information****Gene ID** 174**Other Names**

AFP; HPAFP; Alpha-fetoprotein; Alpha-1-fetoprotein; Alpha-fetoglobulin

**Dilution**

WB~~Western Blot: 1/500 - 1/2000. IHC-p: 1:100-300 ELISA: 1/20000. Not yet tested in other applications.

**Format**

Liquid in PBS containing 50% glycerol, 0.5% BSA and 0.09% (W/V) sodium azide.

**Storage Conditions**

-20°C

**AFP Polyclonal Antibody - Protein Information****Name** AFP**Synonyms** HPAFP**Function**

Binds copper, nickel, and fatty acids as well as, and bilirubin less well than, serum albumin. Only a small percentage (less than 2%) of the human AFP shows estrogen-binding properties.

**Cellular Location**

Secreted.

**Tissue Location**

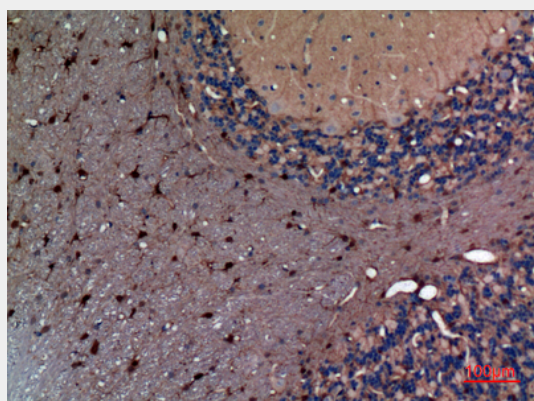
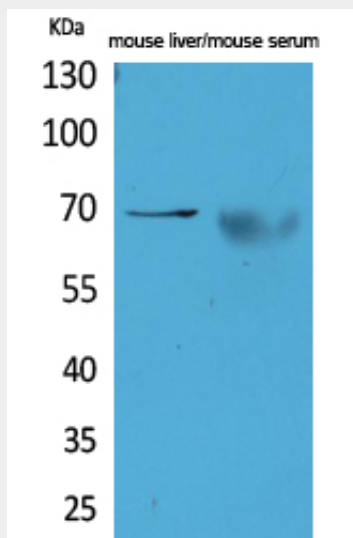
Plasma. Synthesized by the fetal liver and yolk sac

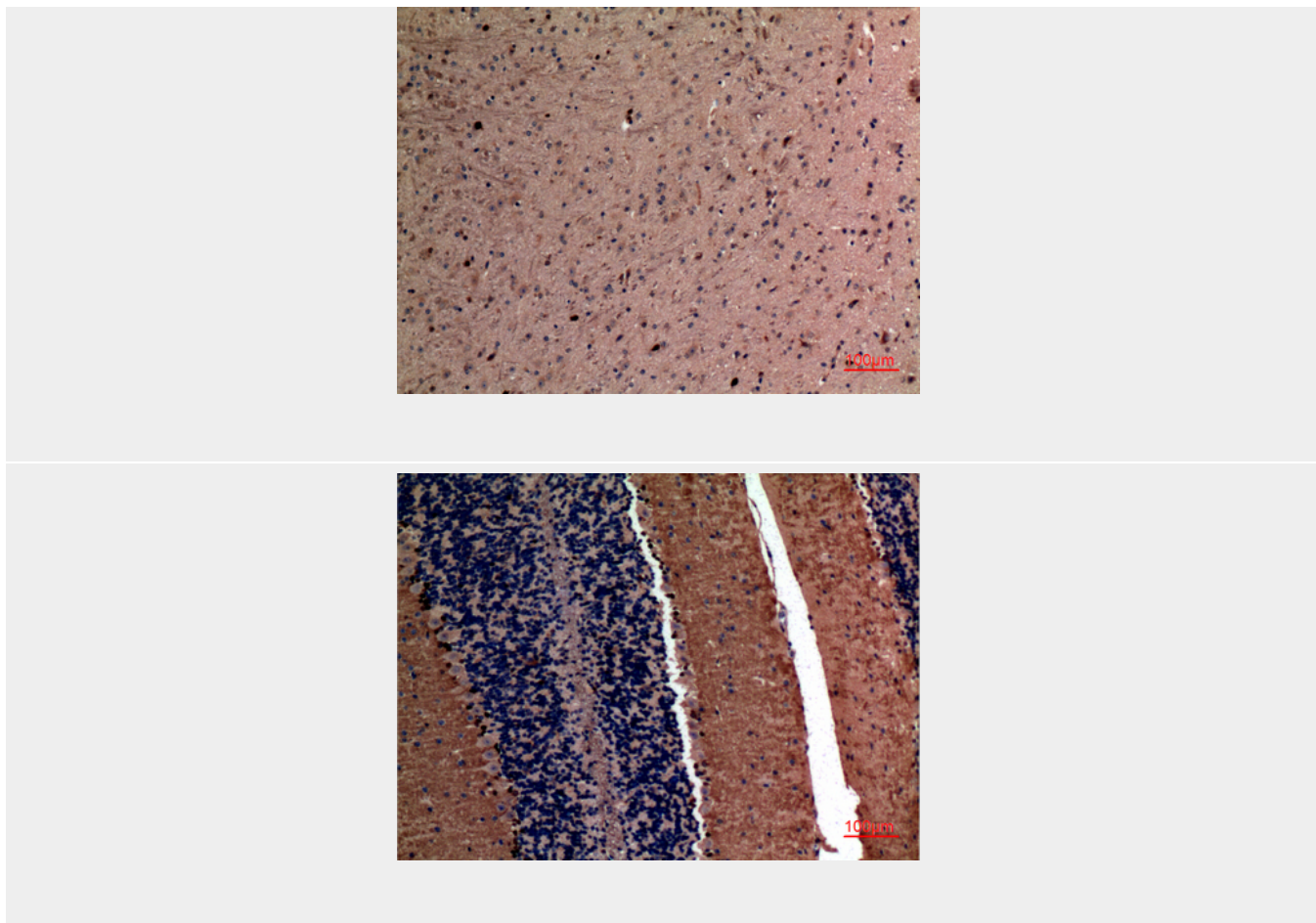
**AFP Polyclonal Antibody - Protocols**

Provided below are standard protocols that you may find useful for product applications.

- [Western Blot](#)
- [Blocking Peptides](#)
- [Dot Blot](#)
- [Immunohistochemistry](#)
- [Immunofluorescence](#)
- [Immunoprecipitation](#)
- [Flow Cytometry](#)
- [Cell Culture](#)

#### AFP Polyclonal Antibody - Images





### **AFP Polyclonal Antibody - Background**

Binds copper, nickel, and fatty acids as well as, and bilirubin less well than, serum albumin. Only a small percentage (less than 2%) of the human AFP shows estrogen-binding properties.