

L-Selectin Polyclonal Antibody
Catalog # AP73313**Specification****L-Selectin Polyclonal Antibody - Product Information**

Application	WB
Primary Accession	P14151
Reactivity	Human, Mouse, Rat
Host	Rabbit
Clonality	Polyclonal

L-Selectin Polyclonal Antibody - Additional Information

Gene ID 6402

Other Names

SELL; LNHR; LYAM1; L-selectin; CD62 antigen-like family member L; Leukocyte adhesion molecule 1; LAM-1; Leukocyte surface antigen Leu-8; Leukocyte-endothelial cell adhesion molecule 1; LECAM1; Lymph node homing receptor; TQ1; gp90-MEL; CD62L

Dilution

WB~~Western Blot: 1/500 - 1/2000. IHC-p: 1:100-300 ELISA: 1/20000. Not yet tested in other applications.

Format

Liquid in PBS containing 50% glycerol, 0.5% BSA and 0.09% (W/V) sodium azide.

Storage Conditions

-20°C

L-Selectin Polyclonal Antibody - Protein Information

Name SELL

Synonyms LNHR, LYAM1

Function

Calcium-dependent lectin that mediates cell adhesion by binding to glycoproteins on neighboring cells (PubMed: [12403782](http://www.uniprot.org/citations/12403782), PubMed: [28011641](http://www.uniprot.org/citations/28011641), PubMed: [28489325](http://www.uniprot.org/citations/28489325)). Mediates the adherence of lymphocytes to endothelial cells of high endothelial venules in peripheral lymph nodes. Promotes initial tethering and rolling of leukocytes in endothelia (PubMed: [12403782](http://www.uniprot.org/citations/12403782), PubMed: [28011641](http://www.uniprot.org/citations/28011641)).

Cellular Location

Cell membrane; Single-pass type I membrane protein

Tissue Location

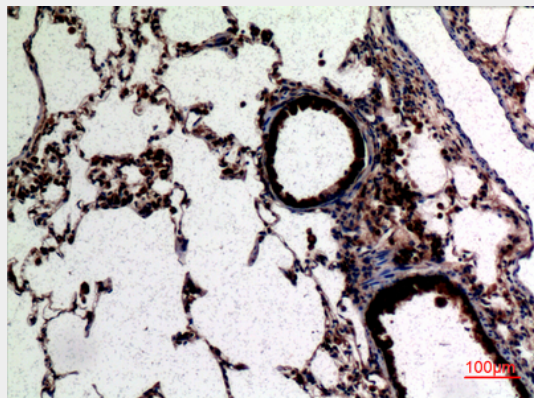
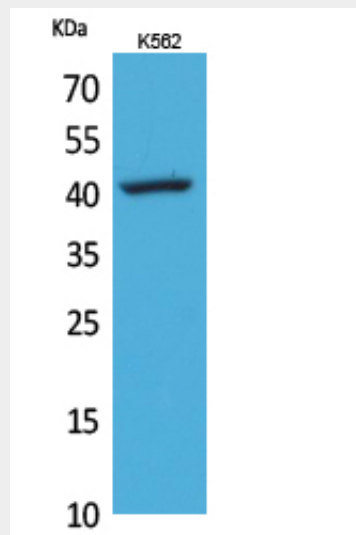
Expressed in B-cell lines and T-lymphocytes.

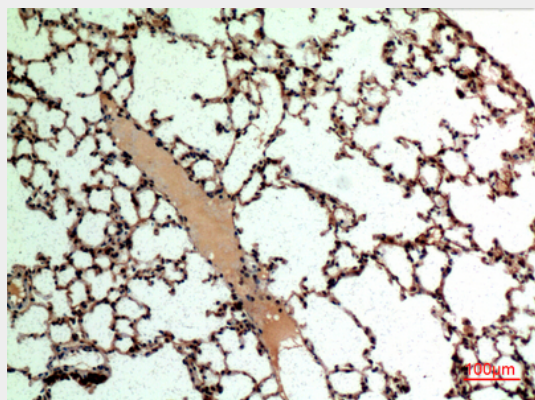
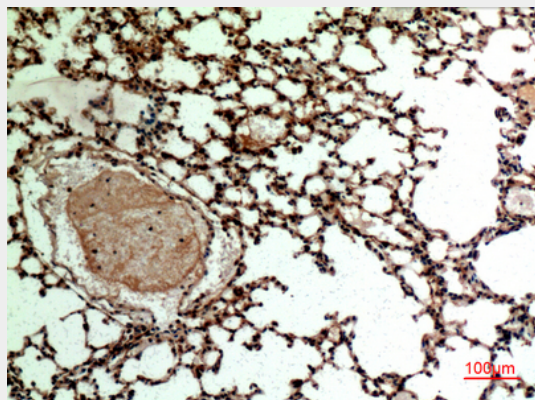
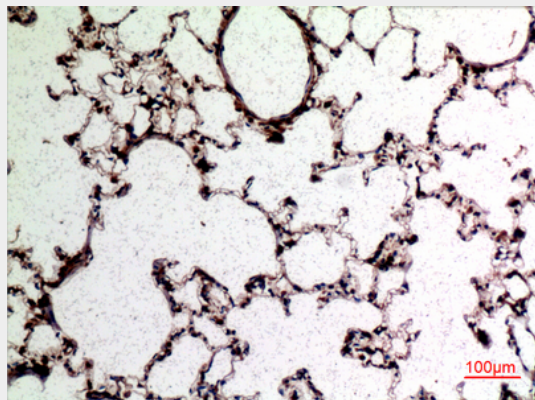
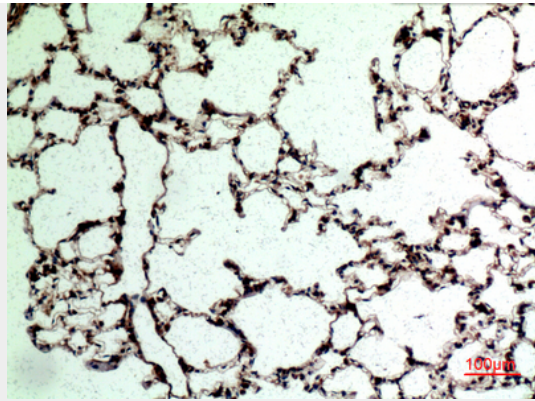
L-Selectin Polyclonal Antibody - Protocols

Provided below are standard protocols that you may find useful for product applications.

- [Western Blot](#)
- [Blocking Peptides](#)
- [Dot Blot](#)
- [Immunohistochemistry](#)
- [Immunofluorescence](#)
- [Immunoprecipitation](#)
- [Flow Cytometry](#)
- [Cell Culture](#)

L-Selectin Polyclonal Antibody - Images





L-Selectin Polyclonal Antibody - Background

Calcium-dependent lectin that mediates cell adhesion by binding to glycoproteins on neighboring cells (PubMed:12403782, PubMed:28489325, PubMed:28011641). Mediates the adherence of lymphocytes to endothelial cells of high endothelial venules in peripheral lymph nodes. Promotes initial tethering and rolling of leukocytes in endothelia (PubMed:12403782, PubMed:28011641).