

Hepassocin Polyclonal Antibody
Catalog # AP73310**Specification****Hepassocin Polyclonal Antibody - Product Information**

Application	WB
Primary Accession	Q08830
Reactivity	Human, Mouse, Rat
Host	Rabbit
Clonality	Polyclonal

Hepassocin Polyclonal Antibody - Additional Information**Gene ID** 2267**Other Names**

FGL1; HFREP1; Fibrinogen-like protein 1; HP-041; Hepassocin; Hepatocyte-derived fibrinogen-related protein 1; HFREP-1; Liver fibrinogen-related protein 1; LFIRE-1

Dilution

WB~~Western Blot: 1/500 - 1/2000. IHC-p: 1:100-300 ELISA: 1/20000. Not yet tested in other applications.

Format

Liquid in PBS containing 50% glycerol, 0.5% BSA and 0.09% (W/V) sodium azide.

Storage Conditions

-20°C

Hepassocin Polyclonal Antibody - Protein Information**Name** FGL1 {ECO:0000303|PubMed:18039467, ECO:0000312|HGNC:HGNC:3695}**Function**

Immune suppressive molecule that inhibits antigen-specific T- cell activation by acting as a major ligand of LAG3 (PubMed:30580966). Responsible for LAG3 T-cell inhibitory function (PubMed:30580966). Binds LAG3 independently from MHC class II (MHC-II) (PubMed:30580966). Secreted by, and promotes growth of, hepatocytes (PubMed:11470158, PubMed:19880967).

Cellular Location

Secreted. Note=Secreted in the blood plasma

Tissue Location

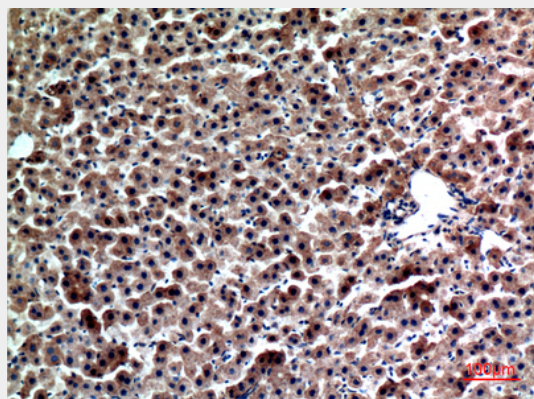
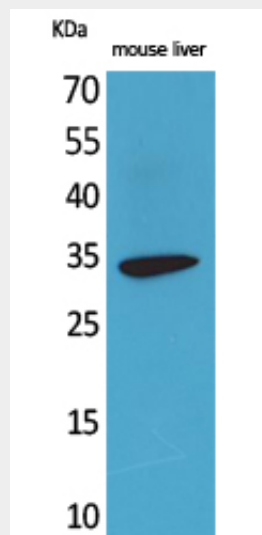
Under normal conditions, liver-specific.

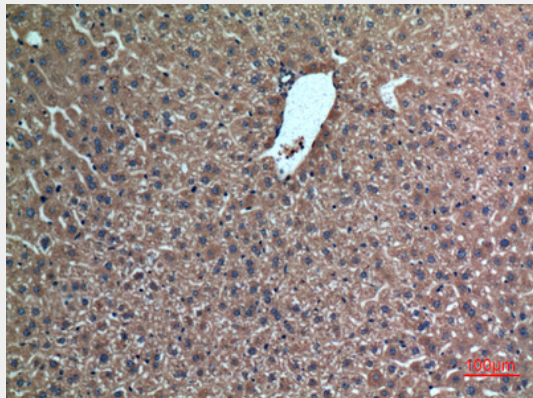
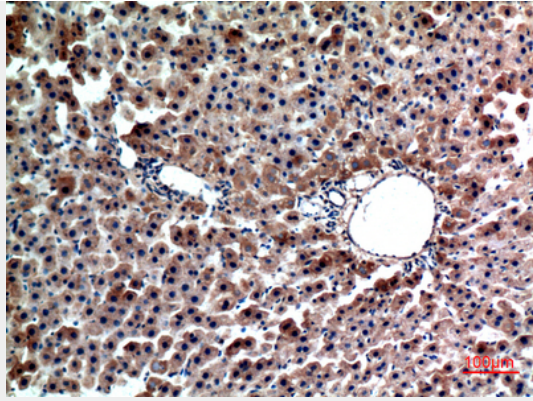
Hepassocin Polyclonal Antibody - Protocols

Provided below are standard protocols that you may find useful for product applications.

- [Western Blot](#)
- [Blocking Peptides](#)
- [Dot Blot](#)
- [Immunohistochemistry](#)
- [Immunofluorescence](#)
- [Immunoprecipitation](#)
- [Flow Cytometry](#)
- [Cell Culture](#)

Hepassocin Polyclonal Antibody - Images





Hepassocin Polyclonal Antibody - Background

Has hepatocyte mitogenic activity.