

DPP7 Polyclonal Antibody
Catalog # AP73308**Specification**

DPP7 Polyclonal Antibody - Product Information

Application	WB
Primary Accession	Q9UHL4
Reactivity	Human
Host	Rabbit
Clonality	Polyclonal

DPP7 Polyclonal Antibody - Additional Information**Gene ID** 29952**Other Names**

DPP7; DPP2; QPP; Dipeptidyl peptidase 2; Dipeptidyl aminopeptidase II; Dipeptidyl peptidase 7; Dipeptidyl peptidase II; DPP II; Quiescent cell proline dipeptidase

Dilution

WB~~Western Blot: 1/500 - 1/2000. IHC-p: 1:100-300 ELISA: 1/20000. Not yet tested in other applications.

Format

Liquid in PBS containing 50% glycerol, 0.5% BSA and 0.09% (W/V) sodium azide.

Storage Conditions

-20°C

DPP7 Polyclonal Antibody - Protein Information**Name** DPP7**Synonyms** DPP2, QPP**Function**

Plays an important role in the degradation of some oligopeptides.

Cellular Location

Lysosome. Cytoplasmic vesicle. Secreted

Tissue Location

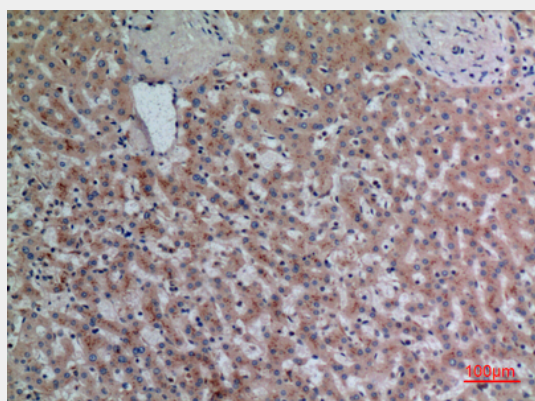
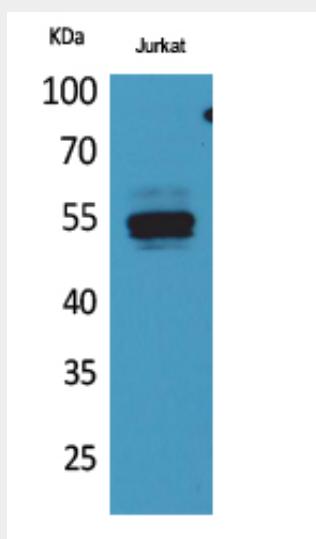
Detected in seminal plasma (at protein level).

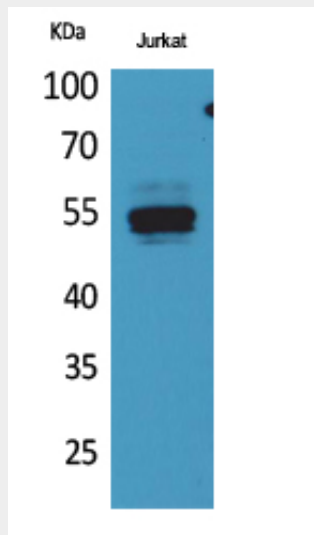
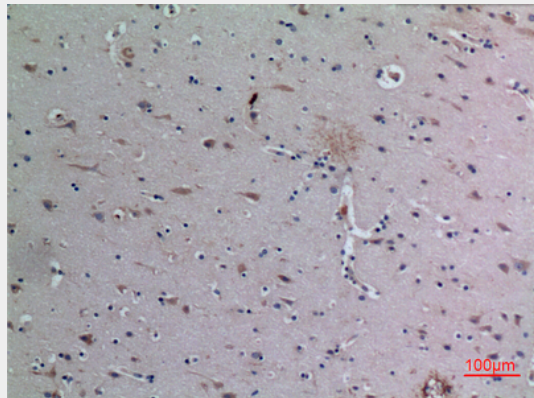
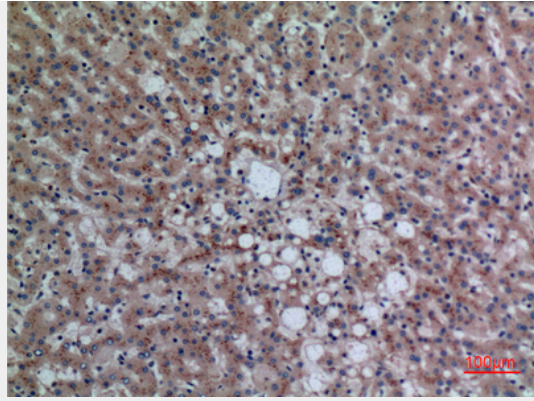
DPP7 Polyclonal Antibody - Protocols

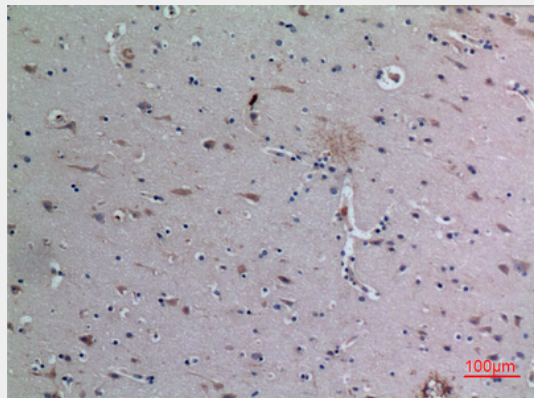
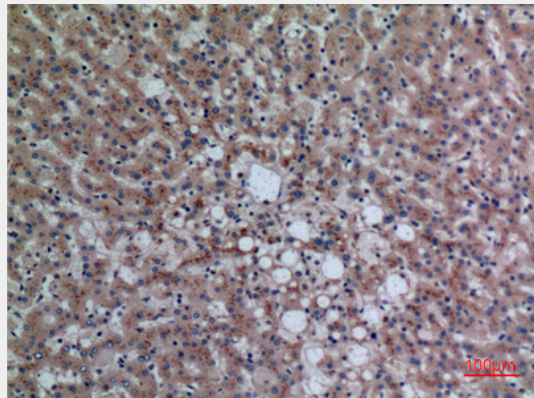
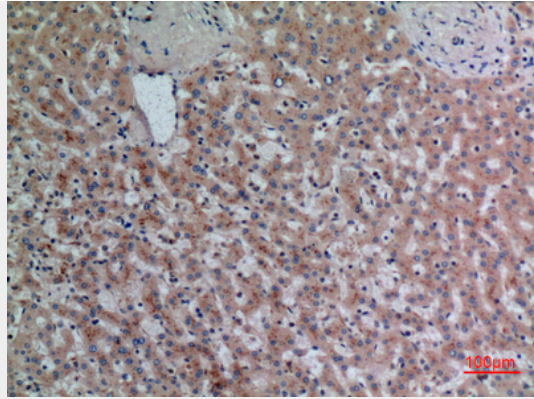
Provided below are standard protocols that you may find useful for product applications.

- [Western Blot](#)
- [Blocking Peptides](#)
- [Dot Blot](#)
- [Immunohistochemistry](#)
- [Immunofluorescence](#)
- [Immunoprecipitation](#)
- [Flow Cytometry](#)
- [Cell Culture](#)

DPP7 Polyclonal Antibody - Images







DPP7 Polyclonal Antibody - Background

Plays an important role in the degradation of some oligopeptides.