

**Chymase Polyclonal Antibody**  
Catalog # AP73306**Specification**

---

**Chymase Polyclonal Antibody - Product Information**

Application	<b>WB</b>
Primary Accession	<a href="#">P23946</a>
Reactivity	<b>Human</b>
Host	<b>Rabbit</b>
Clonality	<b>Polyclonal</b>

**Chymase Polyclonal Antibody - Additional Information****Gene ID** 1215**Other Names**

CMA1; CYH; CYM; Chymase; Alpha-chymase; Mast cell protease I

**Dilution**

WB~~Western Blot: 1/500 - 1/2000. ELISA: 1/20000. Not yet tested in other applications.

**Format**

Liquid in PBS containing 50% glycerol, 0.5% BSA and 0.09% (W/V) sodium azide.

**Storage Conditions**

-20°C

**Chymase Polyclonal Antibody - Protein Information****Name** CMA1**Synonyms** CYH, CYM**Function**

Major secreted protease of mast cells with suspected roles in vasoactive peptide generation, extracellular matrix degradation, and regulation of gland secretion.

**Cellular Location**

Secreted. Cytoplasmic granule. Note=Mast cell granules

**Tissue Location**

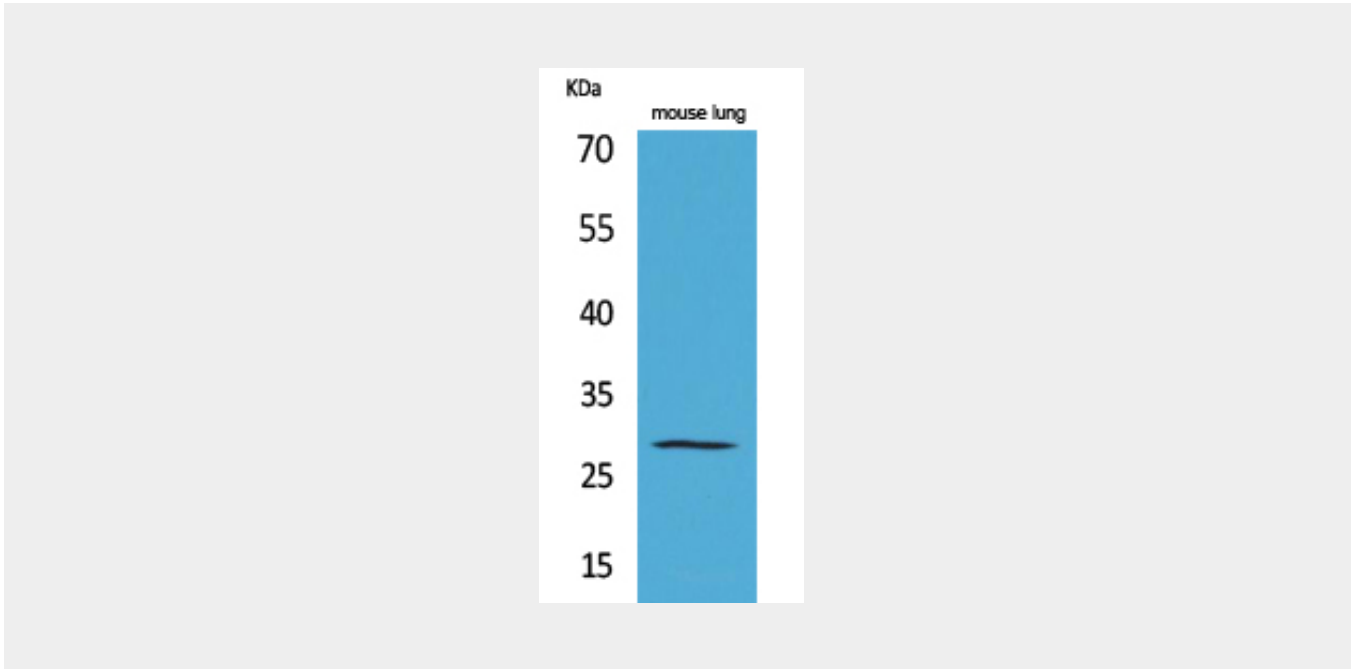
Mast cells in lung, heart, skin and placenta. Expressed in both normal skin and in urticaria pigmentosa lesions

**Chymase Polyclonal Antibody - Protocols**

Provided below are standard protocols that you may find useful for product applications.

- [Western Blot](#)
- [Blocking Peptides](#)
- [Dot Blot](#)
- [Immunohistochemistry](#)
- [Immunofluorescence](#)
- [Immunoprecipitation](#)
- [Flow Cytometry](#)
- [Cell Culture](#)

### Chymase Polyclonal Antibody - Images



### Chymase Polyclonal Antibody - Background

Major secreted protease of mast cells with suspected roles in vasoactive peptide generation, extracellular matrix degradation, and regulation of gland secretion.