

α-SMA Polyclonal Antibody Catalog # AP73304

Specification

α-SMA Polyclonal Antibody - Product Information

| | |
|-------------------|--------------------------|
| Application | WB |
| Primary Accession | P68032 |
| Reactivity | Human, Mouse, Rat |
| Host | Rabbit |
| Clonality | Polyclonal |

α-SMA Polyclonal Antibody - Additional Information

Gene ID 70

Other Names

ACTC1; ACTC; Actin, alpha cardiac muscle 1; Alpha-cardiac actin; ACTA1; ACTA; Actin, alpha skeletal muscle; Alpha-actin-1; ACTA2; ACTSA; ACTVS; GIG46;

Dilution

WB~~Western Blot: 1/500 - 1/2000. IHC-p: 1:100-300 ELISA: 1/20000. Not yet tested in other applications.

Format

Liquid in PBS containing 50% glycerol, 0.5% BSA and 0.09% (W/V) sodium azide.

Storage Conditions

-20°C

α-SMA Polyclonal Antibody - Protein Information

Name ACTC1

Synonyms ACTC

Function

Actins are highly conserved proteins that are involved in various types of cell motility and are ubiquitously expressed in all eukaryotic cells.

Cellular Location

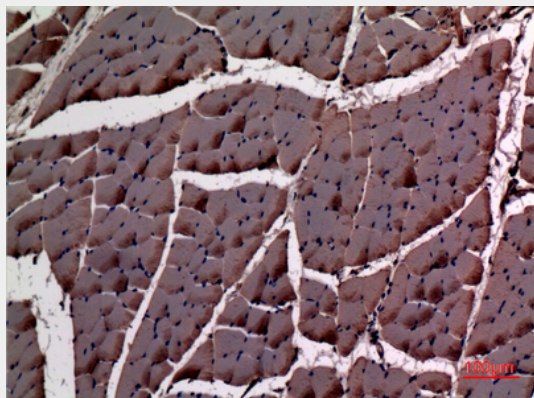
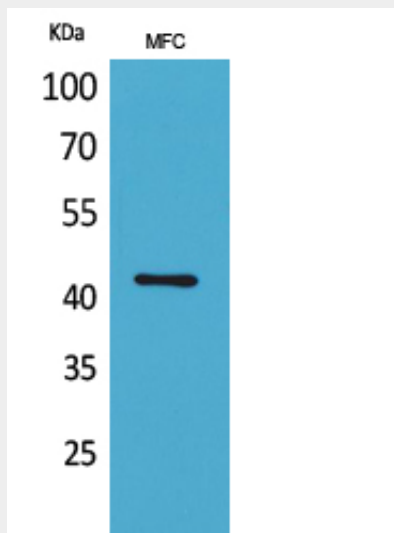
Cytoplasm, cytoskeleton.

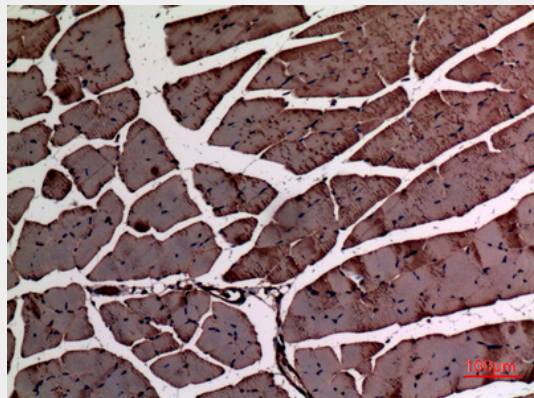
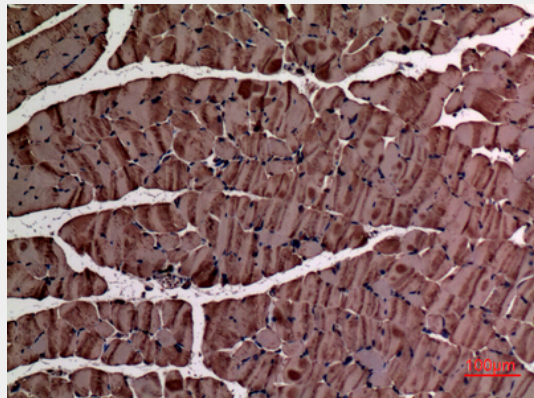
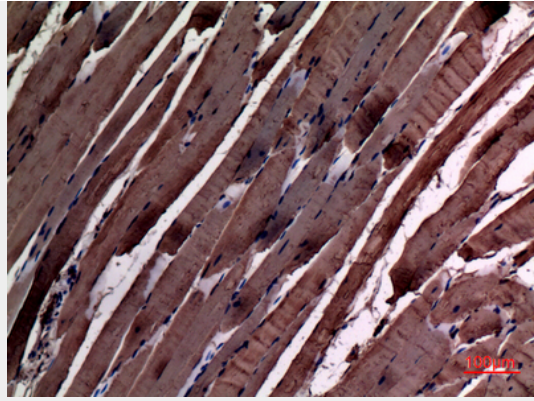
α-SMA Polyclonal Antibody - Protocols

Provided below are standard protocols that you may find useful for product applications.

- [Western Blot](#)
- [Blocking Peptides](#)
- [Dot Blot](#)
- [Immunohistochemistry](#)
- [Immunofluorescence](#)
- [Immunoprecipitation](#)
- [Flow Cytometry](#)
- [Cell Culture](#)

α -SMA Polyclonal Antibody - Images





α -SMA Polyclonal Antibody - Background

Actins are highly conserved proteins that are involved in various types of cell motility and are ubiquitously expressed in all eukaryotic cells.