

SCP-3 Polyclonal Antibody
Catalog # AP73300**Specification**

SCP-3 Polyclonal Antibody - Product Information

Application	WB
Primary Accession	Q8IZU3
Reactivity	Human, Mouse
Host	Rabbit
Clonality	Polyclonal

SCP-3 Polyclonal Antibody - Additional Information**Gene ID** 50511**Other Names**

SYCP3; SCP3; Synaptonemal complex protein 3; SCP-3

Dilution

WB~~Western Blot: 1/500 - 1/2000. ELISA: 1/20000. Not yet tested in other applications.

Format

Liquid in PBS containing 50% glycerol, 0.5% BSA and 0.09% (W/V) sodium azide.

Storage Conditions

-20°C

SCP-3 Polyclonal Antibody - Protein Information**Name** SYCP3**Synonyms** SCP3**Function**

Component of the synaptonemal complexes (SCS), formed between homologous chromosomes during meiotic prophase. Required for centromere pairing during meiosis in male germ cells (By similarity). Required for normal meiosis during spermatogenesis and male fertility (PubMed:14643120). Plays a lesser role in female fertility. Required for efficient phosphorylation of HORMAD1 and HORMAD2 (By similarity).

Cellular Location

Nucleus {ECO:0000250|UniProtKB:Q60547}. Chromosome {ECO:0000250|UniProtKB:Q60547}. Chromosome, centromere {ECO:0000250|UniProtKB:Q60547}. Note=It is present in early unpaired cores, in the lateral domains of the synaptonemal complex and in the chromosome cores when they separate at diplotene. It is found axial to the metaphase I chromosomes and in association with pairs of sister centromeres. The centromere-associated protein becomes dissociated from the centromeres at anaphase II and is not found in mitotic metaphase centromeres.

{ECO:0000250|UniProtKB:Q60547}

Tissue Location

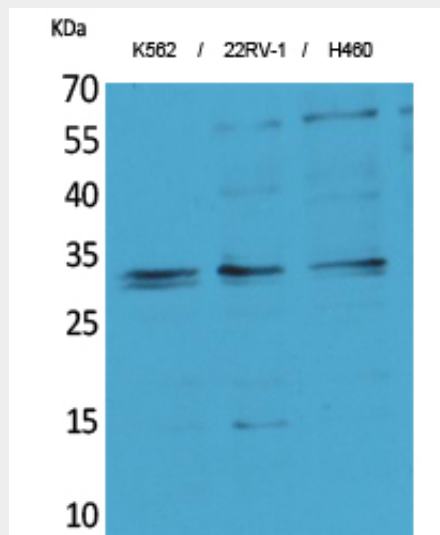
Testis-specific.

SCP-3 Polyclonal Antibody - Protocols

Provided below are standard protocols that you may find useful for product applications.

- [Western Blot](#)
- [Blocking Peptides](#)
- [Dot Blot](#)
- [Immunohistochemistry](#)
- [Immunofluorescence](#)
- [Immunoprecipitation](#)
- [Flow Cytometry](#)
- [Cell Culture](#)

SCP-3 Polyclonal Antibody - Images



SCP-3 Polyclonal Antibody - Background

Component of the synaptonemal complexes (SCS), formed between homologous chromosomes during meiotic prophase. Required for centromere pairing during meiosis in male germ cells (By similarity). Required for normal meiosis during spermatogenesis and male fertility (PubMed:14643120). Plays a lesser role in female fertility. Required for efficient phosphorylation of HORMAD1 and HORMAD2 (By similarity).