

**K-cadherin Polyclonal Antibody**  
Catalog # AP73294**Specification**

---

**K-cadherin Polyclonal Antibody - Product Information**

Application	WB
Primary Accession	<a href="#">P55285</a>
Reactivity	Human, Mouse, Rat
Host	Rabbit
Clonality	Polyclonal

**K-cadherin Polyclonal Antibody - Additional Information****Gene ID** 1004**Other Names**

CDH6; Cadherin-6; Kidney cadherin; K-cadherin

**Dilution**

WB~Western Blot: 1/500 - 1/2000. IHC-p: 1:100-300 ELISA: 1/20000. Not yet tested in other applications.

**Format**

Liquid in PBS containing 50% glycerol, 0.5% BSA and 0.09% (W/V) sodium azide.

**Storage Conditions**

-20°C

**K-cadherin Polyclonal Antibody - Protein Information****Name** CDH6**Function**

Cadherins are calcium-dependent cell adhesion proteins. They preferentially interact with themselves in a homophilic manner in connecting cells; cadherins may thus contribute to the sorting of heterogeneous cell types.

**Cellular Location**

Cell membrane; Single-pass type I membrane protein

**Tissue Location**

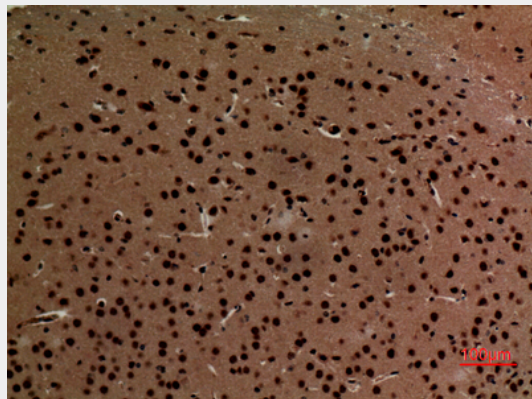
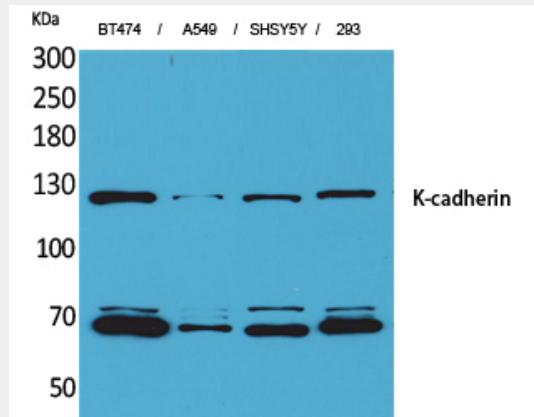
Highly expressed in brain, cerebellum, and kidney. Lung, pancreas, and gastric mucosa show a weak expression. Also expressed in certain liver and kidney carcinomas

**K-cadherin Polyclonal Antibody - Protocols**

Provided below are standard protocols that you may find useful for product applications.

- [Western Blot](#)
- [Blocking Peptides](#)
- [Dot Blot](#)
- [Immunohistochemistry](#)
- [Immunofluorescence](#)
- [Immunoprecipitation](#)
- [Flow Cytometry](#)
- [Cell Culture](#)

### K-cadherin Polyclonal Antibody - Images



### K-cadherin Polyclonal Antibody - Background

Cadherins are calcium-dependent cell adhesion proteins. They preferentially interact with themselves in a homophilic manner in connecting cells; cadherins may thus contribute to the sorting of heterogeneous cell types.