

Actin- α cardiac muscle Polyclonal Antibody
Catalog # AP73293**Specification**

Actin- α cardiac muscle Polyclonal Antibody - Product Information

Application	WB
Primary Accession	P68032
Reactivity	Human, Mouse, Rat
Host	Rabbit
Clonality	Polyclonal

Actin- α cardiac muscle Polyclonal Antibody - Additional Information**Gene ID** 70**Other Names**

ACTC1; ACTC; Actin, alpha cardiac muscle 1; Alpha-cardiac actin

Dilution

WB~~Western Blot: 1/500 - 1/2000. IHC-p: 1:100-300 ELISA: 1/20000. Not yet tested in other applications.

Format

Liquid in PBS containing 50% glycerol, 0.5% BSA and 0.09% (W/V) sodium azide.

Storage Conditions

-20°C

Actin- α cardiac muscle Polyclonal Antibody - Protein Information**Name** ACTC1**Synonyms** ACTC**Function**

Actins are highly conserved proteins that are involved in various types of cell motility and are ubiquitously expressed in all eukaryotic cells.

Cellular Location

Cytoplasm, cytoskeleton.

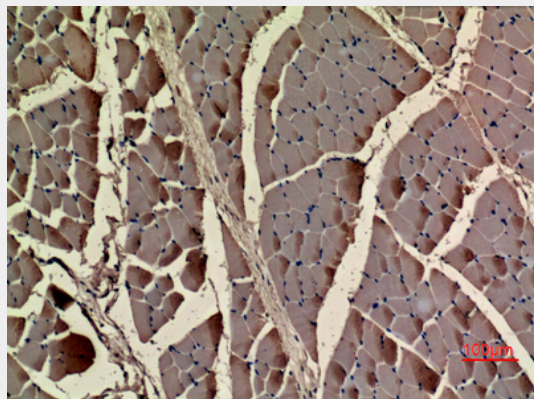
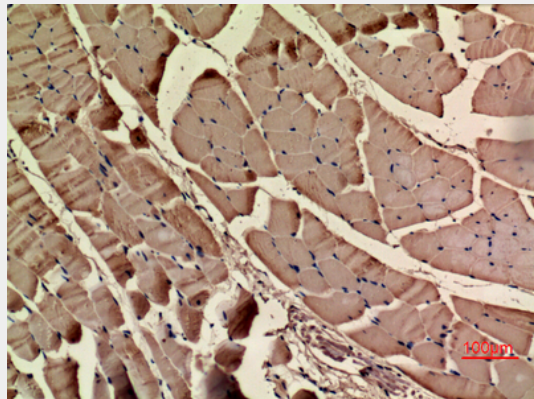
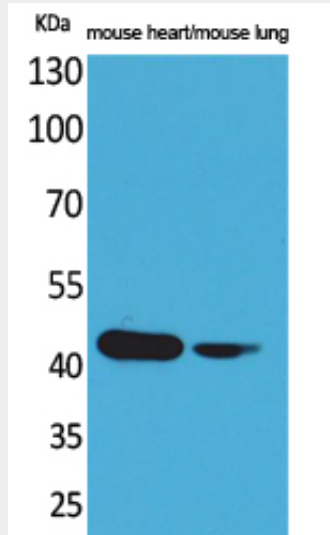
Actin- α cardiac muscle Polyclonal Antibody - Protocols

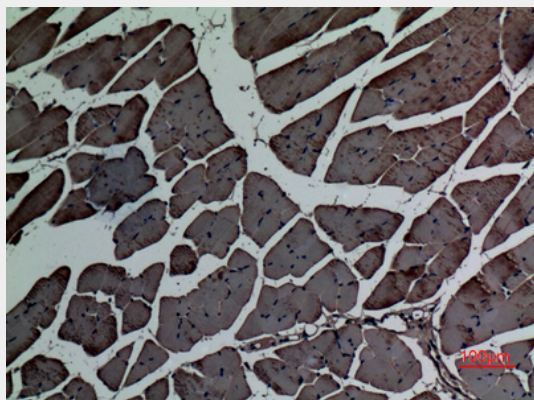
Provided below are standard protocols that you may find useful for product applications.

- [Western Blot](#)

- [Blocking Peptides](#)
- [Dot Blot](#)
- [Immunohistochemistry](#)
- [Immunofluorescence](#)
- [Immunoprecipitation](#)
- [Flow Cytometry](#)
- [Cell Culture](#)

Actin- α cardiac muscle Polyclonal Antibody - Images





Actin- α cardiac muscle Polyclonal Antibody - Background

Actins are highly conserved proteins that are involved in various types of cell motility and are ubiquitously expressed in all eukaryotic cells.