

DNA Pol μ Polyclonal Antibody
Catalog # AP73288**Specification**

DNA Pol μ Polyclonal Antibody - Product Information

Application	WB
Primary Accession	Q9NP87
Reactivity	Human
Host	Rabbit
Clonality	Polyclonal

DNA Pol μ Polyclonal Antibody - Additional Information**Gene ID** 27434**Other Names**

POLM; polmu; DNA-directed DNA/RNA polymerase mu; Pol Mu; Terminal transferase

Dilution

WB~~Western Blot: 1/500 - 1/2000. ELISA: 1/40000. Not yet tested in other applications.

Format

Liquid in PBS containing 50% glycerol, 0.5% BSA and 0.09% (W/V) sodium azide.

Storage Conditions

-20°C

DNA Pol μ Polyclonal Antibody - Protein Information**Name** POLM**Synonyms** polmu**Function**

Gap-filling polymerase involved in repair of DNA double-strand breaks by non-homologous end joining (NHEJ). Participates in immunoglobulin (Ig) light chain gene rearrangement in V(D)J recombination.

Cellular Location

Nucleus.

Tissue Location

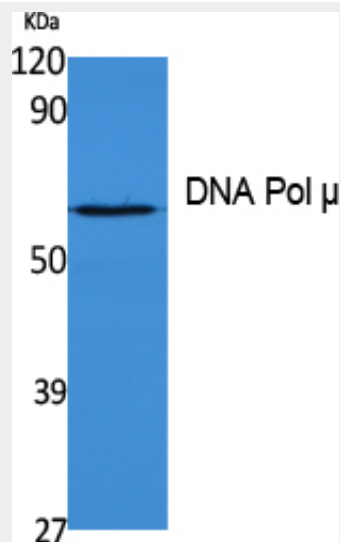
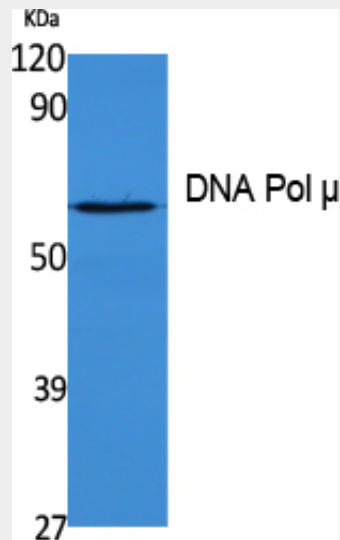
Expressed in a number of tissues. Abundant in thymus

DNA Pol μ Polyclonal Antibody - Protocols

Provided below are standard protocols that you may find useful for product applications.

- [Western Blot](#)
- [Blocking Peptides](#)
- [Dot Blot](#)
- [Immunohistochemistry](#)
- [Immunofluorescence](#)
- [Immunoprecipitation](#)
- [Flow Cytometry](#)
- [Cell Culture](#)

DNA Pol μ Polyclonal Antibody - Images



DNA Pol μ Polyclonal Antibody - Background

Gap-filling polymerase involved in repair of DNA double-strand breaks by non-homologous end joining (NHEJ). Participates in immunoglobulin (Ig) light chain gene rearrangement in V(D)J recombination.