

**NPT2b Polyclonal Antibody**  
Catalog # AP73287**Specification**

---

**NPT2b Polyclonal Antibody - Product Information**

Application	<b>WB</b>
Primary Accession	<a href="#">O95436</a>
Reactivity	<b>Human, Rat</b>
Host	<b>Rabbit</b>
Clonality	<b>Polyclonal</b>

**NPT2b Polyclonal Antibody - Additional Information****Gene ID** 10568**Other Names**

SLC34A2; Sodium-dependent phosphate transport protein 2B; Sodium-phosphate transport protein 2B; Na(+)-dependent phosphate cotransporter 2B; NaPi3b; Sodium/phosphate cotransporter 2B; Na(+)/Pi cotransporter 2B; NaPi-2b; Solute carrier family 34 member 2

**Dilution**

WB~~Western Blot: 1/500 - 1/2000. ELISA: 1/20000. Not yet tested in other applications.

**Format**

Liquid in PBS containing 50% glycerol, 0.5% BSA and 0.09% (W/V) sodium azide.

**Storage Conditions**

-20°C

**NPT2b Polyclonal Antibody - Protein Information****Name** SLC34A2**Function**

Involved in actively transporting phosphate into cells via Na(+) cotransport.

**Cellular Location**

Apical cell membrane {ECO:0000250|UniProtKB:Q9DBP0}; Multi-pass membrane protein.

Note=Localized at the brush border membranes of enterocytes.

{ECO:0000250|UniProtKB:Q9DBP0}

**Tissue Location**

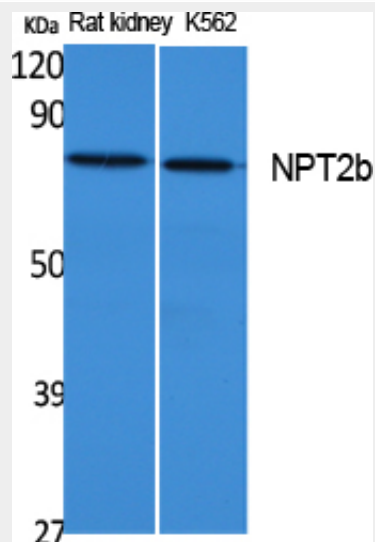
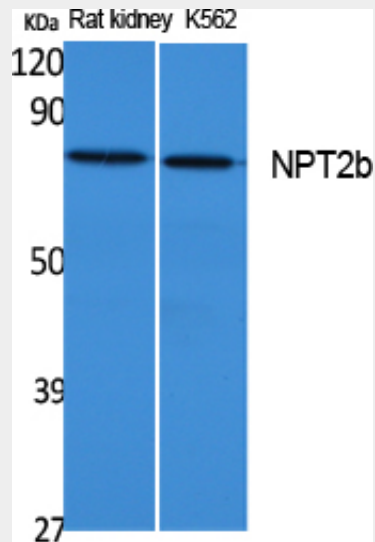
Highly expressed in lung. Also detected in pancreas, kidney, small intestine, ovary, testis, prostate and mammary gland. In lung, it is found in alveolar type II cells but not in bronchiolar epithelium.

**NPT2b Polyclonal Antibody - Protocols**

Provided below are standard protocols that you may find useful for product applications.

- [Western Blot](#)
- [Blocking Peptides](#)
- [Dot Blot](#)
- [Immunohistochemistry](#)
- [Immunofluorescence](#)
- [Immunoprecipitation](#)
- [Flow Cytometry](#)
- [Cell Culture](#)

#### **NPT2b Polyclonal Antibody - Images**



#### **NPT2b Polyclonal Antibody - Background**

May be involved in actively transporting phosphate into cells via Na(+) cotransport. It may be the main phosphate transport protein in the intestinal brush border membrane. May have a role in the synthesis of surfactant in lungs' alveoli.