

UBE4A Polyclonal Antibody
Catalog # AP73263**Specification**

UBE4A Polyclonal Antibody - Product Information

Application	WB
Primary Accession	Q14139
Reactivity	Human, Mouse, Rat
Host	Rabbit
Clonality	Polyclonal

UBE4A Polyclonal Antibody - Additional Information**Gene ID** 9354**Other Names**

UBE4A; KIAA0126; Ubiquitin conjugation factor E4 A

Dilution

WB~~Western Blot: 1/500 - 1/2000. IHC-p: 1:100-300 ELISA: 1/10000. Not yet tested in other applications.

Format

Liquid in PBS containing 50% glycerol, 0.5% BSA and 0.09% (W/V) sodium azide.

Storage Conditions

-20°C

UBE4A Polyclonal Antibody - Protein Information**Name** UBE4A ([HGNC:12499](#))**Function**

Ubiquitin-protein ligase that probably functions as an E3 ligase in conjunction with specific E1 and E2 ligases. May also function as an E4 ligase mediating the assembly of polyubiquitin chains on substrates ubiquitinated by another E3 ubiquitin ligase. Mediates 'Lys-48'-linked polyubiquitination of substrates.

Cellular Location

Cytoplasm {ECO:0000250|UniProtKB:E9Q735}.

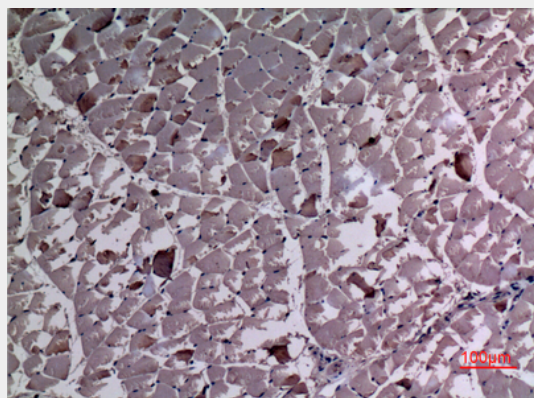
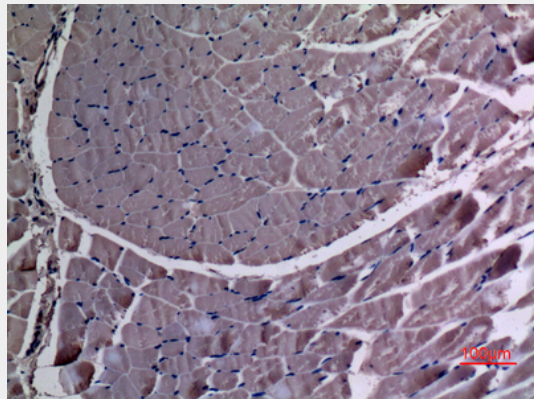
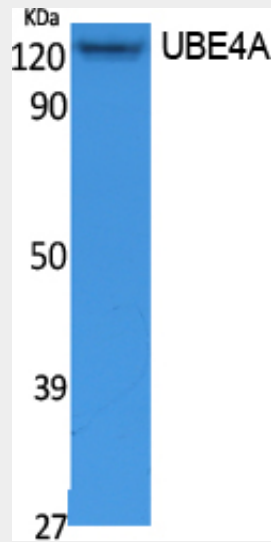
UBE4A Polyclonal Antibody - Protocols

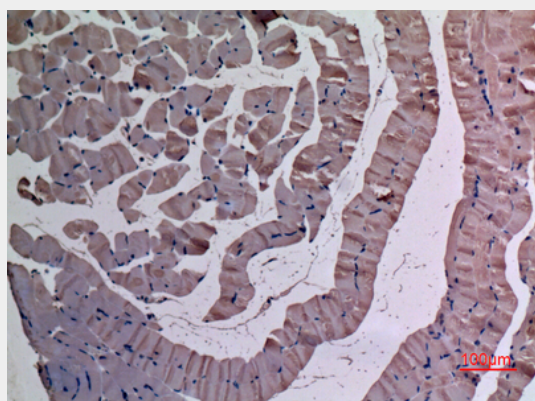
Provided below are standard protocols that you may find useful for product applications.

- [Western Blot](#)

- [Blocking Peptides](#)
- [Dot Blot](#)
- [Immunohistochemistry](#)
- [Immunofluorescence](#)
- [Immunoprecipitation](#)
- [Flow Cytometry](#)
- [Cell Culture](#)

UBE4A Polyclonal Antibody - Images





UBE4A Polyclonal Antibody - Background

Ubiquitin-protein ligase that probably functions as an E3 ligase in conjunction with specific E1 and E2 ligases. May also function as an E4 ligase mediating the assembly of polyubiquitin chains on substrates ubiquitinated by another E3 ubiquitin ligase. Mediates 'Lys-48'-linked polyubiquitination of substrates.