

Nup88 Polyclonal Antibody
Catalog # AP73256**Specification**

Nup88 Polyclonal Antibody - Product Information

| | |
|-------------------|------------------------|
| Application | WB |
| Primary Accession | Q99567 |
| Reactivity | Human, Mouse |
| Host | Rabbit |
| Clonality | Polyclonal |

Nup88 Polyclonal Antibody - Additional Information**Gene ID** 4927**Other Names**

NUP88; Nuclear pore complex protein Nup88; 88 kDa nucleoporin; Nucleoporin Nup88

Dilution

WB~~Western Blot: 1/500 - 1/2000. ELISA: 1/20000. Not yet tested in other applications.

Format

Liquid in PBS containing 50% glycerol, 0.5% BSA and 0.09% (W/V) sodium azide.

Storage Conditions

-20°C

Nup88 Polyclonal Antibody - Protein Information**Name** NUP88**Function**

Component of nuclear pore complex.

Cellular Location

Nucleus, nuclear pore complex

Tissue Location

Ubiquitous.

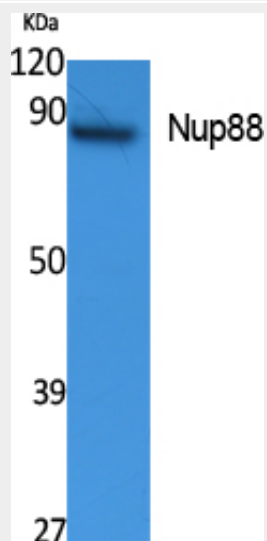
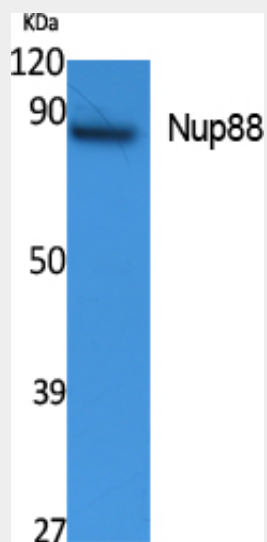
Nup88 Polyclonal Antibody - Protocols

Provided below are standard protocols that you may find useful for product applications.

- [Western Blot](#)
- [Blocking Peptides](#)

- [Dot Blot](#)
- [Immunohistochemistry](#)
- [Immunofluorescence](#)
- [Immunoprecipitation](#)
- [Flow Cytometry](#)
- [Cell Culture](#)

Nup88 Polyclonal Antibody - Images



Nup88 Polyclonal Antibody - Background

Essential component of nuclear pore complex.