

G-CSFR Polyclonal Antibody
Catalog # AP73252**Specification**

G-CSFR Polyclonal Antibody - Product Information

Application	WB
Primary Accession	Q99062
Reactivity	Human
Host	Rabbit
Clonality	Polyclonal

G-CSFR Polyclonal Antibody - Additional Information**Gene ID** 1441**Other Names**

CSF3R; GCSFR; Granulocyte colony-stimulating factor receptor; G-CSF receptor; G-CSF-R; CD antigen CD114

Dilution

WB~~Western Blot: 1/500 - 1/2000. ELISA: 1/10000. Not yet tested in other applications.

Format

Liquid in PBS containing 50% glycerol, 0.5% BSA and 0.09% (W/V) sodium azide.

Storage Conditions

-20°C

G-CSFR Polyclonal Antibody - Protein Information**Name** CSF3R**Synonyms** GCSFR**Function**

Receptor for granulocyte colony-stimulating factor (CSF3), essential for granulocytic maturation. Plays a crucial role in the proliferation, differentiation and survival of cells along the neutrophilic lineage. In addition it may function in some adhesion or recognition events at the cell surface.

Cellular Location

[Isoform 2]: Secreted.

Tissue Location

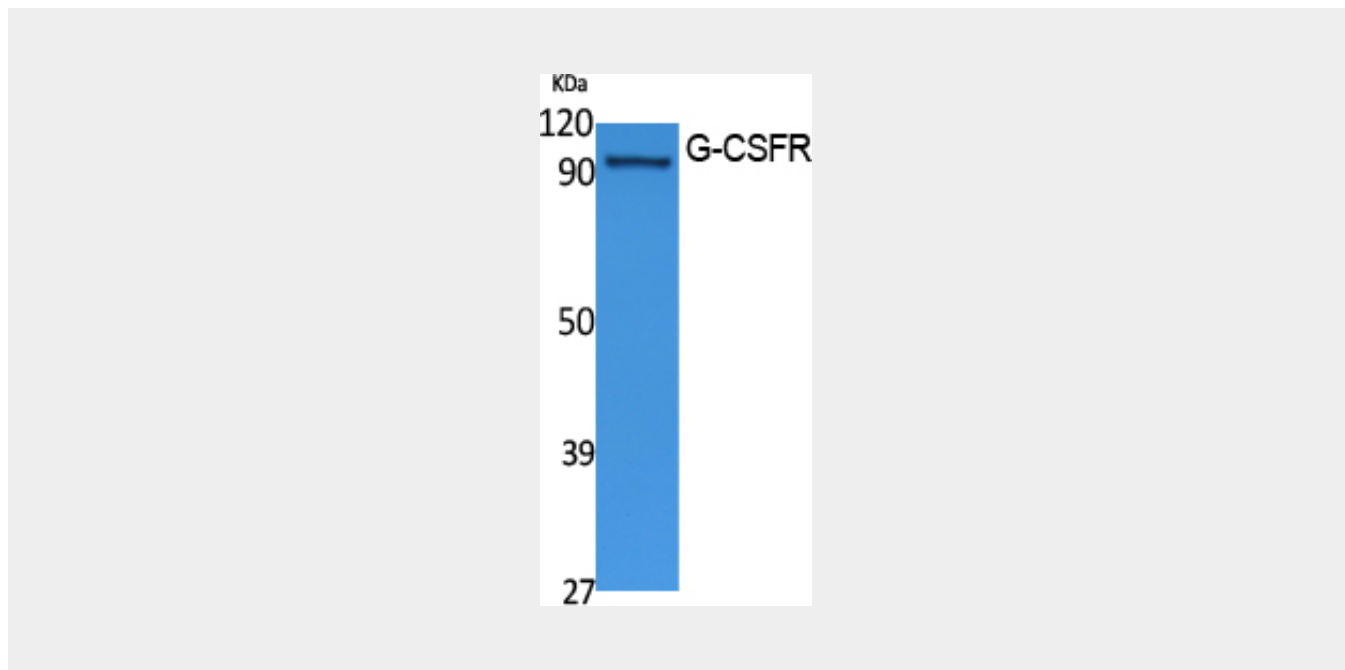
One or several isoforms have been found in myelogenous leukemia cell line KG-1, leukemia U-937 cell line, in bone marrow cells, placenta, and peripheral blood granulocytes. Isoform GCSFR-2 is found only in leukemia U-937 cells. Isoform GCSFR-3 is highly expressed in placenta

G-CSFR Polyclonal Antibody - Protocols

Provided below are standard protocols that you may find useful for product applications.

- [Western Blot](#)
- [Blocking Peptides](#)
- [Dot Blot](#)
- [Immunohistochemistry](#)
- [Immunofluorescence](#)
- [Immunoprecipitation](#)
- [Flow Cytometry](#)
- [Cell Culture](#)

G-CSFR Polyclonal Antibody - Images



G-CSFR Polyclonal Antibody - Background

Receptor for granulocyte colony-stimulating factor (CSF3), essential for granulocytic maturation. Plays a crucial role in the proliferation, differentiation and survival of cells along the neutrophilic lineage. In addition it may function in some adhesion or recognition events at the cell surface.