

**α-SMA Polyclonal Antibody**  
Catalog # AP73236**Specification**

---

**α-SMA Polyclonal Antibody - Product Information**

Application	WB
Primary Accession	<a href="#">P62736</a>
Reactivity	Human, Mouse, Rat
Host	Rabbit
Clonality	Polyclonal

**α-SMA Polyclonal Antibody - Additional Information****Gene ID** 59**Other Names**

ACTA2; ACTSA; ACTVS; GIG46; Actin; aortic smooth muscle; Alpha-actin-2; Cell growth-inhibiting gene 46 protein

**Dilution**

WB~~Western Blot: 1/500 - 1/2000. Immunohistochemistry: 1/100 - 1/300. ELISA: 1/20000. Not yet tested in other applications.

**Format**

Liquid in PBS containing 50% glycerol, 0.5% BSA and 0.05% sodium azide.

**Storage Conditions**

-20°C

**α-SMA Polyclonal Antibody - Protein Information****Name** ACTA2**Synonyms** ACTSA, ACTVS**Function**

Actins are highly conserved proteins that are involved in various types of cell motility and are ubiquitously expressed in all eukaryotic cells.

**Cellular Location**

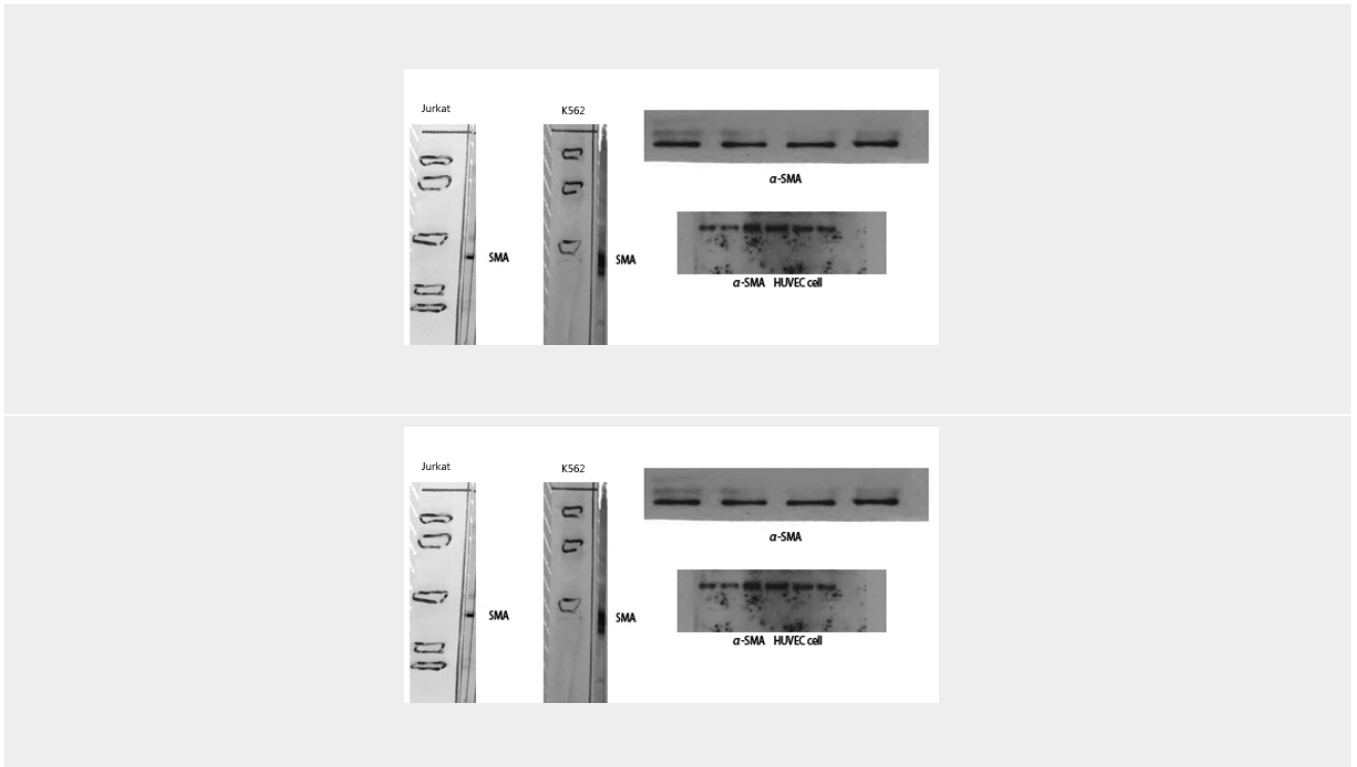
Cytoplasm, cytoskeleton.

**α-SMA Polyclonal Antibody - Protocols**

Provided below are standard protocols that you may find useful for product applications.

- [Western Blot](#)
- [Blocking Peptides](#)
- [Dot Blot](#)
- [Immunohistochemistry](#)
- [Immunofluorescence](#)
- [Immunoprecipitation](#)
- [Flow Cytometry](#)
- [Cell Culture](#)

### **$\alpha$ -SMA Polyclonal Antibody - Images**



### **$\alpha$ -SMA Polyclonal Antibody - Background**

Actins are highly conserved proteins that are involved in various types of cell motility and are ubiquitously expressed in all eukaryotic cells.