

Aladin Polyclonal Antibody
Catalog # AP73225**Specification****Aladin Polyclonal Antibody - Product Information**

Application	WB
Primary Accession	O9NRG9
Reactivity	Human, Rat
Host	Rabbit
Clonality	Polyclonal

Aladin Polyclonal Antibody - Additional Information**Gene ID** 8086**Other Names**

AAAS; ADRACALA; GL003; Aladin; Adracalin

Dilution

WB~~Western Blot: 1/500 - 1/2000. ELISA: 1/40000. Not yet tested in other applications.

Format

Liquid in PBS containing 50% glycerol, 0.5% BSA and 0.09% (W/V) sodium azide.

Storage Conditions

-20°C

Aladin Polyclonal Antibody - Protein Information**Name** AAAS**Synonyms** ADRACALA**Function**

Plays a role in the normal development of the peripheral and central nervous system (PubMed:11062474, PubMed:11159947, PubMed:16022285). Required for the correct localization of aurora kinase AURKA and the microtubule minus end-binding protein NUMA1 as well as a subset of AURKA targets which ensures proper spindle formation and timely chromosome alignment (PubMed:26246606).

Cellular Location

Nucleus, nuclear pore complex. Cytoplasm, cytoskeleton, spindle pole. Nucleus envelope. Note=In metaphase cells localizes within the spindle with some accumulation around spindle poles, with the highest concentration between the centrosome and metaphase plate (PubMed:26246606). The localization to the spindle is microtubule- mediated (PubMed:26246606).

Tissue Location

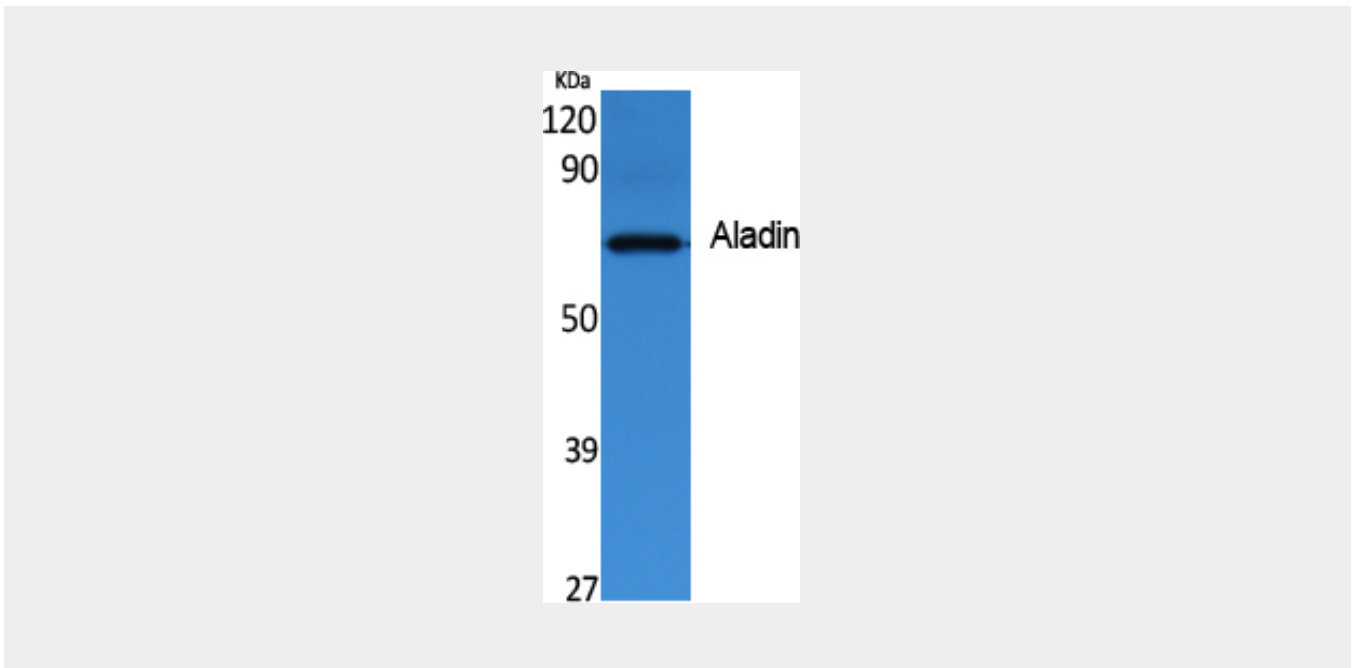
Widely expressed (PubMed:11159947, PubMed:16022285). Particularly abundant in cerebellum, corpus callosum, adrenal gland, pituitary gland, gastrointestinal structures and fetal lung (PubMed:11159947).

Aladin Polyclonal Antibody - Protocols

Provided below are standard protocols that you may find useful for product applications.

- [Western Blot](#)
- [Blocking Peptides](#)
- [Dot Blot](#)
- [Immunohistochemistry](#)
- [Immunofluorescence](#)
- [Immunoprecipitation](#)
- [Flow Cytometry](#)
- [Cell Culture](#)

Aladin Polyclonal Antibody - Images



Aladin Polyclonal Antibody - Background

Plays a role in the normal development of the peripheral and central nervous system.