

**ZNF23 Polyclonal Antibody**  
Catalog # AP73140**Specification**

---

**ZNF23 Polyclonal Antibody - Product Information**

Application	<b>WB</b>
Primary Accession	<a href="#">P17027</a>
Reactivity	<b>Human</b>
Host	<b>Rabbit</b>
Clonality	<b>Polyclonal</b>

**ZNF23 Polyclonal Antibody - Additional Information****Gene ID** 7571**Other Names**

ZNF23; KOX16; ZNF359; ZNF612; Zinc finger protein 23; Zinc finger protein 359; Zinc finger protein 612; Zinc finger protein KOX16

**Dilution**

WB~~Western Blot: 1/500 - 1/2000. Immunohistochemistry: 1/100 - 1/300. Immunofluorescence: 1/200 - 1/1000. ELISA: 1/10000. Not yet tested in other applications.

**Format**

Liquid in PBS containing 50% glycerol, 0.5% BSA and 0.09% (W/V) sodium azide.

**Storage Conditions**

-20°C

**ZNF23 Polyclonal Antibody - Protein Information****Name** ZNF23**Synonyms** KOX16, ZNF359, ZNF612**Function**

May be involved in transcriptional regulation. May have a role in embryonic development.

**Cellular Location**

Nucleus.

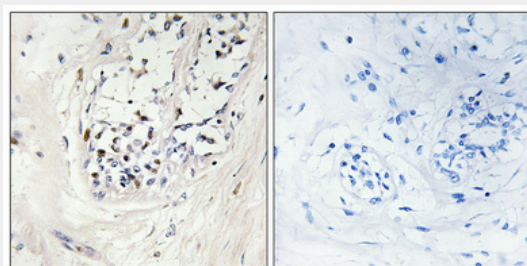
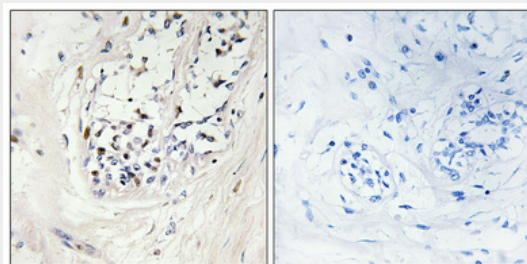
**ZNF23 Polyclonal Antibody - Protocols**

Provided below are standard protocols that you may find useful for product applications.

- [Western Blot](#)

- [Blocking Peptides](#)
- [Dot Blot](#)
- [Immunohistochemistry](#)
- [Immunofluorescence](#)
- [Immunoprecipitation](#)
- [Flow Cytometry](#)
- [Cell Culture](#)

### ZNF23 Polyclonal Antibody - Images



### ZNF23 Polyclonal Antibody - Background

May be involved in transcriptional regulation. May have a role in embryonic development.