

**WAVE3 Polyclonal Antibody**  
Catalog # AP73082**Specification**

---

**WAVE3 Polyclonal Antibody - Product Information**

Application	WB
Primary Accession	<a href="#">Q9UPY6</a>
Reactivity	Human, Mouse
Host	Rabbit
Clonality	Polyclonal

**WAVE3 Polyclonal Antibody - Additional Information****Gene ID** 10810**Other Names**

WASF3; KIAA0900; SCAR3; WAVE3; Wiskott-Aldrich syndrome protein family member 3; WASP family protein member 3; Protein WAVE-3; Verprolin homology domain-containing protein 3

**Dilution**

WB~~Western Blot: 1/500 - 1/2000. Immunohistochemistry: 1/100 - 1/300. ELISA: 1/10000. Not yet tested in other applications.

**Format**

Liquid in PBS containing 50% glycerol, 0.5% BSA and 0.09% (W/V) sodium azide.

**Storage Conditions**

-20°C

**WAVE3 Polyclonal Antibody - Protein Information****Name** WASF3**Synonyms** KIAA0900, SCAR3, WAVE3**Function**

Downstream effector molecules involved in the transmission of signals from tyrosine kinase receptors and small GTPases to the actin cytoskeleton. Plays a role in the regulation of cell morphology and cytoskeletal organization. Required in the control of cell shape.

**Cellular Location**

Cytoplasm, cytoskeleton.

**Tissue Location**

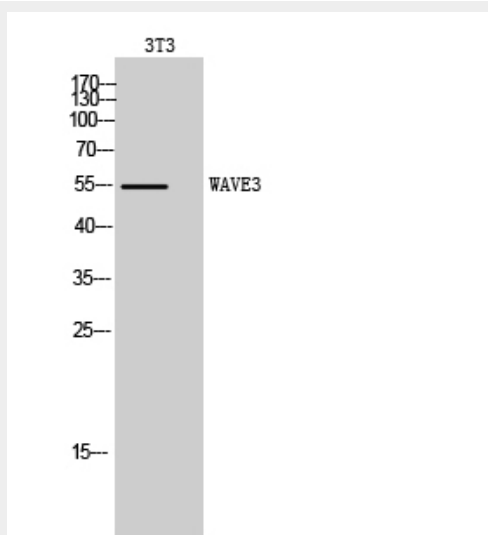
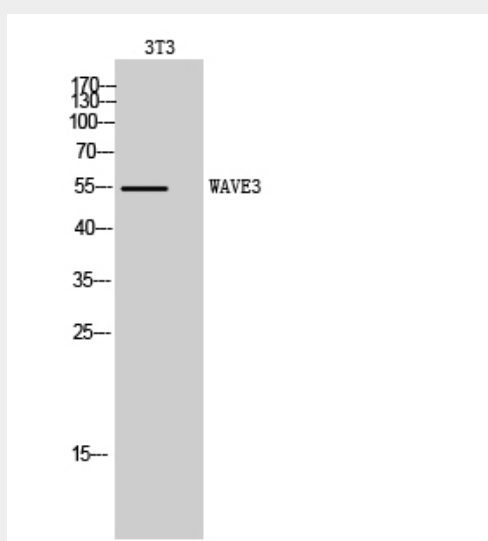
Expressed in ovary and brain.

## WAVE3 Polyclonal Antibody - Protocols

Provided below are standard protocols that you may find useful for product applications.

- [Western Blot](#)
- [Blocking Peptides](#)
- [Dot Blot](#)
- [Immunohistochemistry](#)
- [Immunofluorescence](#)
- [Immunoprecipitation](#)
- [Flow Cytometry](#)
- [Cell Culture](#)

## WAVE3 Polyclonal Antibody - Images



## WAVE3 Polyclonal Antibody - Background

Downstream effector molecules involved in the transmission of signals from tyrosine kinase

receptors and small GTPases to the actin cytoskeleton. Plays a role in the regulation of cell morphology and cytoskeletal organization. Required in the control of cell shape.