

**CA2 Antibody (N-term)**  
**Purified Rabbit Polyclonal Antibody (Pab)**  
**Catalog # AP7307a**

**Specification**

---

**CA2 Antibody (N-term) - Product Information**

Application	IF, WB,E
Primary Accession	<a href="#">P00918</a>
Reactivity	Human, Mouse
Host	Rabbit
Clonality	Polyclonal
Isotype	Rabbit IgG
Calculated MW	29246
Antigen Region	54-83

**CA2 Antibody (N-term) - Additional Information**

**Gene ID** 760

**Other Names**

Carbonic anhydrase 2, Carbonate dehydratase II, Carbonic anhydrase C, CAC, Carbonic anhydrase II, CA-II, CA2

**Target/Specificity**

This CA2 antibody is generated from rabbits immunized with a KLH conjugated synthetic peptide between 54-83 amino acids from the N-terminal region of human CA2.

**Dilution**

IF~~1:10~50

WB~~1:1000

**Format**

Purified polyclonal antibody supplied in PBS with 0.09% (W/V) sodium azide. This antibody is prepared by Saturated Ammonium Sulfate (SAS) precipitation followed by dialysis against PBS.

**Storage**

Maintain refrigerated at 2-8°C for up to 2 weeks. For long term storage store at -20°C in small aliquots to prevent freeze-thaw cycles.

**Precautions**

CA2 Antibody (N-term) is for research use only and not for use in diagnostic or therapeutic procedures.

**CA2 Antibody (N-term) - Protein Information**

**Name** CA2

**Function** Catalyzes the reversible hydration of carbon dioxide (PubMed:[11327835](#),

PubMed:[11802772](#), PubMed:[11831900](#), PubMed:[12056894](#), PubMed:[12171926](#), PubMed:[1336460](#), PubMed:[14736236](#), PubMed:[15300855](#), PubMed:[15453828](#), PubMed:[15667203](#), PubMed:[15865431](#), PubMed:[16106378](#), PubMed:[16214338](#), PubMed:[16290146](#), PubMed:[16686544](#), PubMed:[16759856](#), PubMed:[16807956](#), PubMed:[17127057](#), PubMed:[17251017](#), PubMed:[17314045](#), PubMed:[17330962](#), PubMed:[17346964](#), PubMed:[17540563](#), PubMed:[17588751](#), PubMed:[17705204](#), PubMed:[18024029](#), PubMed:[18162396](#), PubMed:[18266323](#), PubMed:[18374572](#), PubMed:[18481843](#), PubMed:[18618712](#), PubMed:[18640037](#), PubMed:[18942852](#), PubMed:[1909891](#), PubMed:[1910042](#), PubMed:[19170619](#), PubMed:[19186056](#), PubMed:[19206230](#), PubMed:[19520834](#), PubMed:[19778001](#), PubMed:[7761440](#), PubMed:[7901850](#), PubMed:[8218160](#), PubMed:[8262987](#), PubMed:[8399159](#), PubMed:[8451242](#), PubMed:[8485129](#), PubMed:[8639494](#), PubMed:[9265618](#), PubMed:[9398308](#)). Can also hydrate cyanamide to urea (PubMed:[10550681](#), PubMed:[11015219](#)). Stimulates the chloride-bicarbonate exchange activity of SLC26A6 (PubMed:[15990874](#)). Essential for bone resorption and osteoclast differentiation (PubMed:[15300855](#)). Involved in the regulation of fluid secretion into the anterior chamber of the eye. Contributes to intracellular pH regulation in the duodenal upper villous epithelium during proton-coupled peptide absorption.

### Cellular Location

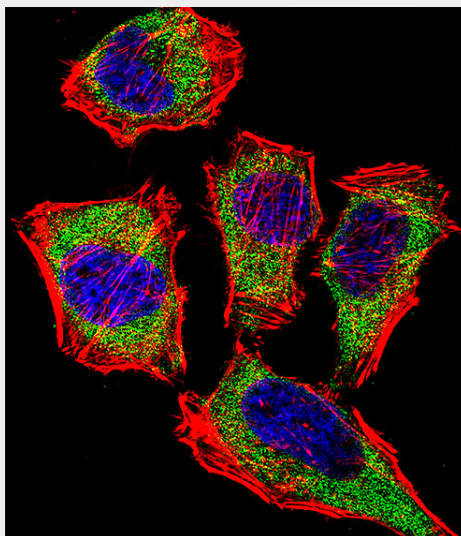
Cytoplasm. Cell membrane. Note=Colocalized with SLC26A6 at the surface of the cell membrane in order to form a bicarbonate transport metabolon. Displaced from the cytosolic surface of the cell membrane by PKC in phorbol myristate acetate (PMA)-induced cells

### CA2 Antibody (N-term) - Protocols

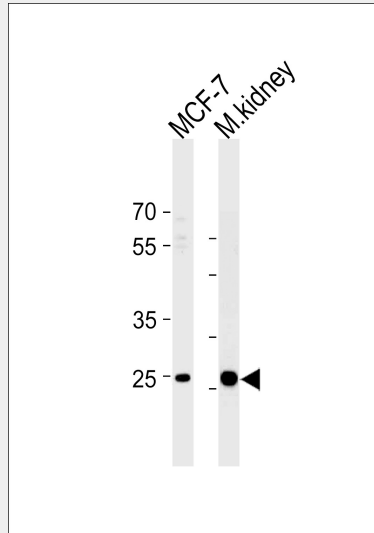
Provided below are standard protocols that you may find useful for product applications.

- [Western Blot](#)
- [Blocking Peptides](#)
- [Dot Blot](#)
- [Immunohistochemistry](#)
- [Immunofluorescence](#)
- [Immunoprecipitation](#)
- [Flow Cytometry](#)
- [Cell Culture](#)

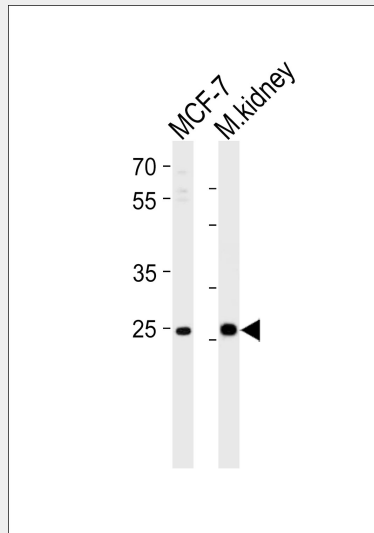
### CA2 Antibody (N-term) - Images



Fluorescent confocal image of Hela cell stained with CA2 Antibody (N-term)(Cat#AP7307a).Hela cells were fixed with 4% PFA (20 min), permeabilized with Triton X-100 (0.1%, 10 min), then incubated with CA2 primary antibody (1:25, 1 h at 37°C). For secondary antibody, Alexa Fluor® 488 conjugated donkey anti-rabbit antibody (green) was used (1:400, 50 min at 37°C).Cytoplasmic actin was counterstained with Alexa Fluor® 555 (red) conjugated Phalloidin (7units/ml, 1 h at 37°C). Nuclei were counterstained with DAPI (blue) (10 µg/ml, 10 min). CA2 immunoreactivity is localized to Cytoplasm significantly.



CA2 Antibody (N-term) (Cat.# AP7307a) western blot analysis in MCF-7 cell line and mouse kidney tissue lysates (35ug/lane).This demonstrates the CA2 antibody detected the CA2 protein (arrow).



Western blot analysis of lysates from MCF-7 cell line and mouse kidney tissue lysate (from left to right), using CA2 Antibody (N-term) (Cat. #AP7307a). AP7307a was diluted at 1:1000 at each lane. A goat anti-rabbit IgG H&L(HRP) at 1:5000 dilution was used as the secondary antibody. Lysates at 35ug per lane.

### CA2 Antibody (N-term) - Background

CA2 is one of several (at least 7) isozymes of carbonic anhydrase. Carbonic anhydrase catalyzes reversible hydration of carbon dioxide. Defects in this enzyme are associated with osteopetrosis and renal tubular acidosis.

**CA2 Antibody (N-term) - References**

- Sultana, R., et al. *Antioxid. Redox Signal.* 12(3):327-336(2010)  
Fisher, S.Z., et al. *Biochemistry* 49(3):415-421(2010)  
Avvaru, B.S., et al. *Biochemistry* 49(2):249-251(2010)  
Maupin, C.M., et al. *Biochemistry* 48(33):7996-8005(2009)  
Avvaru, B.S., et al. *Biochemistry* 48(31):7365-7372(2009)