

VIM Polyclonal Antibody
Catalog # AP73061**Specification**

VIM Polyclonal Antibody - Product Information

Application	WB
Primary Accession	P08670
Reactivity	Human, Mouse, Rat
Host	Rabbit
Clonality	Polyclonal

VIM Polyclonal Antibody - Additional Information**Gene ID** 7431**Other Names**
VIM; Vimentin**Dilution**

WB~~Western Blot: 1/500 - 1/2000. Immunohistochemistry: 1/100 - 1/300. Immunofluorescence: 1/200 - 1/1000. ELISA: 1/10000. Not yet tested in other applications.

Format

Liquid in PBS containing 50% glycerol, 0.5% BSA and 0.09% (W/V) sodium azide.

Storage Conditions

-20°C

VIM Polyclonal Antibody - Protein Information**Name** VIM**Function**

Vimentins are class-III intermediate filaments found in various non-epithelial cells, especially mesenchymal cells. Vimentin is attached to the nucleus, endoplasmic reticulum, and mitochondria, either laterally or terminally.

Cellular Location

Cytoplasm. Cytoplasm, cytoskeleton. Nucleus matrix {ECO:0000250|UniProtKB:P31000}. Cell membrane {ECO:0000250|UniProtKB:P20152}

Tissue Location

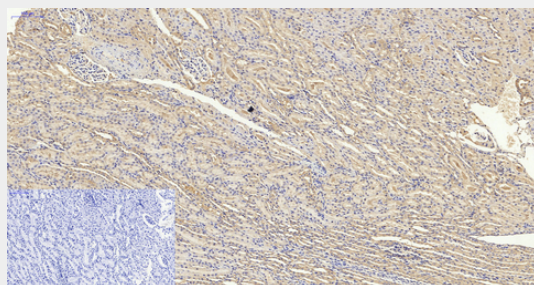
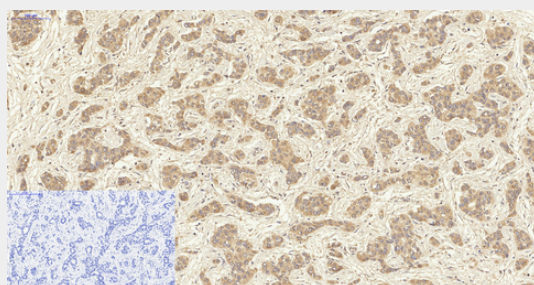
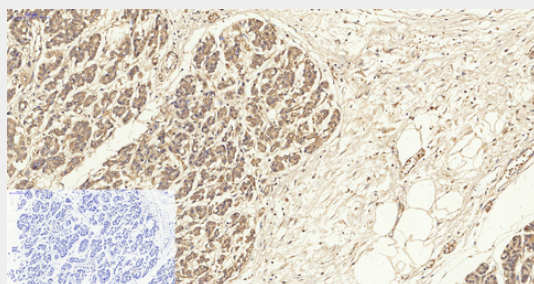
Highly expressed in fibroblasts, some expression in T- and B-lymphocytes, and little or no expression in Burkitt's lymphoma cell lines. Expressed in many hormone-independent mammary carcinoma cell lines.

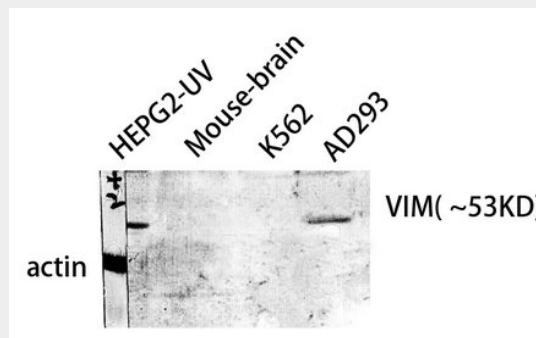
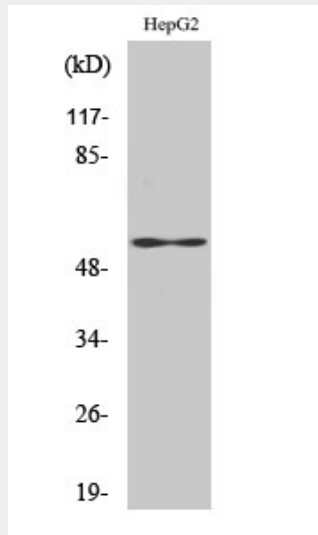
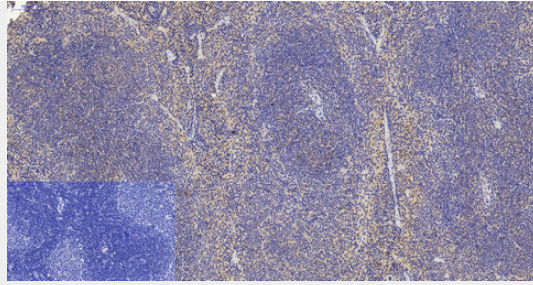
VIM Polyclonal Antibody - Protocols

Provided below are standard protocols that you may find useful for product applications.

- [Western Blot](#)
- [Blocking Peptides](#)
- [Dot Blot](#)
- [Immunohistochemistry](#)
- [Immunofluorescence](#)
- [Immunoprecipitation](#)
- [Flow Cytometry](#)
- [Cell Culture](#)

VIM Polyclonal Antibody - Images





VIM Polyclonal Antibody - Background

Vimentins are class-III intermediate filaments found in various non-epithelial cells, especially mesenchymal cells. Vimentin is attached to the nucleus, endoplasmic reticulum, and mitochondria, either laterally or terminally.