

VEGF-B Polyclonal Antibody
Catalog # AP73054**Specification**

VEGF-B Polyclonal Antibody - Product Information

Application	WB
Primary Accession	P49765
Reactivity	Human, Mouse, Rat
Host	Rabbit
Clonality	Polyclonal

VEGF-B Polyclonal Antibody - Additional Information**Gene ID** 7423**Other Names**

VEGFB; VRF; Vascular endothelial growth factor B; VEGF-B; VEGF-related factor; VRF

Dilution

WB~~Western Blot: 1/500 - 1/2000. Immunohistochemistry: 1/100 - 1/300. ELISA: 1/20000. Not yet tested in other applications.

Format

Liquid in PBS containing 50% glycerol, 0.5% BSA and 0.09% (W/V) sodium azide.

Storage Conditions

-20°C

VEGF-B Polyclonal Antibody - Protein Information**Name** VEGFB**Synonyms** VRF**Function**

Growth factor for endothelial cells. VEGF-B167 binds heparin and neuropilin-1 whereas the binding to neuropilin-1 of VEGF-B186 is regulated by proteolysis.

Cellular Location

Secreted. Note=Secreted but remains associated to cells or to the extracellular matrix unless released by heparin

Tissue Location

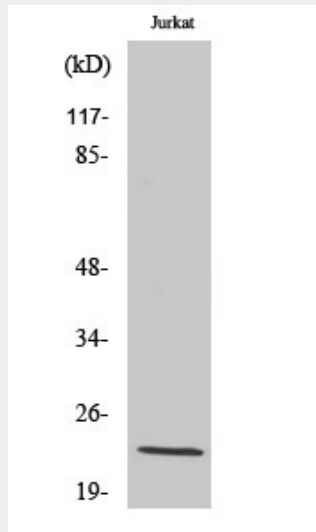
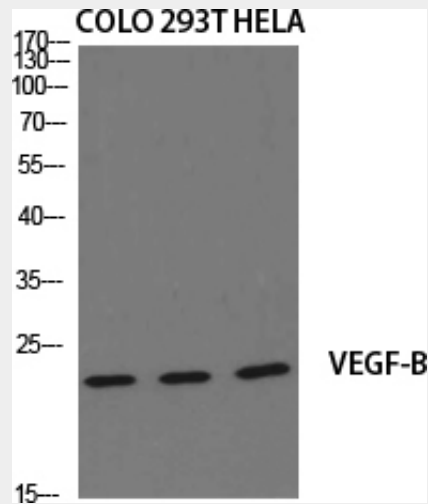
Expressed in all tissues except liver. Highest levels found in heart, skeletal muscle and pancreas

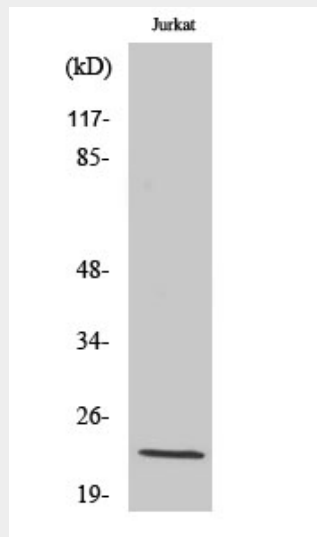
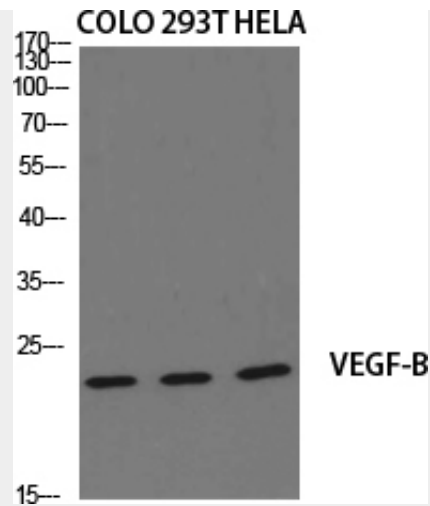
VEGF-B Polyclonal Antibody - Protocols

Provided below are standard protocols that you may find useful for product applications.

- [Western Blot](#)
- [Blocking Peptides](#)
- [Dot Blot](#)
- [Immunohistochemistry](#)
- [Immunofluorescence](#)
- [Immunoprecipitation](#)
- [Flow Cytometry](#)
- [Cell Culture](#)

VEGF-B Polyclonal Antibody - Images





VEGF-B Polyclonal Antibody - Background

Growth factor for endothelial cells. VEGF-B167 binds heparin and neuropilin-1 whereas the binding to neuropilin-1 of VEGF-B186 is regulated by proteolysis.