

V-ATPase B1 Polyclonal Antibody
Catalog # AP73041**Specification****V-ATPase B1 Polyclonal Antibody - Product Information**

Application	WB
Primary Accession	P15313
Reactivity	Human, Mouse
Host	Rabbit
Clonality	Polyclonal

V-ATPase B1 Polyclonal Antibody - Additional Information

Gene ID 525

Other Names

ATP6V1B1; ATP6B1; VATB; VPP3; V-type proton ATPase subunit B; kidney isoform; V-ATPase subunit B 1; Endomembrane proton pump 58 kDa subunit; Vacuolar proton pump subunit B 1

Dilution

WB~~Western Blot: 1/500 - 1/2000. Immunohistochemistry: 1/100 - 1/300. ELISA: 1/5000. Not yet tested in other applications.

Format

Liquid in PBS containing 50% glycerol, 0.5% BSA and 0.09% (W/V) sodium azide.

Storage Conditions

-20°C

V-ATPase B1 Polyclonal Antibody - Protein Information

Name ATP6V1B1

Synonyms ATP6B1, VATB, VPP3

Function

Non-catalytic subunit of the V1 complex of vacuolar(H⁺)- ATPase (V-ATPase), a multisubunit enzyme composed of a peripheral complex (V1) that hydrolyzes ATP and a membrane integral complex (V0) that translocates protons (PubMed:[16769747](http://www.uniprot.org/citations/16769747)). V-ATPase is responsible for acidifying and maintaining the pH of intracellular compartments and in some cell types, is targeted to the plasma membrane, where it is responsible for acidifying the extracellular environment (PubMed:[32001091](http://www.uniprot.org/citations/32001091)). Essential for the proper assembly and activity of V- ATPase (PubMed:[16769747](http://www.uniprot.org/citations/16769747)). In renal intercalated cells, mediates secretion of protons (H⁺) into the urine thereby ensuring correct urinary acidification (PubMed:[16769747](http://www.uniprot.org/citations/16769747)). Required for optimal olfactory function by mediating the

acidification of the nasal olfactory epithelium (By similarity).

Cellular Location

Apical cell membrane. Basolateral cell membrane {ECO:0000250|UniProtKB:Q91YH6}

Tissue Location

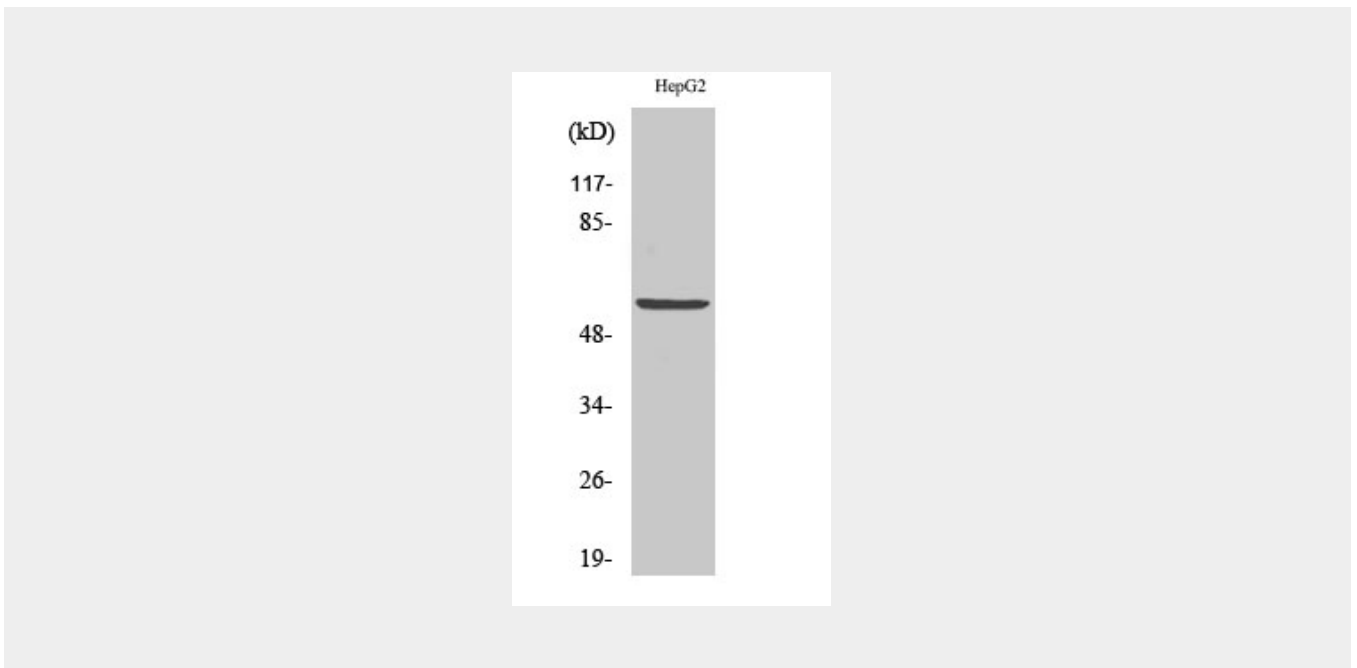
Kidney; localizes to early distal nephron, encompassing thick ascending limbs and distal convoluted tubules (at protein level) (PubMed:16769747, PubMed:29993276). Expressed in the cochlea and endolymphatic sac (PubMed:9916796)

V-ATPase B1 Polyclonal Antibody - Protocols

Provided below are standard protocols that you may find useful for product applications.

- [Western Blot](#)
- [Blocking Peptides](#)
- [Dot Blot](#)
- [Immunohistochemistry](#)
- [Immunofluorescence](#)
- [Immunoprecipitation](#)
- [Flow Cytometry](#)
- [Cell Culture](#)

V-ATPase B1 Polyclonal Antibody - Images



V-ATPase B1 Polyclonal Antibody - Background

Non-catalytic subunit of the peripheral V1 complex of vacuolar ATPase. V-ATPase is responsible for acidifying a variety of intracellular compartments in eukaryotic cells.