

**UTP14A Polyclonal Antibody**  
Catalog # AP73029**Specification**

---

**UTP14A Polyclonal Antibody - Product Information**

Application	WB
Primary Accession	<a href="#">Q9BVJ6</a>
Reactivity	Human, Mouse
Host	Rabbit
Clonality	Polyclonal

**UTP14A Polyclonal Antibody - Additional Information****Gene ID** 10813**Other Names**

UTP14A; SDCCAG16; U3 small nucleolar RNA-associated protein 14 homolog A; Antigen NY-CO-16; Serologically defined colon cancer antigen 16

**Dilution**

WB~~Western Blot: 1/500 - 1/2000. Immunohistochemistry: 1/100 - 1/300. Immunofluorescence: 1/200 - 1/1000. ELISA: 1/20000. Not yet tested in other applications.

**Format**

Liquid in PBS containing 50% glycerol, 0.5% BSA and 0.09% (W/V) sodium azide.

**Storage Conditions**

-20°C

**UTP14A Polyclonal Antibody - Protein Information****Name** UTP14A**Synonyms** SDCCAG16**Function**

May be required for ribosome biogenesis.

**Cellular Location**

Nucleus, nucleolus.

**Tissue Location**

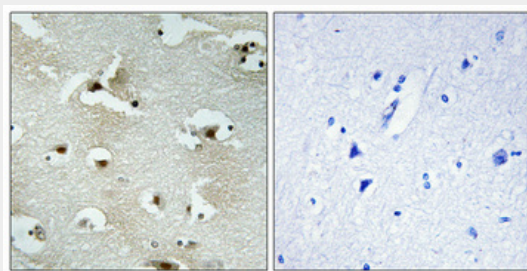
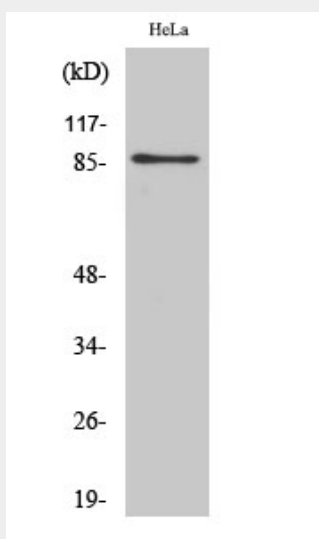
Ubiquitously expressed.

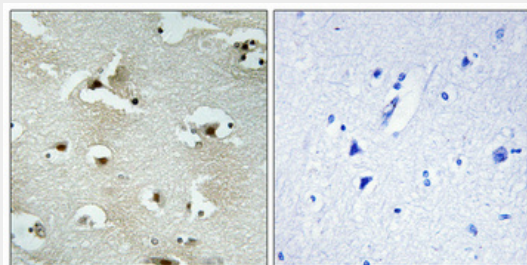
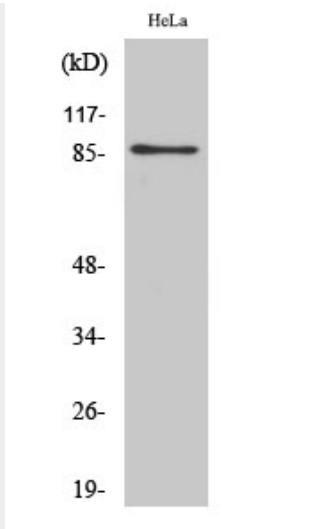
**UTP14A Polyclonal Antibody - Protocols**

Provided below are standard protocols that you may find useful for product applications.

- [Western Blot](#)
- [Blocking Peptides](#)
- [Dot Blot](#)
- [Immunohistochemistry](#)
- [Immunofluorescence](#)
- [Immunoprecipitation](#)
- [Flow Cytometry](#)
- [Cell Culture](#)

#### UTP14A Polyclonal Antibody - Images





### UTP14A Polyclonal Antibody - Background

May be required for ribosome biogenesis.