

UBE3C Polyclonal Antibody
Catalog # AP72985**Specification****UBE3C Polyclonal Antibody - Product Information**

Application	WB
Primary Accession	Q15386
Reactivity	Human
Host	Rabbit
Clonality	Polyclonal

UBE3C Polyclonal Antibody - Additional Information**Gene ID** 9690**Other Names**

UBE3C; KIAA0010; KIAA10; Ubiquitin-protein ligase E3C; HectH2

Dilution

WB~~Western Blot: 1/500 - 1/2000. ELISA: 1/10000. Not yet tested in other applications.

Format

Liquid in PBS containing 50% glycerol, 0.5% BSA and 0.09% (W/V) sodium azide.

Storage Conditions

-20°C

UBE3C Polyclonal Antibody - Protein Information**Name** UBE3C {ECO:0000303|PubMed:17323924, ECO:0000312|HGNC:HGNC:16803}**Function**

E3 ubiquitin-protein ligase that specifically catalyzes 'Lys- 29'- and 'Lys-48'-linked polyubiquitin chains (PubMed: [11278995](http://www.uniprot.org/citations/11278995), PubMed: [12692129](http://www.uniprot.org/citations/12692129), PubMed: [16341092](http://www.uniprot.org/citations/16341092), PubMed: [16601690](http://www.uniprot.org/citations/16601690), PubMed: [24158444](http://www.uniprot.org/citations/24158444), PubMed: [24811749](http://www.uniprot.org/citations/24811749), PubMed: [25752573](http://www.uniprot.org/citations/25752573), PubMed: [25752577](http://www.uniprot.org/citations/25752577), PubMed: [32039437](http://www.uniprot.org/citations/32039437), PubMed: [33637724](http://www.uniprot.org/citations/33637724), PubMed: [34239127](http://www.uniprot.org/citations/34239127)). Accepts ubiquitin from the E2 ubiquitin-conjugating enzyme UBE2D1 in the form of a thioester and then directly transfers the ubiquitin to targeted substrates (PubMed: [32039437](http://www.uniprot.org/citations/32039437), PubMed: [9575161](http://www.uniprot.org/citations/9575161)).

Associates with the proteasome and promotes elongation of ubiquitin chains on substrates bound to the 26S proteasome (PubMed:24158444, PubMed:28396413, PubMed:31375563). Also catalyzes 'Lys-29'- and 'Lys-48'-linked ubiquitination of 26S proteasome subunit ADRM1/RPN13 in response to proteotoxic stress, impairing the ability of the proteasome to bind and degrade ubiquitin- conjugated proteins (PubMed:24811749, PubMed:31375563). Acts as a negative regulator of autophagy by mediating 'Lys-29'- and 'Lys-48'- linked ubiquitination of PIK3C3/VPS34, promoting its degradation (PubMed:33637724). Can assemble unanchored poly-ubiquitin chains in either 'Lys-29'- or 'Lys-48'-linked polyubiquitin chains; with some preference for 'Lys-48' linkages (PubMed:11278995, PubMed:16601690, PubMed:25752577). Acts as a negative regulator of type I interferon by mediating 'Lys-48'-linked ubiquitination of IRF3 and IRF7, leading to their degradation by the proteasome (PubMed:21167755). Catalyzes ubiquitination and degradation of CAND2 (PubMed:12692129).

Tissue Location

Highly expressed in skeletal muscle. Detected at much lower levels in kidney and pancreas.

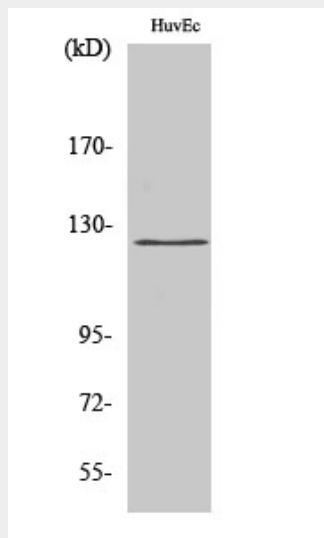
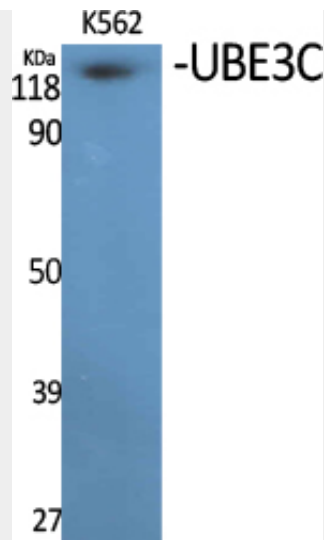
UBE3C Polyclonal Antibody - Protocols

Provided below are standard protocols that you may find useful for product applications.

- [Western Blot](#)
- [Blocking Peptides](#)
- [Dot Blot](#)
- [Immunohistochemistry](#)
- [Immunofluorescence](#)
- [Immunoprecipitation](#)
- [Flow Cytometry](#)
- [Cell Culture](#)

UBE3C Polyclonal Antibody - Images





UBE3C Polyclonal Antibody - Background

E3 ubiquitin-protein ligase that accepts ubiquitin from the E2 ubiquitin-conjugating enzyme UBE2D1 in the form of a thioester and then directly transfers the ubiquitin to targeted substrates. Can assemble unanchored poly-ubiquitin chains in either 'Lys-29'- or 'Lys-48'-linked polyubiquitin chains. Has preference for 'Lys-48' linkages. It can target itself for ubiquitination in vitro and may promote its own degradation in vivo.