

**Trypsin-3 Polyclonal Antibody**  
Catalog # AP72937**Specification**

---

**Trypsin-3 Polyclonal Antibody - Product Information**

Application	WB
Primary Accession	<a href="#">P35030</a>
Reactivity	Human
Host	Rabbit
Clonality	Polyclonal

**Trypsin-3 Polyclonal Antibody - Additional Information****Gene ID** 5646**Other Names**

PRSS3; PRSS4; TRY3; TRY4; Trypsin-3; Brain trypsinogen; Mesotrypsinogen; Serine protease 3; Serine protease 4; Trypsin III; Trypsin IV

**Dilution**

WB~~Western Blot: 1/500 - 1/2000. ELISA: 1/40000. Not yet tested in other applications.

**Format**

Liquid in PBS containing 50% glycerol, 0.5% BSA and 0.09% (W/V) sodium azide.

**Storage Conditions**

-20°C

**Trypsin-3 Polyclonal Antibody - Protein Information****Name** PRSS3**Synonyms** PRSS4, TRY3, TRY4**Function**

Digestive protease that cleaves proteins preferentially after an Arg residue and has proteolytic activity toward Kunitz-type trypsin inhibitors.

**Cellular Location**

Secreted.

**Tissue Location**

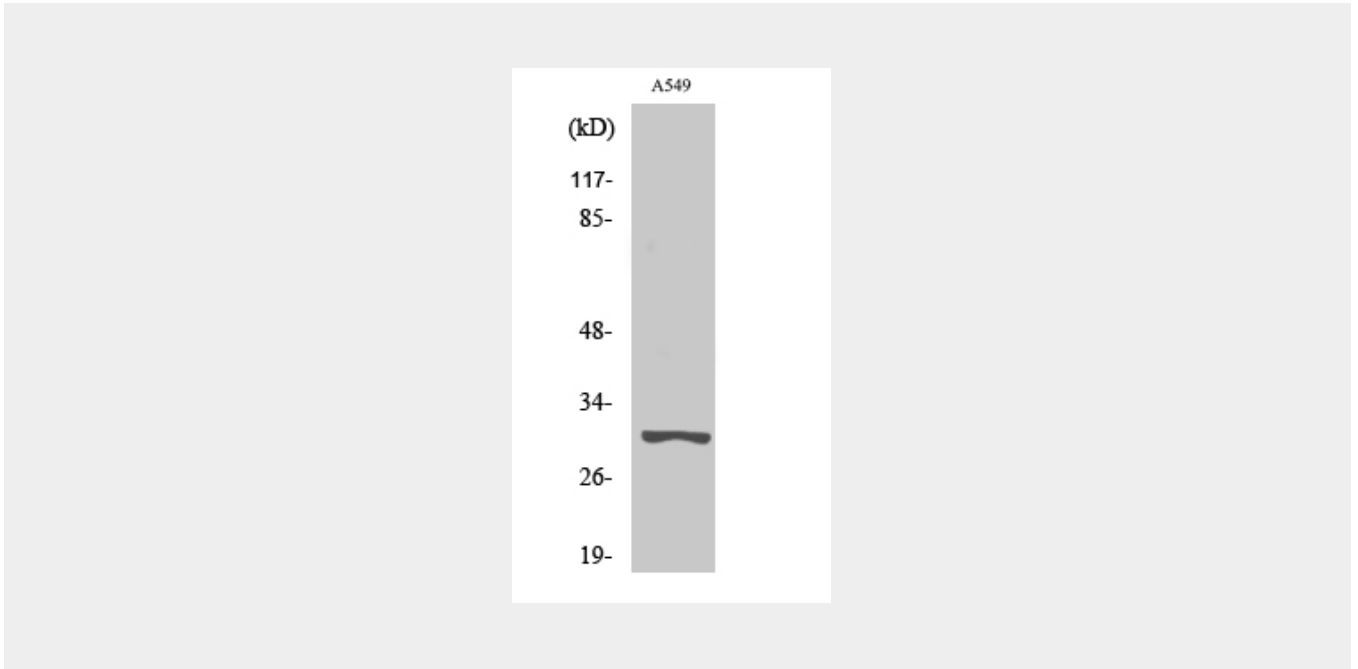
Detected in pancreas and pancreatic fluid (at protein level) (PubMed:6698368). Expressed in pancreas and brain (PubMed:8294000). Detected in ileum (PubMed:12021776)

**Trypsin-3 Polyclonal Antibody - Protocols**

Provided below are standard protocols that you may find useful for product applications.

- [Western Blot](#)
- [Blocking Peptides](#)
- [Dot Blot](#)
- [Immunohistochemistry](#)
- [Immunofluorescence](#)
- [Immunoprecipitation](#)
- [Flow Cytometry](#)
- [Cell Culture](#)

### Trypsin-3 Polyclonal Antibody - Images



### Trypsin-3 Polyclonal Antibody - Background

Digestive protease that cleaves proteins preferentially after an Arg residue and has proteolytic activity toward Kunitz- type trypsin inhibitors.