

Trypsin-1 Polyclonal Antibody
Catalog # AP72936**Specification**

Trypsin-1 Polyclonal Antibody - Product Information

Application	WB
Primary Accession	P07477
Reactivity	Human
Host	Rabbit
Clonality	Polyclonal

Trypsin-1 Polyclonal Antibody - Additional Information**Gene ID** 5644**Other Names**

PRSS1; TRP1; TRY1; TRYP1; Trypsin-1; Beta-trypsin; Cationic trypsinogen; Serine protease 1; Trypsin I

Dilution

WB~~Western Blot: 1/500 - 1/2000. ELISA: 1/10000. Not yet tested in other applications.

Format

Liquid in PBS containing 50% glycerol, 0.5% BSA and 0.09% (W/V) sodium azide.

Storage Conditions

-20°C

Trypsin-1 Polyclonal Antibody - Protein Information**Name** PRSS1 ([HGNC:9475](#))**Function**

Has activity against the synthetic substrates Boc-Phe-Ser- Arg-Mec, Boc-Leu-Thr-Arg-Mec, Boc-Gln-Ala-Arg-Mec and Boc-Val-Pro-Arg- Mec. The single-chain form is more active than the two-chain form against all of these substrates.

Cellular Location

Secreted, extracellular space.

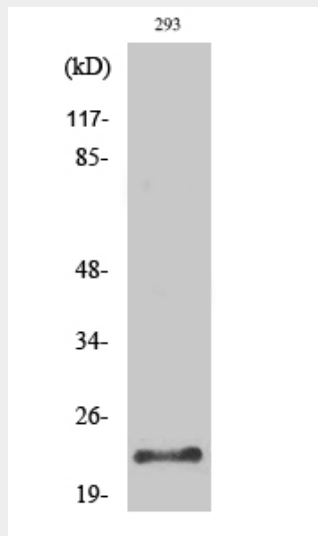
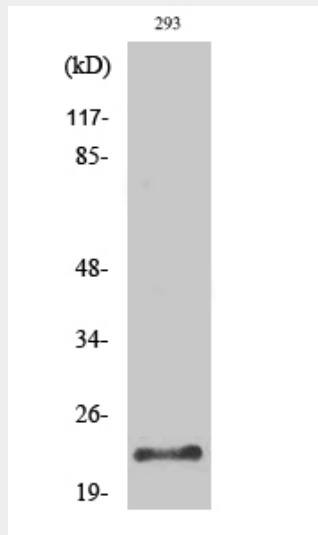
Trypsin-1 Polyclonal Antibody - Protocols

Provided below are standard protocols that you may find useful for product applications.

- [Western Blot](#)
- [Blocking Peptides](#)

- [Dot Blot](#)
- [Immunohistochemistry](#)
- [Immunofluorescence](#)
- [Immunoprecipitation](#)
- [Flow Cytometry](#)
- [Cell Culture](#)

Trypsin-1 Polyclonal Antibody - Images



Trypsin-1 Polyclonal Antibody - Background

Has activity against the synthetic substrates Boc-Phe- Ser-Arg-Mec, Boc-Leu-Thr-Arg-Mec, Boc-Gln-Ala-Arg-Mec and Boc-Val- Pro-Arg-Mec. The single-chain form is more active than the two-chain form against all of these substrates.